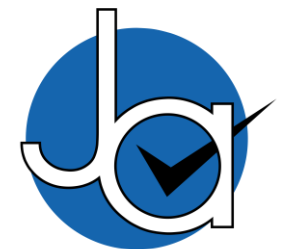




## 2 bedroom Mid Terraced House located in Harwich.

Guide Price  
£175,000 - £190,000

Find us on..



**JOHN ALEXANDER**  
ESTATE AGENTS

# Hordle Street Harwich CO12 3PZ



2



1



2



A



EPC

C



## FULL DESCRIPTION

### THE HOME

\*\*\*Guide Price £175,000 - £190,000\*\*\*

John Alexander is pleased to present this property located in Harwich. Nestled just a short stroll from the town centre, this delightful two-bedroom home is ideally positioned for those who love the sea breeze, scenic coastal walks, and the vibrant local scene.

This charming two-bedroom home is ideally located just a short stroll from Harwich town centre, offering easy access to coastal walks, local amenities, and an award-winning beach. Recently modernised throughout, the property boasts a spacious lounge, formal dining room, and a contemporary kitchen with views of the sunny courtyard garden. Upstairs, two generously sized bedrooms and a large, bright bathroom provide ample space and comfort. The low-maintenance rear garden offers a peaceful outdoor retreat, making this home the perfect blend of modern living and coastal charm.

### LIVING ROOM

(3.12M X 3.58M)

The living room of this home is a bright and inviting space, designed to make the most of its generous proportions. With large windows allowing an abundance of natural light to flood the room, the space feels airy and open.

### KITCHEN

(3.48M X 2.49M)

The kitchen in this home is a modern and functional space, designed with both style and practicality in mind. Featuring sleek cabinetry and contemporary finishes, the kitchen is well-equipped for everyday cooking and entertaining.

### DINING ROOM

(3.48M X 2.49M)

The dining room in this home is a beautifully bright and spacious area, perfect for family meals. The large windows invite natural light to fill the room, creating a warm and welcoming atmosphere throughout the day.

### HALLWAY

The hallway of this home offers a welcoming first impression with its bright and spacious feel. As you step inside, the neutral decor creates a sense of warmth and openness, providing a smooth transition from room to room.

### BEDROOM ONE

(3.48M X 2.49M)

Bedroom one is a generously sized double room, offering a peaceful retreat filled with natural light. The large window allows sunlight to pour in, creating a bright and airy atmosphere throughout the day.





## BEDROOM TWO

(11'5" X 8'2")

Bedroom two is a spacious and inviting double room, perfect for a variety of uses, whether as a guest room, home office, or personal sanctuary. The room benefits from plenty of natural light, creating a bright and welcoming space.

## BATHROOM

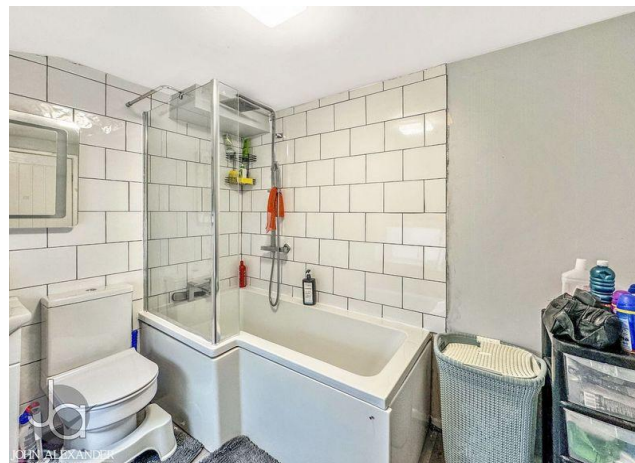
The bathroom in this home is a spacious and well-appointed retreat, offering both style and functionality. The bright, airy atmosphere is enhanced by the large window, allowing natural light to flood the space.

## COURTYARD GARDEN

The courtyard garden at this home is a private and peaceful outdoor space, perfect for enjoying the sunshine or relaxing after a long day.

## LOCATION

The home enjoys a prime location just a short stroll from the town centre. With scenic coastal walks, local shops, vibrant bars, and a variety of restaurants all within easy reach, everything you need is on your doorstep. The award-winning beach is also just moments away, offering the perfect spot to relax by the sea.



## FLOORPLAN



**Ground Floor**



**First Floor**

## DIRECTIONS

### CONTACT

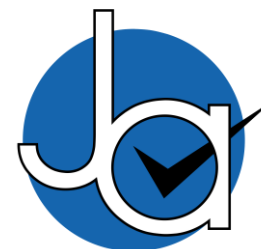
**99 London Road  
Stanway  
Colchester  
Essex  
CO3 0NY**

**E [sales@john-alexander.co.uk](mailto:sales@john-alexander.co.uk)**

**T 01206 656007**

**[www.john-alexander.co.uk](http://www.john-alexander.co.uk)**

Find us on..



**JOHN ALEXANDER**  
ESTATE AGENTS