



12 Harebell Close, Swindon

Swindon

In Excess of £535,000

m-fortune  
property.com





## 12 Harebell Close

Haydon Wick

Welcome to this spacious 4-bedroom detached house located in a sought-after cul-de-sac, offering a comfortable and convenient lifestyle. This home boasts FOUR bedrooms, perfect for a growing family or those who appreciate extra space. The property features a 4-piece bathroom for your convenience.

What sets this property apart is the self-contained one-bedroom annexe, providing versatility and potential for various living arrangements. The owners previously had it rented out for £800 per month including bills. The double garage and driveway parking ensure ample space for vehicles.

Don't miss out on this fantastic opportunity to own a home in a desirable location with plenty of space. Book your viewing today and envision the possibilities this property has to offer!

- FOUR DOUBLE BEDROOMS
- 4-PIECE BATHROOM
- SELF CONTAINED ONE BEDROOM ANNEXE
- DOUBLE GARAGE
- SOUGHT AFTER CUL-DE-SAC
- CONSERVATORY
- KITCHEN/BREAKFAST ROOM



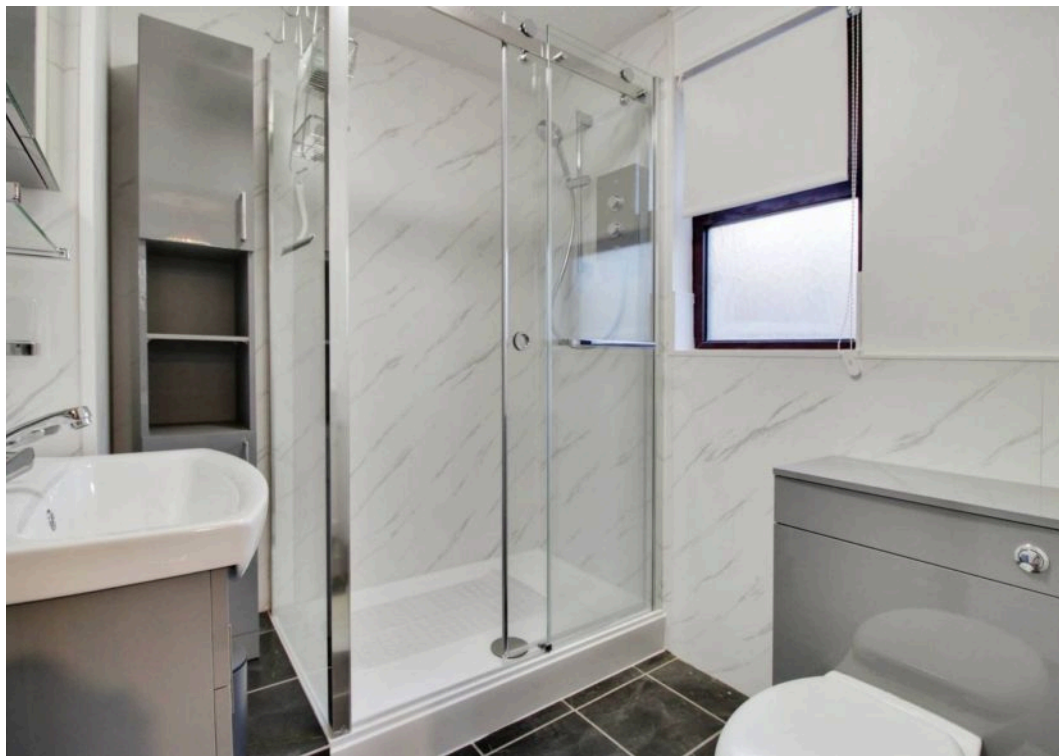


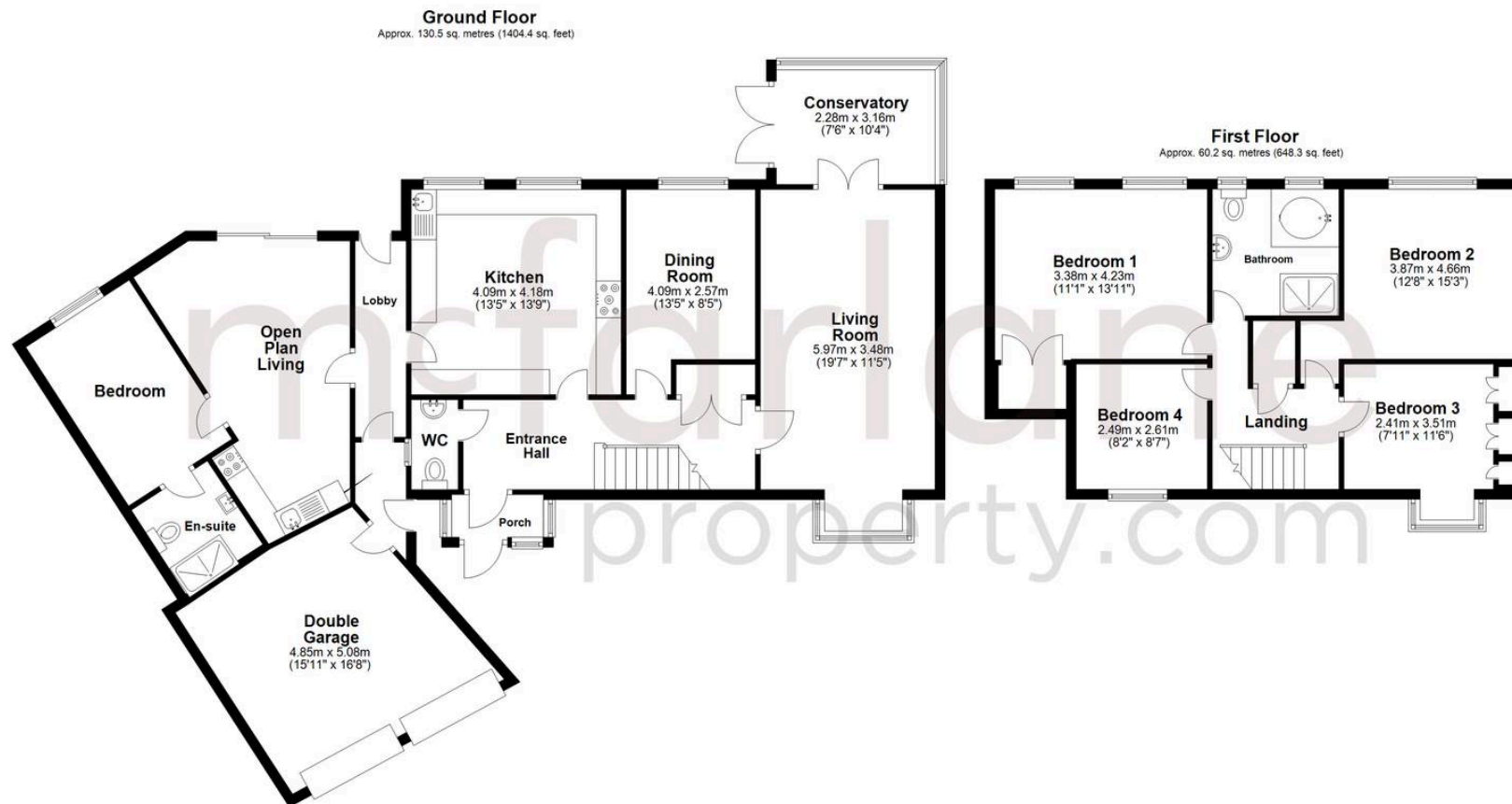












Total area: approx. 190.7 sq. metres (2052.8 sq. feet)

## McFarlane Sales & Lettings

North Swindon, Redhouse Village Centre, Swindon – SN25 2FW

01793 296600 • [swindon@mcfarlaneproperty.com](mailto:swindon@mcfarlaneproperty.com) • [www.mcfarlaneproperty.com/](http://www.mcfarlaneproperty.com/)