



Flat 1, Chestnut House Stanley Street, Swindon

Swindon

£110,000

mcfarlane

Flat 1

Chestnut House Stanley Street, Swindon

McFarlane Sales & Lettings are delighted to offer to market this well-presented one bedroom duplex maisonette, perfectly situated in the heart of Old Town. Offering excellent access to local amenities and transport links, this property features a private entrance leading to a spacious open-plan living area and kitchen. Upstairs, you'll find a generously sized double bedroom and a well appointed bathroom. An ideal opportunity for first time buyers and investors alike, this property can also be offered with a tenant in situ.





Flat 1

Chestnut House Stanley Street, Swindon

McFarlane Sales & Lettings present this well-presented duplex maisonette in the heart of Old Town, close to amenities and transport links. Featuring a private entrance, open-plan living area with kitchen, spacious double bedroom, and modern bathroom. Ideal for first-time buyers or investors, with tenant in situ.

Council Tax band: A

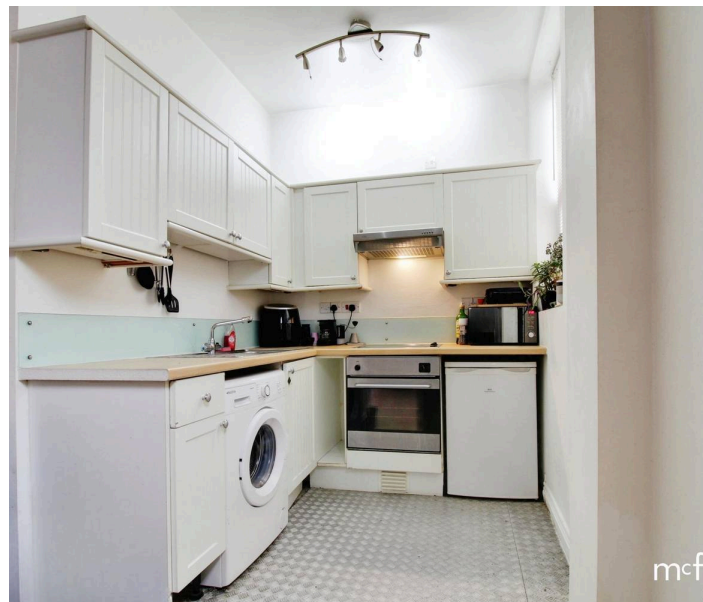
Tenure: Leasehold - 977 Years Remaining

Service Charge: £1,288.00

Ground Rent: £0

EPC Energy Efficiency Rating: D

EPC Environmental Impact Rating: E



- OLD TOWN LOCATION
- ONE BEDROOM
- DUPLEX APARTMENT
- PRIVATE ENTRANCE
- NO ONWARD CHAIN

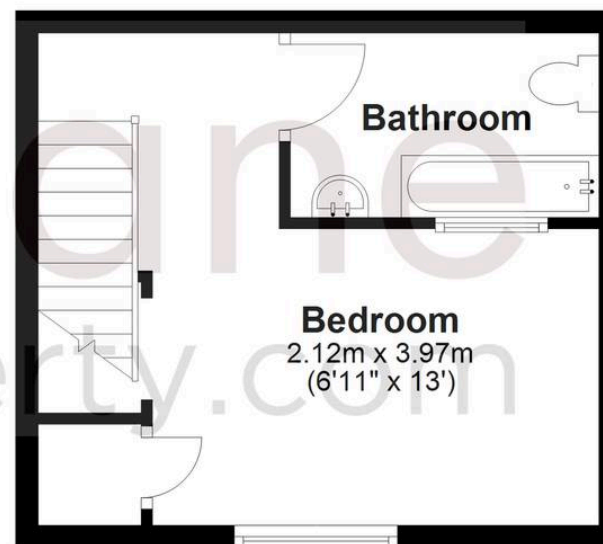
Ground Floor

Approx. 26.4 sq. metres (284.3 sq. feet)



First Floor

Approx. 21.2 sq. metres (228.3 sq. feet)



Total area: approx. 47.6 sq. metres (512.6 sq. feet)

McFarlane Sales & Lettings

McFarlane Sales & Letting Ltd, 28-30 Wood Street – SN1 4AB

01793 611841 • lettings@mcfarlaneproperty.com • www.mcfarlaneproperty.com/

mcfarlane
property.com