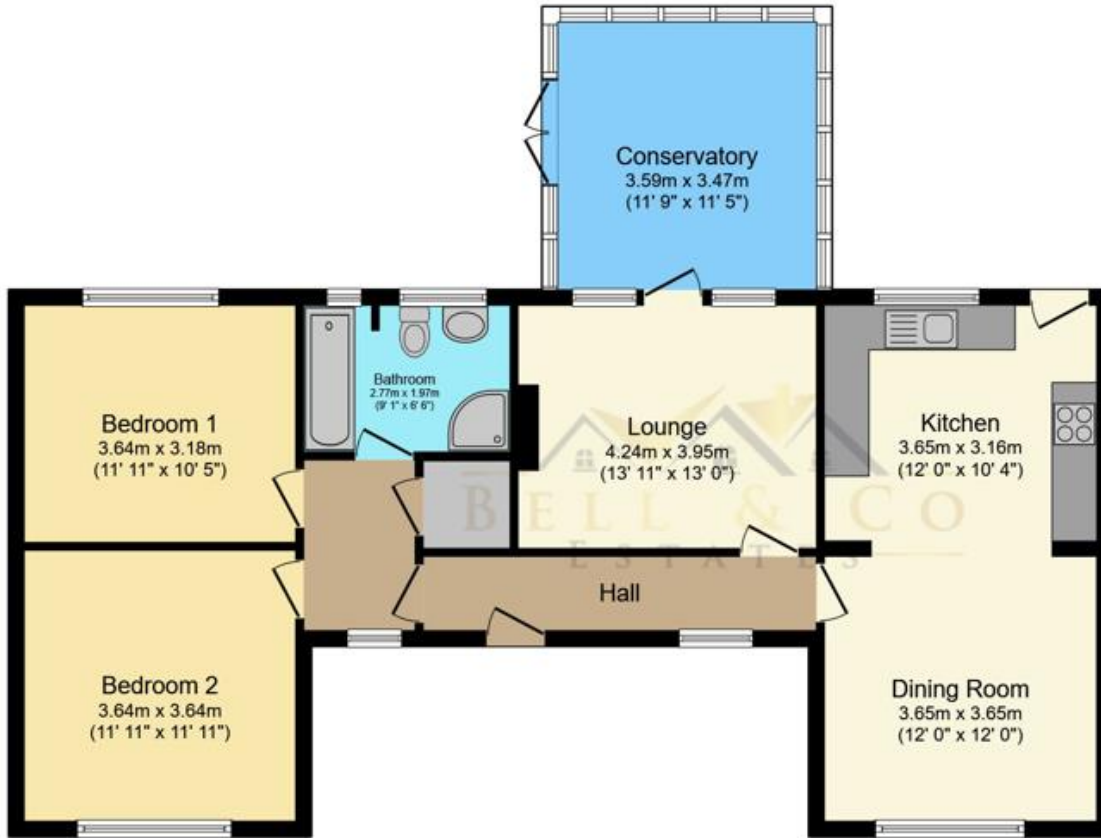




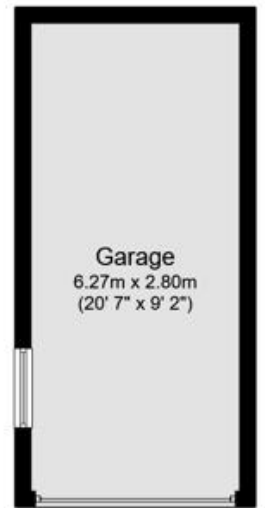
Crowgate | South Anston | Sheffield | S25 5AL

£450,000

Bell & Co Estates are delighted to present this two-bedroom detached bungalow, situated in the highly sought-after village of South Anston. Positioned on a substantial plot, this property offers huge potential to create a stunning family home. The property welcomes you with a spacious entrance hallway, offering easy access to all rooms. The large kitchen/diner is a highlight, with dual-aspect windows providing an abundance of natural light. A rear access door leads directly to the outdoor space, making it ideal for entertaining. The rear-facing lounge is a cosy space, featuring a beautiful fireplace as the centerpiece. Double doors open into the conservatory, which overlooks the private garden, creating a perfect spot to relax. The property offers two well-sized double bedrooms, along with a family bathroom, fitted with a jacuzzi bath, separate shower, WC, and sink unit. Sitting on a large plot, the bungalow benefits from ample outdoor space, with a driveway providing parking for multiple vehicles, leading to a detached garage. The side and rear gardens are generously sized, featuring grassed areas, a patio, and a shed—ideal for entertaining or future extensions. Prime Location & Development Potential. Positioned in the popular village of South Anston, this home is in a fantastic location, offering easy access to local amenities, transport links, and schools.



Floor Plan



Garage

Total floor area 111.9 m² (1,204 sq.ft.) approx

This plan is for illustration purposes only and may not be representative of the property. Plan not to scale. Powered by PropertyBox

Contact Details

79 Wales Road
Kiveton Park
Sheffield
South Yorkshire
S26 6RA

www.bellcoestates.com

03333 580590

26 Crowgate
South Anston
SHEFFIELD
S25 5AL

Energy rating

D

Valid until

18 March 2034

Certificate number

9518-3036-7207-3204-1200

Property type

Detached bungalow

Total floor area

81 square metres

Agents Note: Whilst every care has been taken to prepare these sales particulars, they are for guidance purposes only. All measurements are approximate are for general guidance purposes only and whilst every care has been taken to ensure their accuracy, they should not be relied upon and potential buyers are advised to recheck the measurements