



Belmont Cannongate Road, Hythe - CT21 5PX

Guide Price **£295,000**

Approximate Gross Internal Area = 60 sq m / 648 sq ft

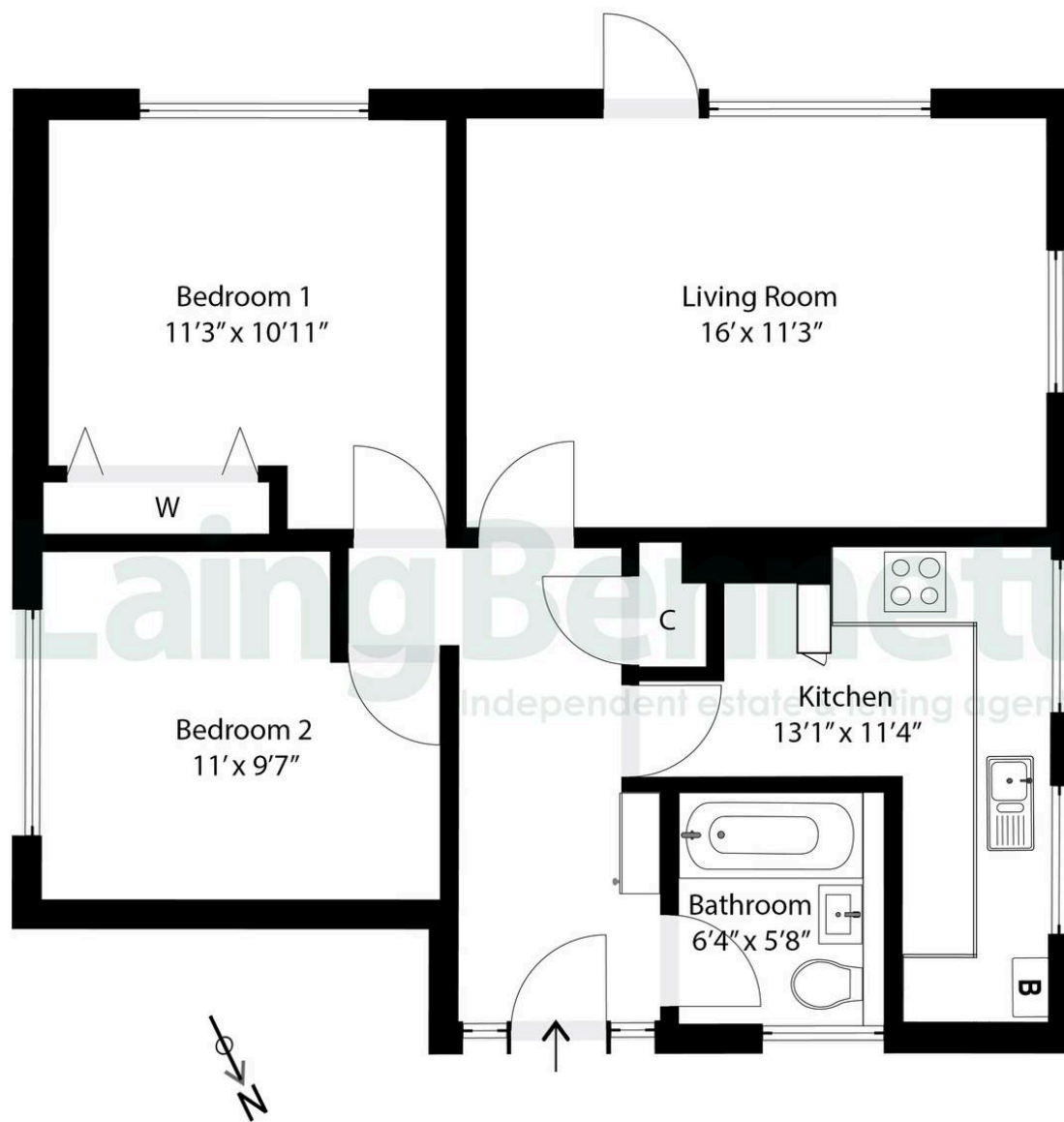


Illustration for Identification purposes only. Measurements are approximate. Dimensions given are between the widest points.

Not to scale. Outbuildings are not shown in actual location.

© Unauthorised reproduction prohibited - chriskemps@hotmail.com



Belmont Cannongate Road

Hythe, Hythe

A charming two bedroom ground floor apartment with views over Hythe and the coastline. This delightful self-contained apartment offers a perfect blend of comfort and convenience. With its own private entrance, the property welcomes you into a spacious hallway leading to a well-proportioned living/dining room. A modern kitchen, two generously sized double bedrooms, and a well-appointed bathroom. Large windows throughout the home provide an abundance of natural light and showcase stunning views of Hythe. Outside, an enclosed rear garden offers a retreat, perfect for outdoor dining or simply enjoying the surroundings. The property also benefits from off-road parking. Don't miss out—schedule a viewing today.

Council Tax band: G

Tenure: Share of Freehold

EPC Energy Efficiency Rating: C

EPC Environmental Impact Rating: C



Laing Bennett

Laing Bennett Ltd, The Estate Office, 8 Station Road – CT18 8HP

01303 863393

info@laingbennett.co.uk

www.laingbennett.co.uk/

DISCLAIMER – These details are for guidance only and do not form part of an offer or contract. Measurements are approximate. Laing Bennett Ltd and the Vendor/Landlord accept no liability. Services and appliances are untested. Applicants must make their own checks. Items shown may not be included. No staff have authority to give warranties.