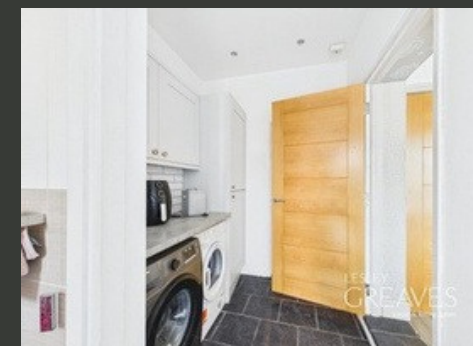




**£280,000-£290,000**

**GUIDE PRICE**

**DOVEDALE ROAD  
NOTTINGHAM**



- SEMI DETACHED
- FOUR BEDROOMS
- DINING KITCHEN
- CONSERVATORY
- DOWNSTAIRS WC
- DRIVEWAY
- EPC D



SPACIOUS FOUR BEDROOM FAMILY HOME IN BAKERSFIELD

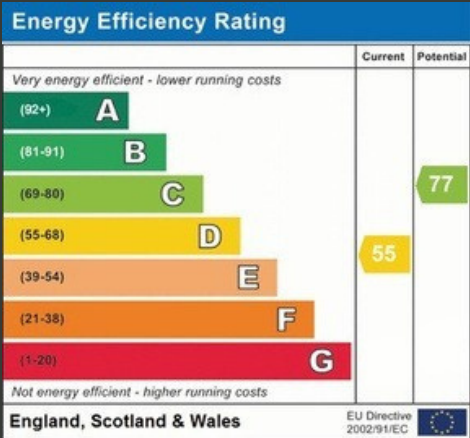
THIS SPACIOUS BAY FRONTED SEMI-DETACHED FAMILY HOME SITUATED IN THE HIGHLY SOUGHT-AFTER AREA OF BAKERSFIELD. THE LOCATION BOASTS A VARIETY OF LOCAL AMENITIES, INCLUDING SHOPS, CAFES, AND EXCELLENT TRANSPORT LINKS TO NOTTINGHAM CITY CENTRE, ENSURING CONVENIENCE AND ACCESSIBILITY FOR EVERYDAY LIVING.

UPON ENTERING THE HOME, YOU ARE GREETED BY A WELCOMING ENTRANCE HALL THAT LEADS TO THE BAY-FRONTED LIVING ROOM, WHICH RADIATES WARMTH AND CHARACTER. THE HEART OF THE HOME IS THE EXPANSIVE DINING KITCHEN, OFFERING SEAMLESS ACCESS TO THE LAUNDRY ROOM, A CONVENIENT WC, AND ADDITIONAL STORAGE SPACE PERFECTLY BALANCING STYLE WITH PRACTICALITY. DOUBLE DOORS FROM THE KITCHEN OPEN TO A SPACIOUS CONSERVATORY, WHICH LEADS OUT TO A DECKED OUTDOOR AREA, PROVIDING AN EXCELLENT SPACE FOR ENTERTAINING OR SIMPLY ENJOYING THE OUTDOORS.

THE FIRST FLOOR HOSTS FOUR WELL-PROPORTIONED BEDROOMS, EACH DESIGNED WITH COMFORT AND RELAXATION IN MIND. THESE ROOMS ARE SERVICED BY A CONTEMPORARY BATHROOM SUITE, REFLECTING THE HOME'S MODERN DESIGN AND HIGH-QUALITY FINISHES THROUGHOUT.

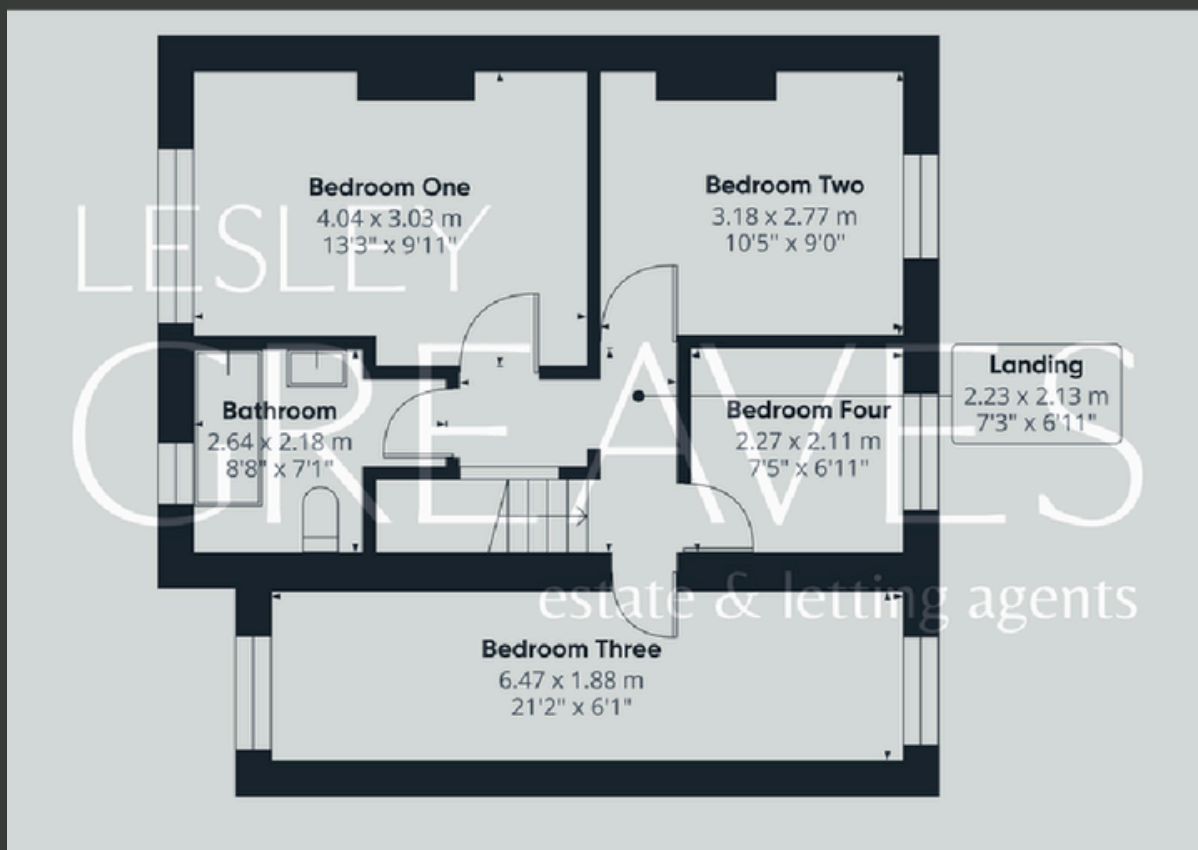
EXTERNALLY, THE PROPERTY BENEFITS FROM A PRIVATE DRIVEWAY AND GARAGE/STORAGE AT THE FRONT, WHILE THE LARGE REAR GARDEN OFFERS A PEACEFUL RETREAT. FEATURING A DECKED AREA AND A LAWN, THIS OUTDOOR SPACE PROVIDES THE PERFECT ENVIRONMENT FOR BOTH RELAXATION AND ENTERTAINMENT.

- FREEHOLD
- COUNCIL TAX; BAND B
- LOCAL AUTHORITY; NOTTINGHAM CITY COUNCIL
- MEASUREMENTS; 109 SQ METERS









## Lesley Greaves Estate & Lettings Agents

22 Main Road ,Gedling, Nottingham, NG4 3HP

0115 987 7337

[sales@lesleygreaves.co.uk](mailto:sales@lesleygreaves.co.uk)