



2 Irvine Close, Tadpole Garden Village

Swindon

In Excess of £465,000



2 Irvine Close

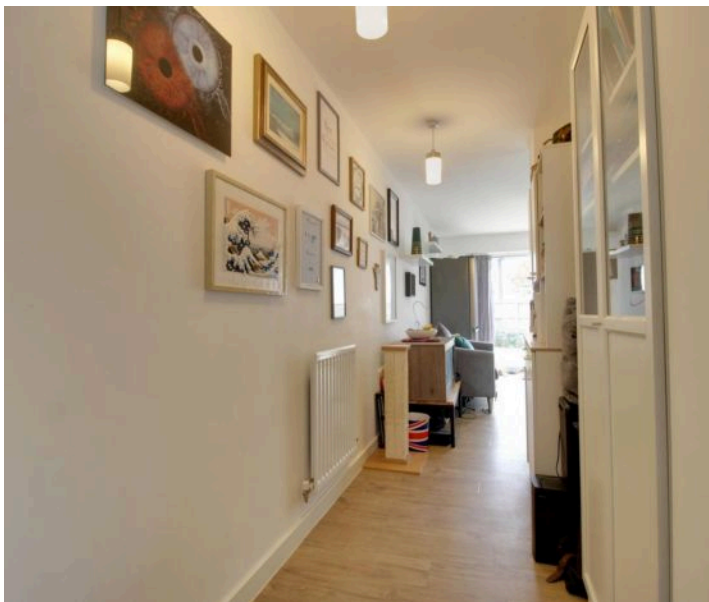
Tadpole Garden Village, Swindon

Welcome to this IMMACULATE 4 Bedroom Detached House, nestled in the highly sought-after Tadpole location. As you enter through the IMPRESSIVE GALLERY ENTRANCE, you'll appreciate the exquisite design and attention to detail throughout. The heart of the home boasts a stunning KITCHEN/DINING ROOM, perfect for entertaining and creating unforgettable moments with family and friends.

This EXECUTIVE property features a GARAGE AND DRIVEWAY, providing ample parking for your convenience. Retreat to the peaceful oasis of the GENEROUS GARDEN, offering a tranquil escape from the hustle and bustle of every-day life. The luxurious EN-SUITE in the MASTER bedroom is your private sanctuary.

With 3 DOUBLE BEDROOMS, there is plenty of space for the whole family to unwind and relax. The added convenience of a UTILITY ROOM makes every-day tasks a breeze. Don't miss this rare opportunity to own a piece of perfection in this thriving community. Experience luxury living at its finest in this exceptional property.

- GALLERY ENTRANCE
- KITCHEN/DINING ROOM
- GARAGE AND DRIVEWAY
- GENEROUS GARDEN
- EN-SUITE TO MASTER
- POPULAR TADPOLE LOCATION
- 3 DOUBLE BEDROOMS
- UTILITY ROOM



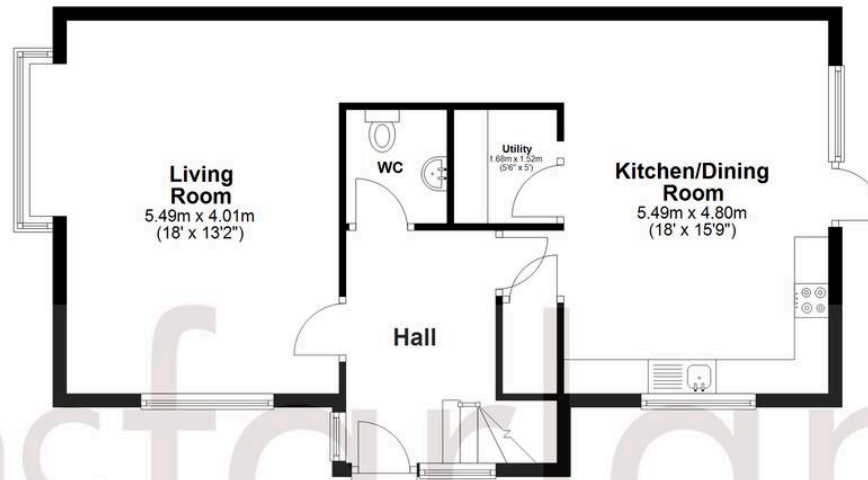






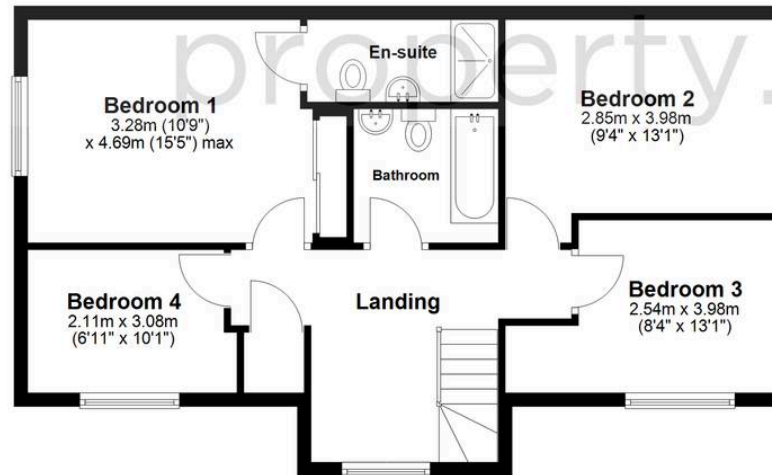
Ground Floor

Approx. 65.3 sq. metres (703.1 sq. feet)



First Floor

Approx. 63.7 sq. metres (686.0 sq. feet)



Total area: approx. 129.0 sq. metres (1389.0 sq. feet)

McFarlane Sales & Lettings

North Swindon, Redhouse Village Centre, Swindon – SN25 2FW

01793 296600 • swindon@mcfarlaneproperty.com • www.mcfarlaneproperty.com/