A photograph of a two-story stone building with a tiled roof and dormer windows, surrounded by a lush garden with a large tree and a stone planter.

Caxton Court, Grove Street, Bath BA2 6PN  
**To Rent** - £1,575 pcm





**High quality unfurnished ground floor two bedroom apartment.**

This outstanding building in Bath city centre contains some fine apartments of varying sizes on ground, first and second floors with a central atrium and walkways.





## Features

Quietly situated | Gas central heating | Well-equipped Kitchen | Residents' permit parking (available to purchase from B&NES)

## Video tour

<https://youtu.be/rUb9eOgvN3Q>

## Council Tax

Band D

Score	Energy rating	Current	Potential
92+	A		
81-91	B		
69-80	C	70 C	77 C
55-68	D		
39-54	E		
21-38	F		
1-20	G		



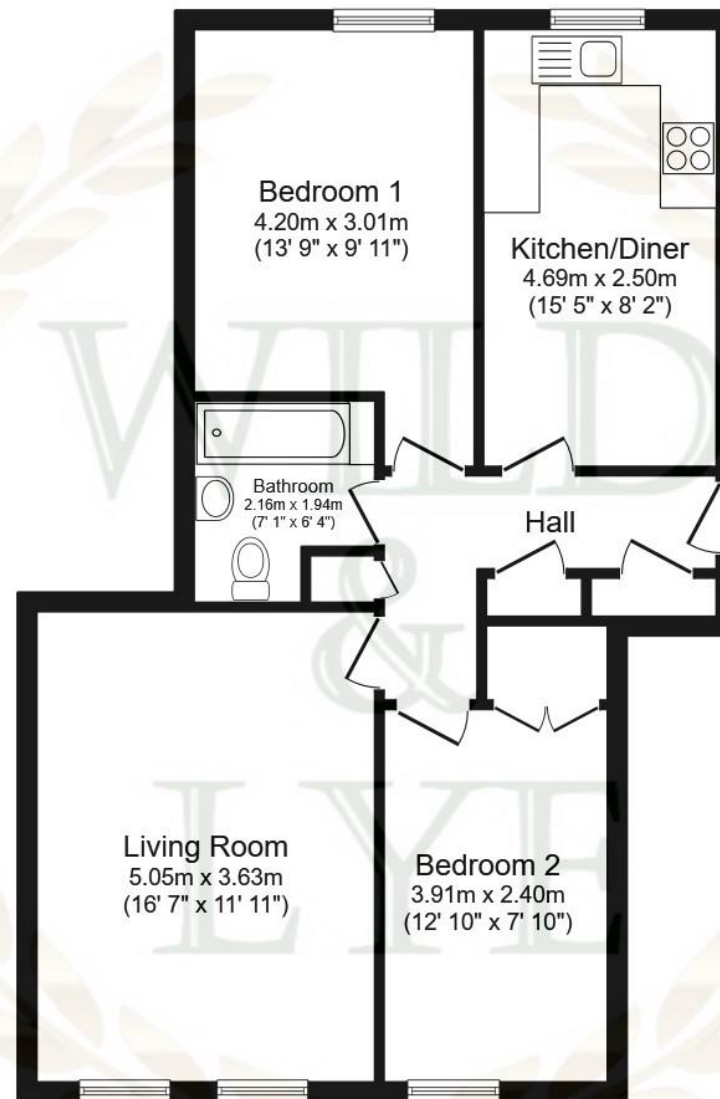
**Arrange a viewing**

01225 443322

[www.wildandlye.com](http://www.wildandlye.com)

**Important Notice** 1. Particulars:

These particulars are not an offer or contract, nor part of one. You should not rely on statements by Wild & Lye in the particulars or by word of mouth or in writing ("information") as being factually accurate about the property, its condition or its value. Neither Wild & Lye nor any joint agent has any authority to make any representations about the property, and accordingly any information given is entirely without responsibility on the part of the agents, seller(s) or lessor(s). 2. Photos etc: The photographs show only certain parts of the property as they appeared at the time they were taken. Areas, measurements and distances given are approximate only. 3. Regulations etc: Any reference to alterations to, or use of, any part of the property does not mean that any necessary planning, building regulations or other consent has been obtained. A buyer or lessee must find out by inspection or in other ways that these matters have been properly dealt with and that all information is correct.



**Ref: 2373**

Floor area 66.1 m<sup>2</sup> (711 sq.ft.)

**TOTAL: 66.1 m<sup>2</sup> (711 sq.ft.)**

This floor plan is for illustrative purposes only. It is not drawn to scale. Any measurements, floor areas (including any total floor area), openings and orientations are approximate. No details are guaranteed, they cannot be relied upon for any purpose and do not form any part of any agreement. No liability is taken for any error, omission or misstatement. A party must rely upon its own inspection(s). Powered by [www.Propertybox.io](http://www.Propertybox.io)





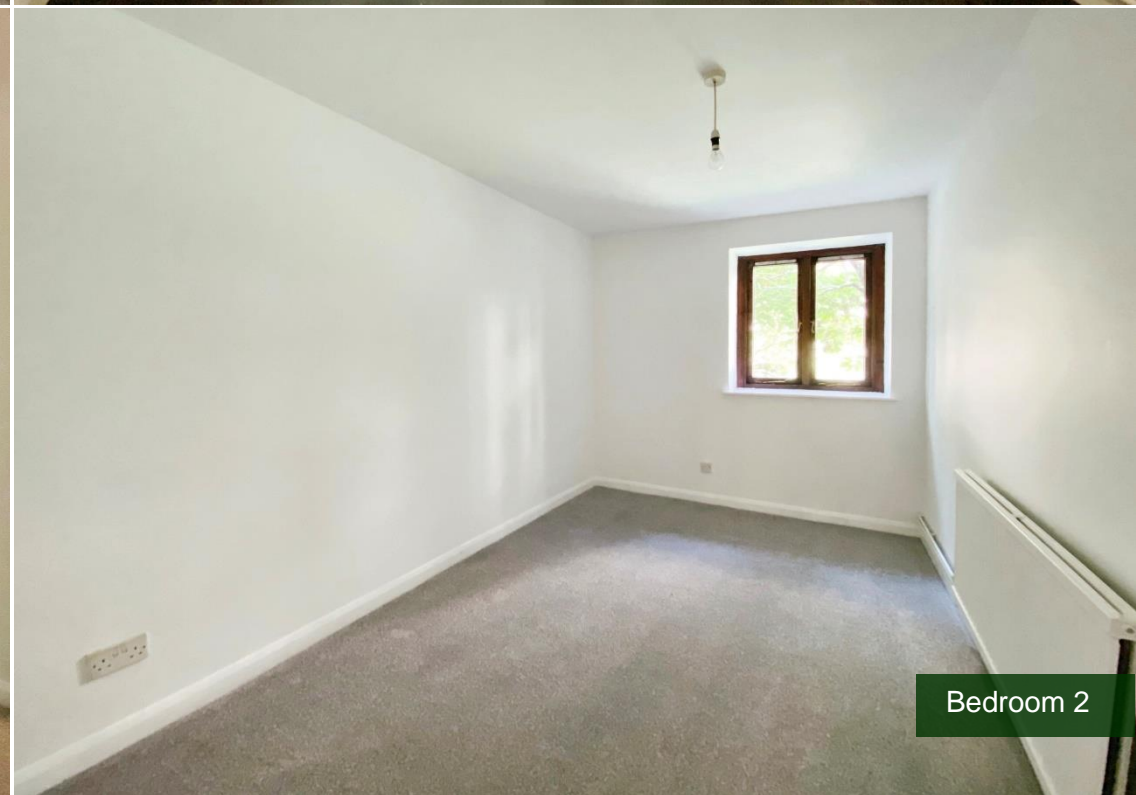
Living Room



Kitchen/Dining



Bedroom 1



Bedroom 2