



Park Wharf, Nottingham
£164,500



Comfort Estates are pleased to offer this charming one-bedroom second-floor apartment with canal views and a peaceful atmosphere. The property includes a private, secure parking space and is sold with No Upward Chain. Accessed via a secure intercom, the apartment features a light and airy lounge/dining area with patio doors leading to a private balcony overlooking the canal. The open-plan kitchen is well-equipped with an integrated oven, hob, extractor, dishwasher, space for a washing machine, and room for a fridge/freezer. The double bedroom includes built-in wardrobes and its own private balcony with canal views. The shower room has a walk-in shower, heated towel rail, low-level WC, and a vanity unit with a wash basin and mirrored cupboard. Conveniently located near Nottingham City Centre, Nottingham Train Station, and local amenities.

- Great location
- One double bedroom
- Two balconies overlooking the canal
- Open plan living space
- Walking distance to the city centre and train station
- One private allocated parking space

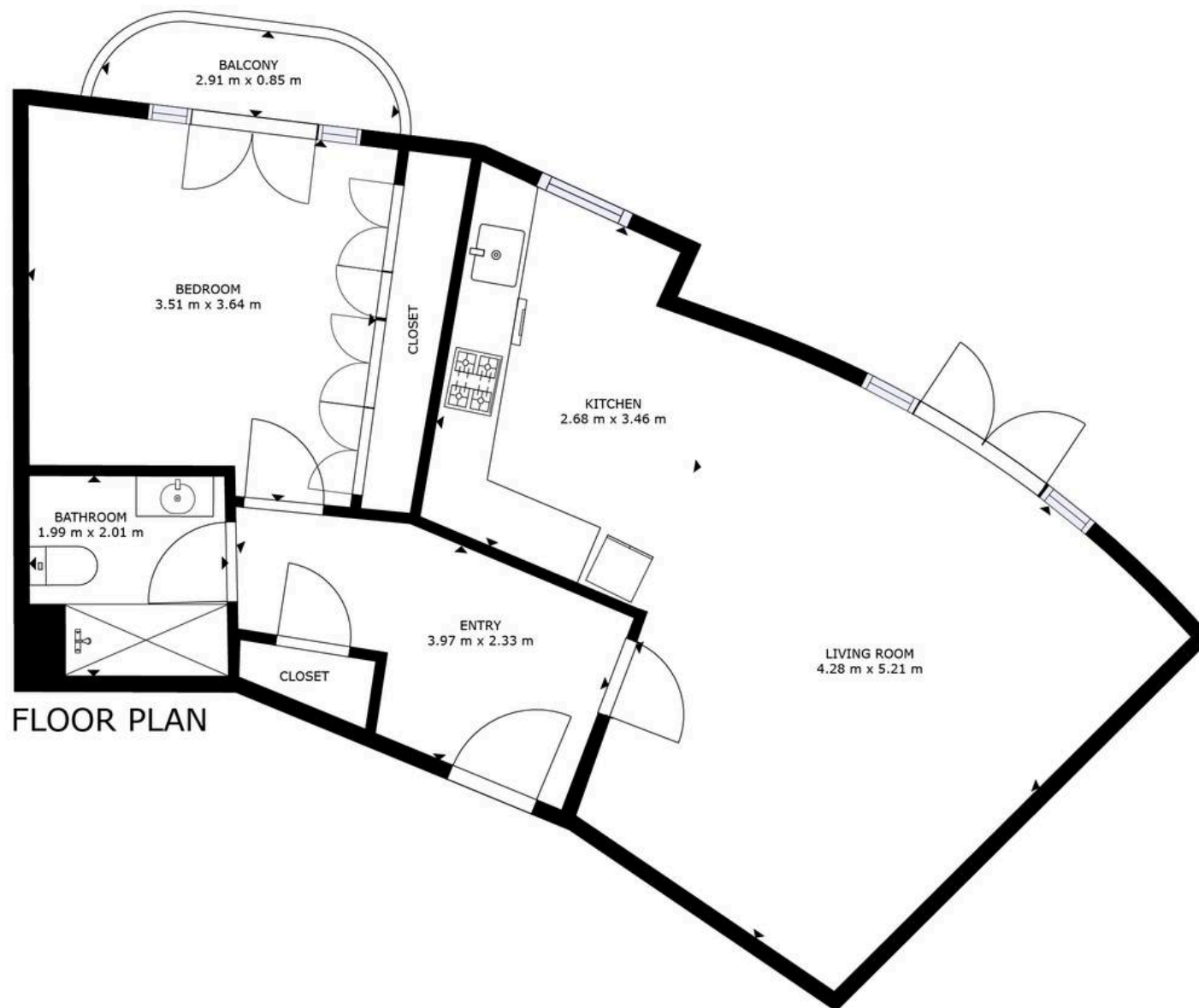


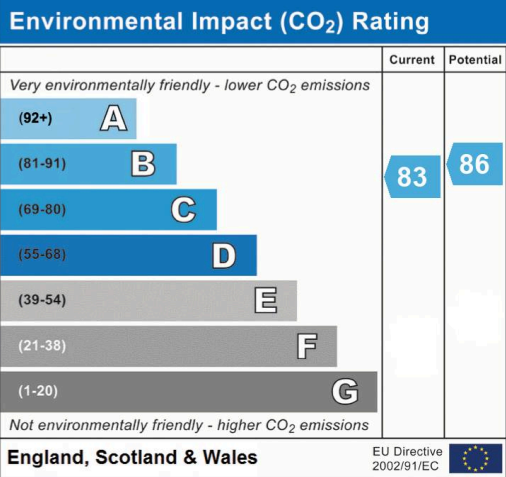
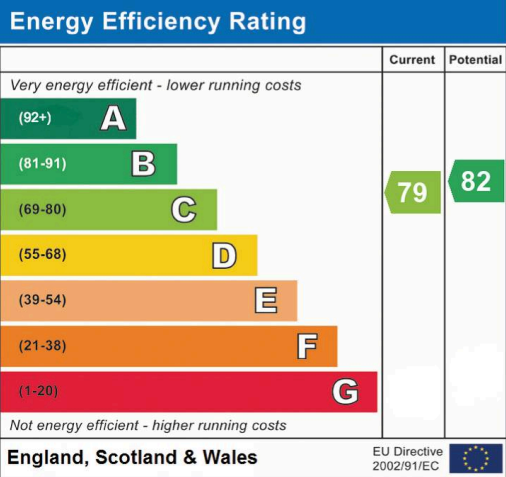


Additional Property Details;

- Council Tax Band: B
- Tenure: Leasehold
- Lease Expiry: 05/12/2126
- Ground Rent: £804.00 per year
- Service Charge: £932.60 per year









Comfort Estates

Comfort Estates, 47 Derby Road - NG1 5AW

0115 9338997 • info@comfortestates.co.uk • www.comfortestates.co.uk