



San Raphael, 10 Clos Morel, La Rue De La Fosse Au Bois, St. Ou **BROADLANDS**
£735,000

FINDING YOU A HOME SINCE 1972

San Raphael, 10 Clos Morel, La Rue De La Fosse Au Bois

St. Ouen, Jersey

- Detached home in popular St Ouen location
- Three good size bedrooms
- Fully fitted eat-in kitchen
- Large living room, plus additional conservatory
- Sunny front and rear gardens
- Garage, driveway parking for three cars plus visitor spaces
- Well presented throughout
- Great location only a short walk to St Ouen's Village
- Sole agent
- Please contact Joanna Brown on 07797887751 / joanna@broadlandsjersey.com



San Raphael, 10 Clos Morel, La Rue De La Fosse Au Bois

St. Ouen, Jersey

Nestled in the sought-after area of St Ouen is this delightful three-bedroom detached house. Boasting a prime location within close proximity to St Ouen's Village.

Upon entering the property, you are greeted by a bright and spacious interior. The accommodation comprises three generously proportioned bedrooms, ideal for a growing family. The main bedroom boasts fitted wardrobes.

There is a fully fitted eat-in kitchen, a large living room with feature fireplace, plus a spacious conservatory offering additional space - creating a seamless connection between the indoor and outdoor spaces.

The property also benefits from sunny front and rear gardens with built in borders, providing a tranquil setting for outdoor activities and al fresco dining.

Completing the appeal of this property is a garage, along with driveway parking for three cars and additional visitor spaces.





Living

Fully fitted eat-in kitchen with space for dining. Good size living room with feature fireplace. Additional conservatory opening onto the garden.

Sleeping

Three spacious bedrooms, one with fitted wardrobes. Fully tiled house bathroom, plus additional downstairs cloakroom.

Outside

Sunny and fully enclosed front and rear gardens, with planted borders. Single garage plus driveway parking for three cars.

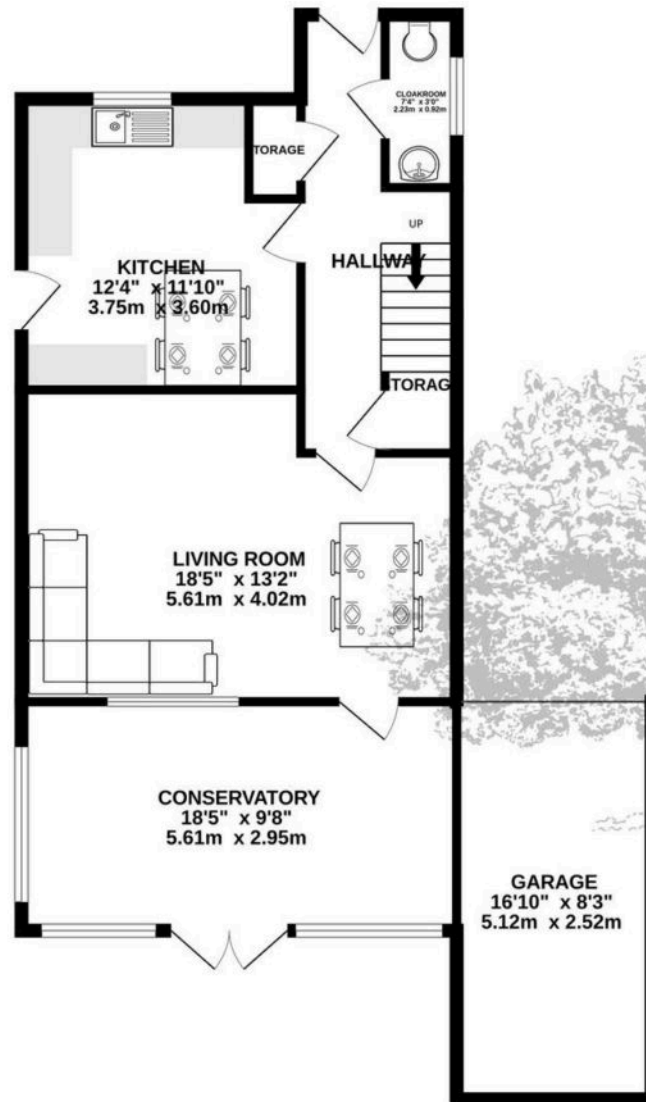
Services

Fully double glazed. Electric heating.

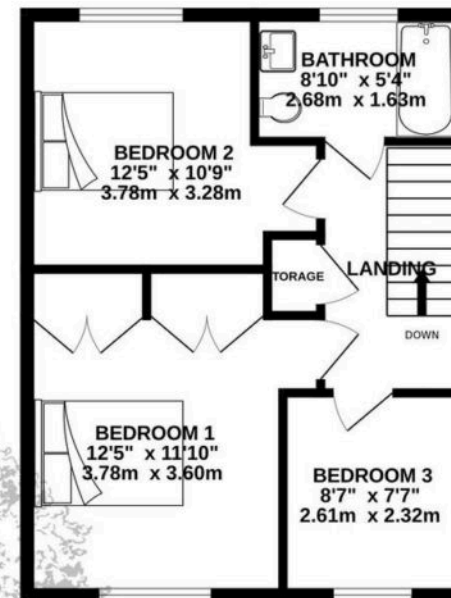




GROUND FLOOR
810 sq.ft. (75.3 sq.m.) approx.



1ST FLOOR
452 sq.ft. (42.0 sq.m.) approx.



TOTAL FLOOR AREA : 1262 sq.ft. (117.2 sq.m.) approx.

Whilst every attempt has been made to ensure the accuracy of the floorplan contained here, measurements of doors, windows, rooms and any other items are approximate and no responsibility is taken for any error, omission or mis-statement. This plan is for illustrative purposes only and should be used as such by any prospective purchaser. The services, systems and appliances shown have not been tested and no guarantee as to their operability or efficiency can be given.
Made with Metropix ©2025



FINDING YOU A HOME
SINCE 1972
B

Broadlands

Broadlands Estates, Library Place - JE2 3NL

01534 880770 • enquiries@broadlandsjersey.com • www.broadlandsjersey.com/

BROADLANDS

FINDING YOU A HOME SINCE 1972