



Flat 7, 114A Bromley Road, Beckenham

Beckenham

Guide Price £450,000





## Flat 7

114A Bromley Road, Beckenham

Guide Price £450,000 - £475,000

Modern and contemporary two bedroom two bathroom second floor apartment with private south facing balcony and allocated underground parking available for purchase chain free.

Built by Hilleard Developers in 2005, recently renovated throughout, with a new fully fitted kitchen, bathrooms and new boiler. The property is situated ideally for the vast array of cafes, restaurants, bars and leisure facilities of Beckenham, as well as the popular green open spaces of Kelsey Park. Transport links are close at hand with services into central London and Kent from Beckenham, New Beckenham, and Shortlands rail stations, and there are frequent Tram services to Croydon, Addington and Wimbledon as well as day and night bus services.

The lounge benefits from new flooring and doors open onto a tiled private south-facing balcony which overlooks the communal gardens to the rear.

This is a must see property, please contact 020 7231 5050 to reserve a viewing time.

### DISCLAIMER

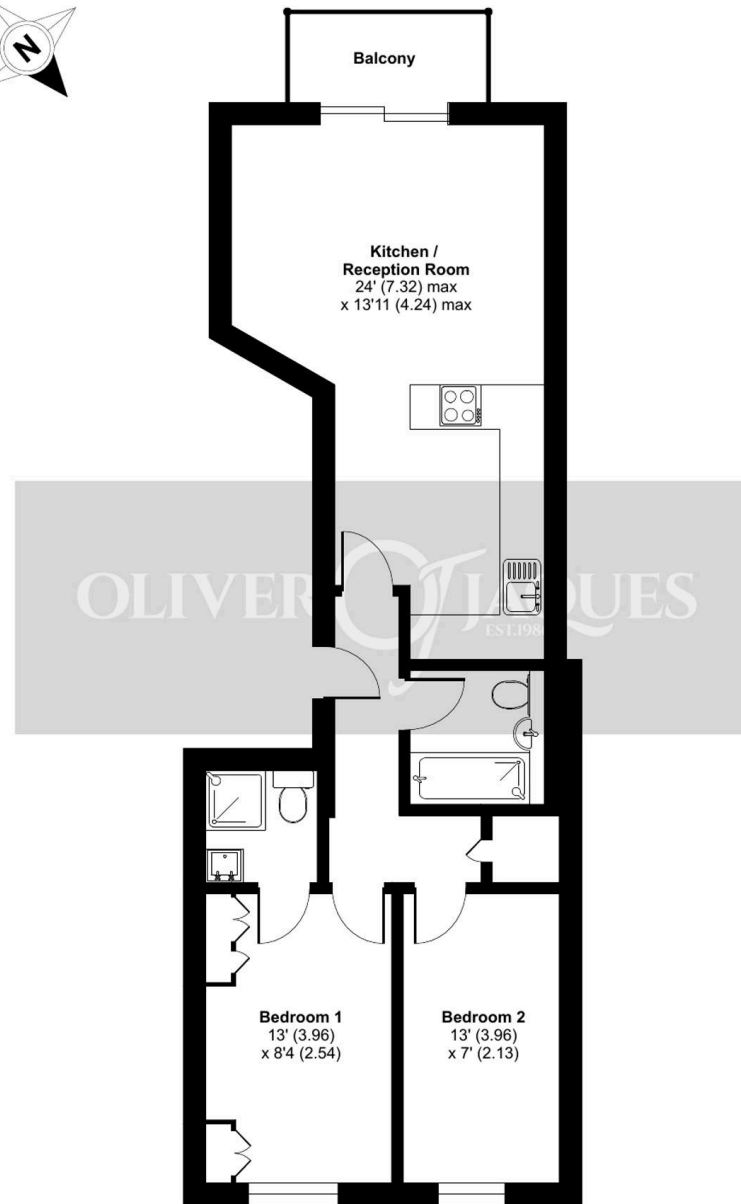
In accordance with Section 21 of the Estate Agent Act 1979, we declare there is a personal interest in the selling of this property, by a connected person to Oliver Jaques.

Council Tax band: D

# Bromley Road, Beckenham, BR3

Approximate Area = 616 sq ft / 57.2 sq m

For identification only - Not to scale



THIRD FLOOR



Floor plan produced in accordance with RICS Property Measurement 2nd Edition, Incorporating International Property Measurement Standards (IPMS2 Residential). © n/checom 2025. Produced for Oliver Jaques. REF: 1248910





## Oliver Jaques

Oliver Jaques, 229-231 Lower Road - SE16 2LW

02072315050 • southeast@o-j.co.uk • o-j.co.uk/

Every care has been taken with the preparation of this brochure but it is for general guidance and complete accuracy can't be guaranteed. Prospective purchasers should seek clarification from their solicitor. The mention of any appliances fixtures or fittings does not imply they are in working order.