



35 Pound Farm Drive, Lowestoft

Lowestoft



Guide Price £200,000
Minors & Brady

35 Pound Farm Drive

Lowestoft, Lowestoft

Guide price £200,000-£210,000 Sitting on a large corner plot in the coastal town of Lowestoft, is this semi-detached bungalow that has the potential to extend (stpp). Highlighting a spacious sitting room, a kitchen flowing into a dining room, a large conservatory, two double bedrooms and a shower room. Externally, you will find an extensive garden, a driveway and a detached garage for storage options. Don't miss the chance to acquire this home and experience all it has to offer.

- GUIDE PRICE £200,000-£210,000
- Chain free
- Semi-detached bungalow situated on a large corner plot, in the coastal town of Lowestoft
- Potential to extend (stpp)
- Spacious sitting room filled with an abundance of natural light, inviting relaxation and entertaining
- Kitchen ready for your own personalisation, flowing into a dining room
- Conservatory that extends the reception space, allowing you to enjoy the outdoors from the comfort of your home
- Two double bedrooms and a shower room
- Extensive garden offering endless possibilities for outdoor activities and enjoyment, fully enclosed for privacy
- Driveway providing off-road parking and a detached garage for storage options



M&B



M&B

35 Pound Farm Drive

Lowestoft, Lowestoft

Council Tax band: B

Tenure: Freehold

EPC Energy Efficiency Rating: E

EPC Environmental Impact Rating:



M&B

35 Pound Farm Drive

Lowestoft, Lowestoft

Pound Farm Drive

Upon entering, you are greeted by a spacious sitting room filled with an abundance of natural light, inviting relaxation and entertaining. The well-appointed kitchen, awaiting your personal touch, seamlessly transitions into a dining room, offering a perfect space for family meals and gatherings. A highlight of the home is the large conservatory that extends the reception space, allowing you to enjoy the outdoors within the comfort of your own home.

The bungalow features two double bedrooms, each thoughtfully designed to offer relaxation and privacy. Completing the accommodation is a shower room, comprising of a three piece suite, including a hand basin, a toilet and a walk-in shower cubicle.

Towards the rear is an extensive garden, offering endless possibilities for outdoor activities and enjoyment. Sectioned into shingled and laid to lawn areas, with plenty of space for a timber storage shed, a summerhouse or a greenhouse. Whether you enjoy gardening, hosting summer bbqs with loved ones, or simply relaxing in the afternoon sunshine, this enclosed garden is perfect for all. At the front of the residence is well-kept gardens, with a driveway providing ample off-road parking and a garage for storage options.

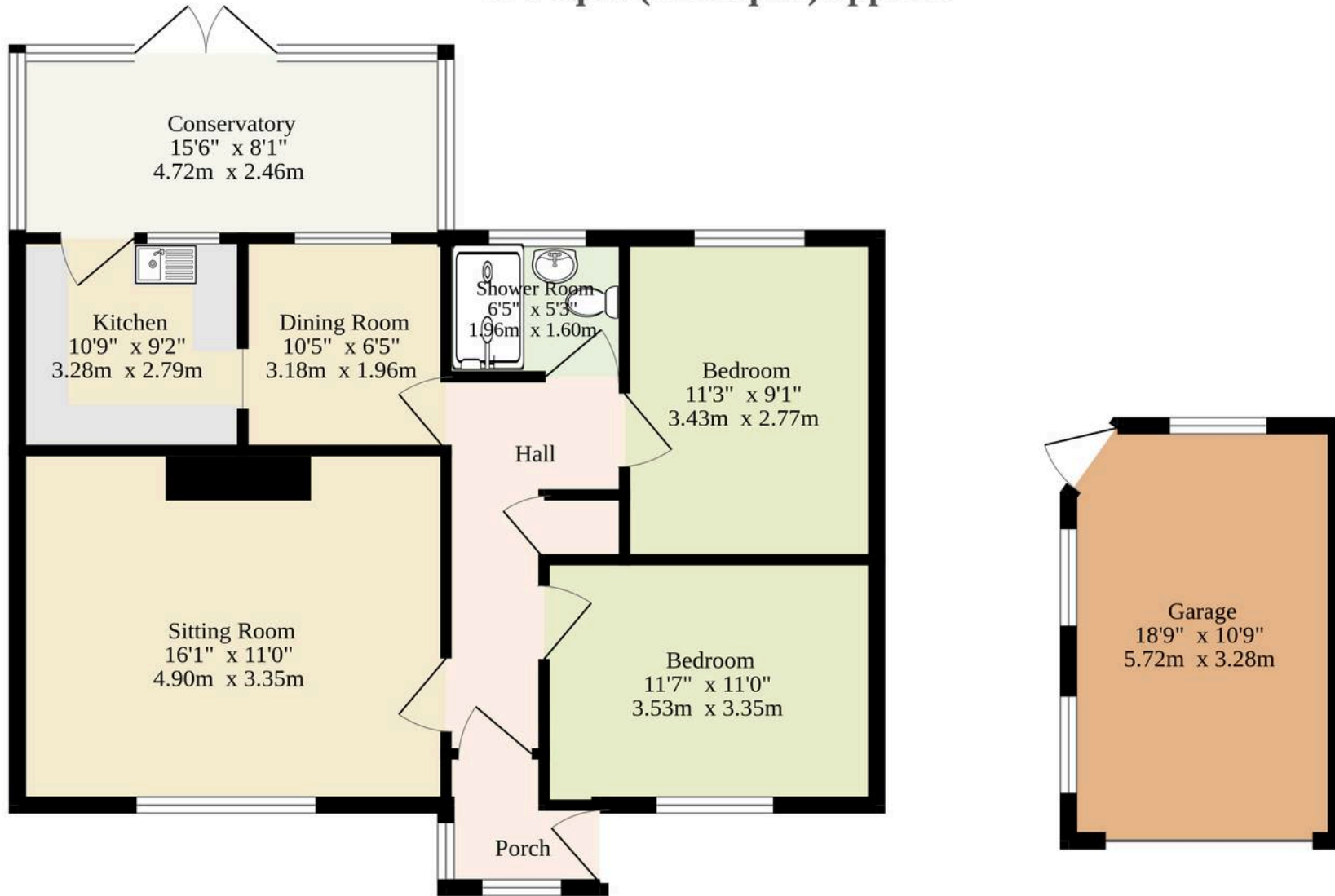
Agents notes

We understand that this property is freehold.
Connected to mains water, electricity, gas and drainage.
Heating system - Gas central heating.
Council tax band: B

Guide price £200,000-£210,000 Sitting on a large corner plot in the coastal town of Lowestoft, is this semi-detached bungalow that has the potential to extend (stpp). Highlighting a spacious sitting room, kitchen, dining room, living room, and a large conservatory.



Ground Floor
970 sq.ft. (90.1 sq.m.) approx.



Sqft Includes The Garage

TOTAL FLOOR AREA : 970 sq.ft. (90.1 sq.m.) approx.

Whilst every attempt has been made to ensure the accuracy of the floorplan contained here, measurements of doors, windows, rooms and any other items are approximate and no responsibility is taken for any error, omission or mis-statement. This plan is for illustrative purposes only and should be used as such by any prospective purchaser. The services, systems and appliances shown have not been tested and no guarantee as to their operability or efficiency can be given.
Made with Metropix ©2025

Dreaming of this home?
Let's make it a *reality*



Meet *Macey*
Branch Manager



Meet *Bradley*
Property Valuer



Meet *Ollee*
Senior Property Consultant

Minors & Brady
Your home, our market



oultonbroad@minorsandbrady.co.uk



01502 447788



Ivy Lane, Oulton Broad, NR33 8QH

CAISTER-ON-SEA | DEREHAM | DISS | NORWICH | OULTON BROAD | WROXHAM



How can we support

- ✓ Residential Mortgages
- ✓ Protection & Insurance
- ✓ Buy-to-let (personal and limited company)



Matt Waters
Senior Mortgage
and Protection Advisor



Victoria Payne
Mortgage and
Protection Advisor

Scan to book your
appointment today



T: 01692 531372
E: enquiries@norfolk-mortgages.co.uk