



School House Bossingham Road, Stelling Minnis - CT4 6DU

Guide Price £750,000 | £2,250 pcm

Approximate Gross Internal Area = 157 sq m / 1694 sq ft
Garage = 20 sq m / 212 sq ft
Garden Storage = 11 sq m / 117 sq ft

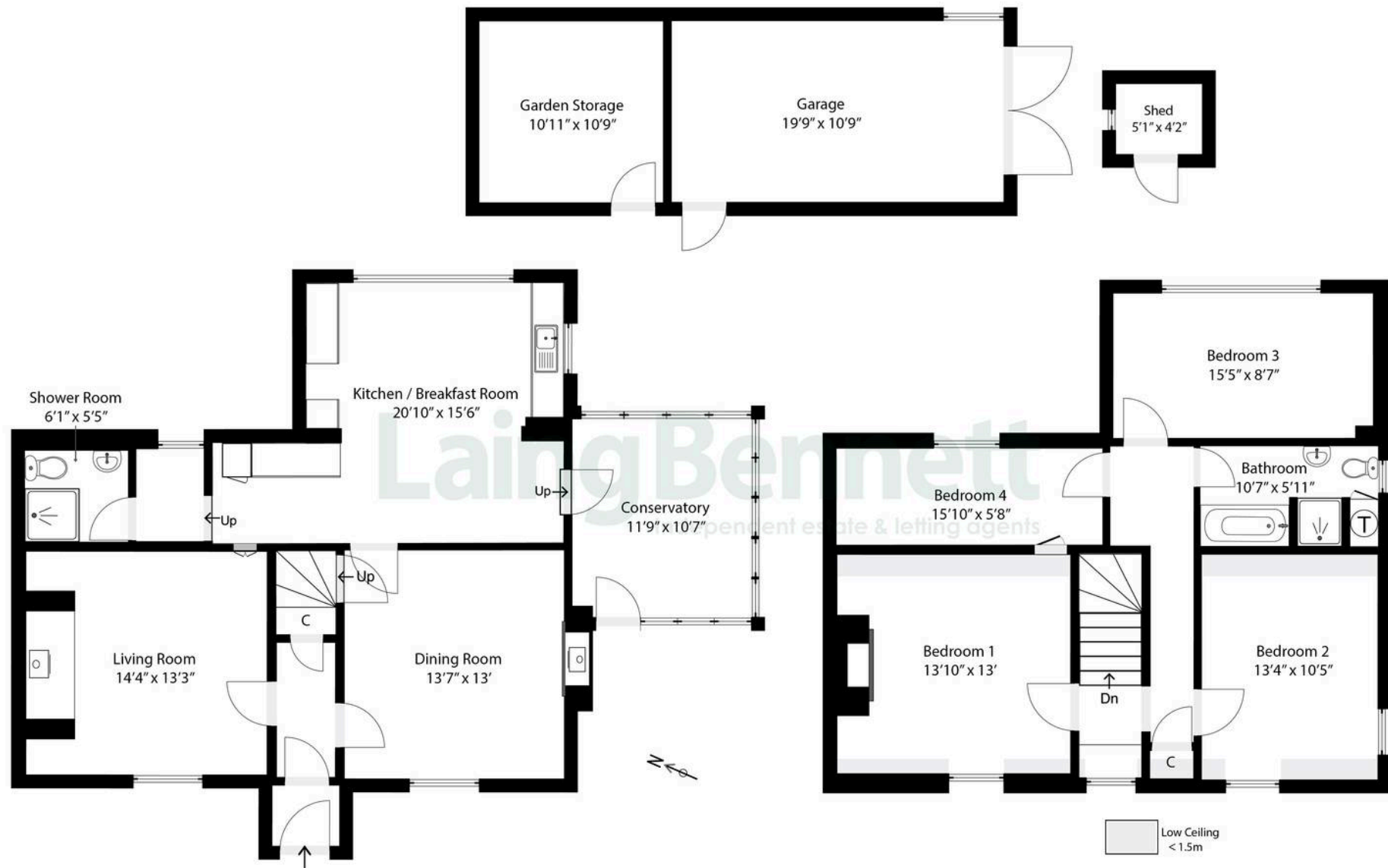


Illustration for Identification purposes only. Measurements are approximate. Dimensions given are between the widest points.

Not to scale. Outbuildings are not shown in actual location.

© Unauthorised reproduction prohibited - chriskemps@hotmail.com



School House Bossingham Road

Stelling Minnis, Canterbury

Price Range (£750,000 - £775,000) This charming and bright four-bedroom home offers a perfect blend of comfort and character. With inglenook fireplaces and exposed timbers, it exudes timeless appeal. Dating back to the 1700's, this unlisted property is full of history and intrigue, having once served as the village schoolhouse. In recent years, it has been transformed into an ideal family home, perfect for those seeking to live the quintessential village lifestyle. Set within beautifully enclosed, mature gardens of approximately 0.4 of acre, the property also features a spacious garage/workshop and ample off-road parking. No Chain.

Council Tax band: G

Tenure: Freehold

EPC Energy Efficiency Rating: E

EPC Environmental Impact Rating: F











Laing Bennett

Laing Bennett Ltd, The Estate Office, 8 Station Road – CT18 8HP

01303 863393 • info@laingbennett.co.uk • www.laingbennett.co.uk/

DISCLAIMER – These details are for guidance only and do not form part of an offer or contract. Measurements are approximate. Laing Bennett Ltd and the Vendor/Landlord accept no liability. Services and appliances are untested. Applicants must make their own checks. Items shown may not be included. No staff have authority to give warranties.