



Scholars Avenue

Salford



In Excess of **£350,000**

Scholars Avenue

Salford

****STUNNING, Modern Three Bedroom Detached Property – On a Quiet Plot on a Popular Estate! Featuring a Contemporary Kitchen Diner and a Driveway that Provides Off-Road Parking for Multiple Cars!****

Council Tax band: C

Tenure: Leasehold

- Stunning Modern Three Bedroom Detached Property
- Located on Quiet Plot on a Popular Residential State
- Spacious Family Lounge
- Contemporary Kitchen Diner with Patio Doors to the Side
- Benefits from a Downstairs W/C
- Three Well-Proportioned Bedrooms, with an Ensuite to the Main Bedroom
- Stylish Three-Piece Family Bathroom
- Driveway to the Front Providing Off-Road Parking for Multiple Cars
- Well-Presented Garden to the Side
- Close to Buile Hill Park, Salford Royal Hospital and Local Schooling



HILLS



Entrance Hallway

Complete with two ceiling light points, wall mounted radiator and laminate flooring.

Lounge

18' 3" x 10' 2" (5.57m x 3.11m)

Complete with two ceiling light points, two double glazed windows and two wall mounted radiators. Fitted with carpet flooring.

Kitchen / Diner

18' 3" x 8' 11" (5.55m x 2.72m)

Featuring complementary fitted units with integral hob and oven, dishwasher and washing machine. Complete with ceiling spotlights, double glazed window, patio doors and wall mounted radiator. Fitted with laminate flooring.

Downstairs W.C.

6' 0" x 3' 11" (1.82m x 1.19m)

Featuring a two piece suite including a hand wash basin and W.C. Complete with a ceiling light point, double glazed window and wall mounted radiator. Fitted with laminate flooring.

Landing

Complete with a ceiling light point, double glazed window and carpet flooring.

Bedroom One

13' 2" x 10' 5" (4.01m x 3.17m)

Complete with a ceiling light point, double glazed window and wall mounted radiator. Fitted with carpet flooring.

En suite

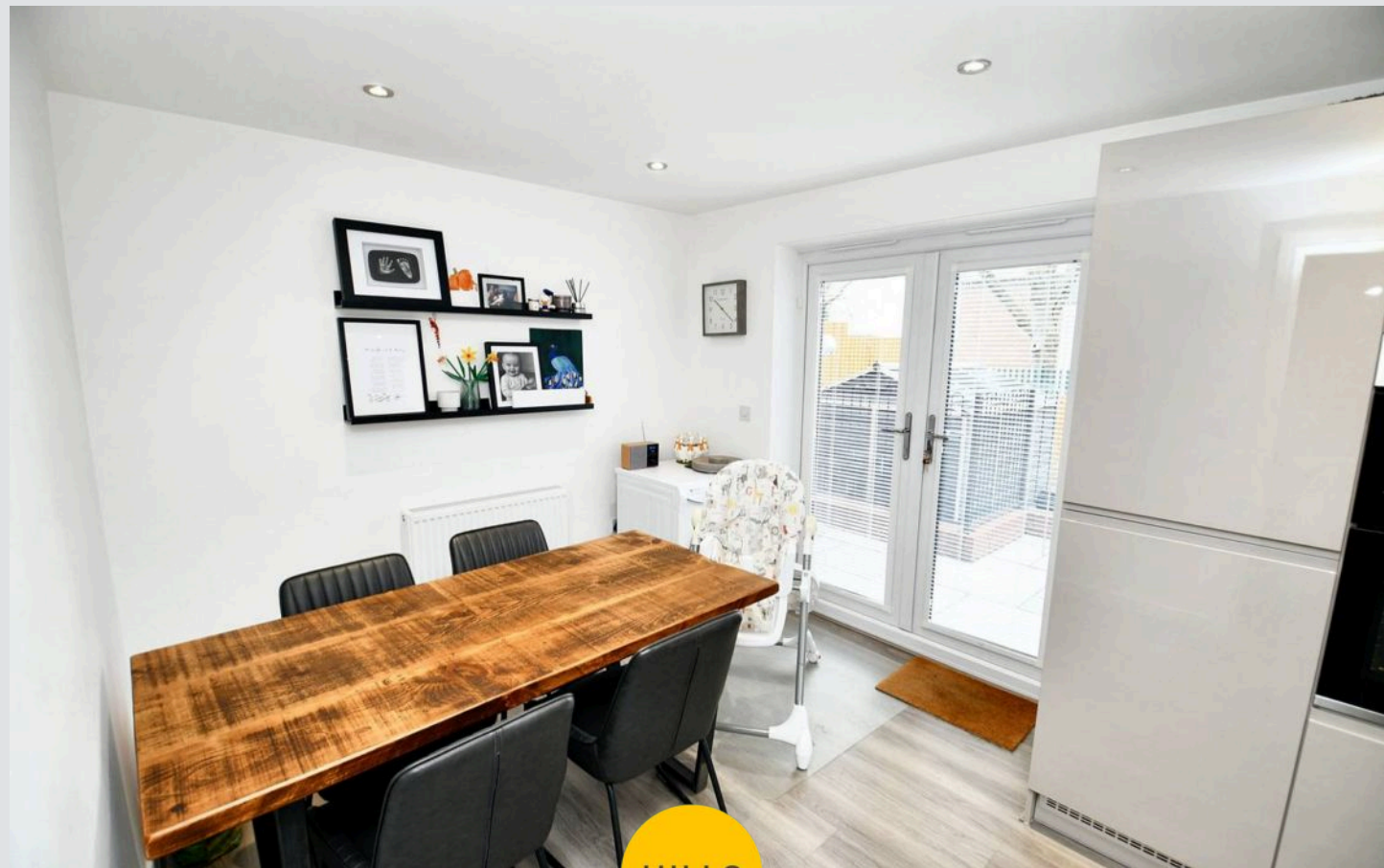
8' 10" x 4' 10" (2.69m x 1.47m)

Featuring a three piece suite including shower, hand wash basin and W.C. Complete with ceiling spotlights and double glazed window.

Bedroom Two

11' 4" x 9' 2" (3.45m x 2.79m)

Complete with a ceiling light point, double glazed window and wall mounted radiator. Fitted with carpet flooring.



Bedroom Three

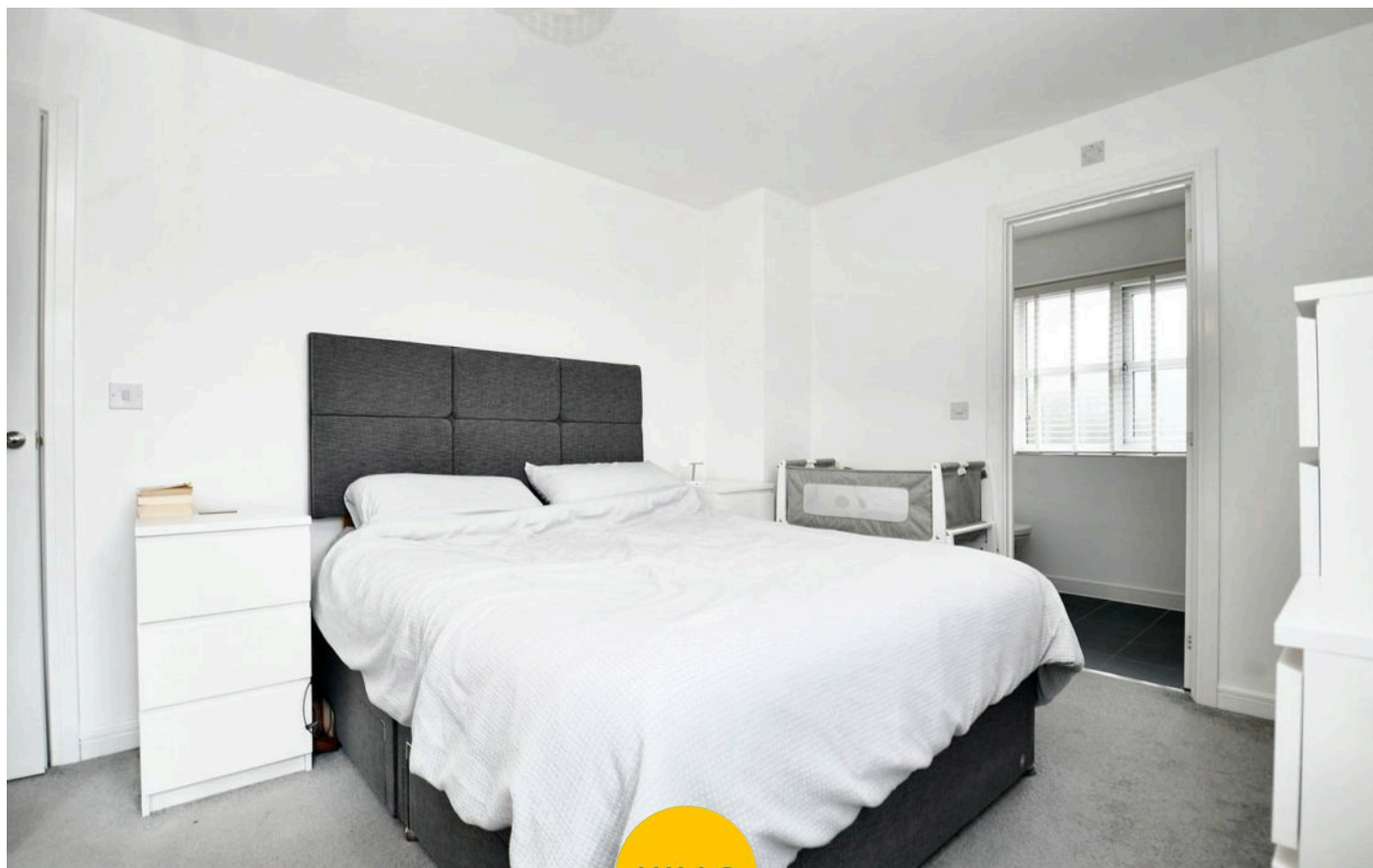
9' 1" x 6' 8" (2.78m x 2.03m)

Complete with a ceiling light point, double glazed window and wall mounted radiator. Fitted with carpet flooring.

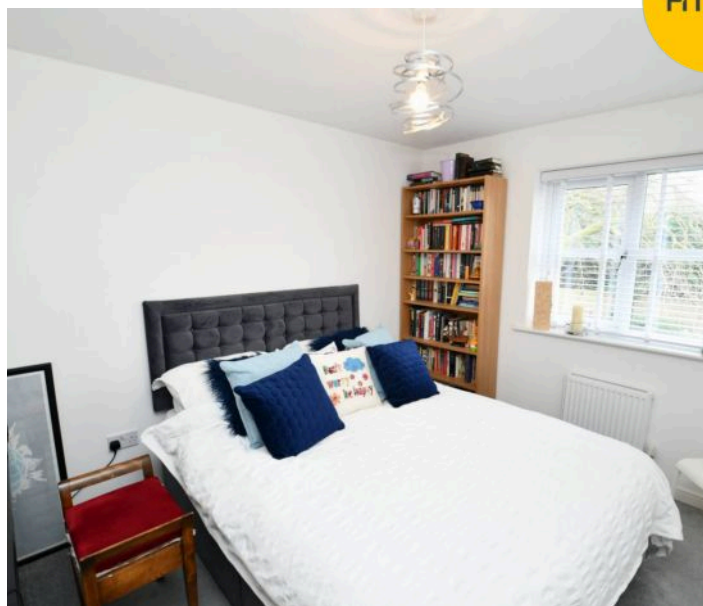
Bathroom

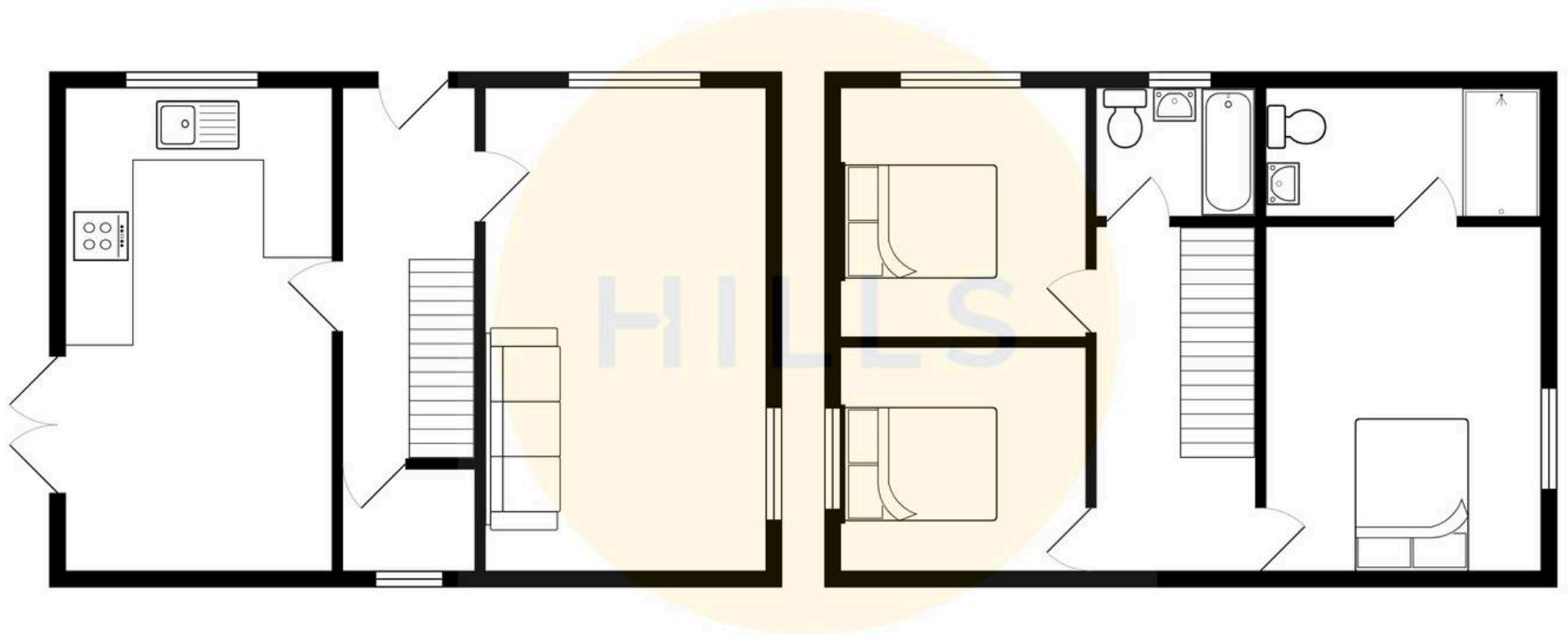
7' 6" x 5' 7" (2.28m x 1.69m)

Featuring a three piece suite including bath with shower over, hand wash basin and W.C. Complete with ceiling spotlights, window and part tiled walls.



HILLS







Hills | Salfords Estate Agent

Hills Residential, Sentinel House Albert Street – M30 0SS

0161 707 4900

sales@hills.agency

www.hills.agency/



THE PROPERTY MISDESCRIPTIONS ACT 1991 The Agent has not tested any apparatus, equipment, fixtures and fittings or services and so cannot verify that they are in working order or fit for the purpose. A Buyer is advised to obtain verification from their Solicitor or Surveyor. References to the Tenure of a Property are based on information supplied by the Seller. The Agent has not had sight of the title documents. A Buyer is advised to obtain verification from their Solicitor. You are advised to check the availability of this property before travelling any distance to view. Every effort and precaution has been made to ensure these particulars are correct and not misleading but their accuracy is not guaranteed nor do they form part of any contract. If there is any point which is of particular importance to you, please contact us and we will provide any information you require. This is advisable, particularly if you intend to travel some distance to view the property. The mention of any appliances and services within these details does not imply that they are in full and efficient working order. These particulars are in draft form awaiting Vendors confirmation of their accuracy. These details must therefore be taken as a guide only.