

CASTLE ROAD ALCESTER WARWICKSHIRE



An extended, and deceptively spacious, end of terrace family home offering versatile accommodation and ample driveway parking. The accommodation comprises: Porch and reception hallway, modern open-plan kitchen/diner with family room and conservatory, living room with feature fireplace and patio doors, three bedrooms, bathroom, side garage and generously sized garden to rear. Offering potential for extension, subject to the usual consents.

£299,950

6 Castle Road, Alcester, Warwickshire, B49 6BG

Living Room 5.40m (17'9") x 3.69m (12'1")



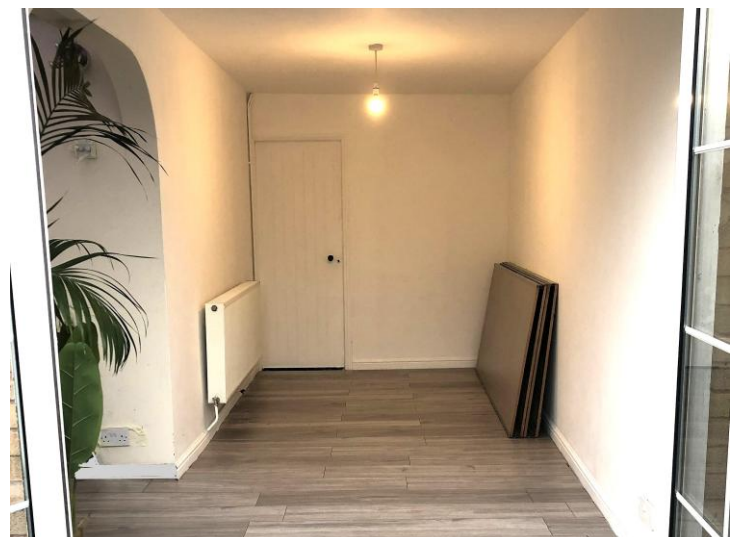
Conservatory 3.11m (10'2") x 1.69m (5'7")



Kitchen/Diner 5.40m (17'9") x 2.90m (9'6")



Family Room 4.61m (15'1") x 2.57m (8'5")



Bedroom One
4.70m (15'5") x 3.53m (11'7")



Bathroom 2.90m (9'6") max x 1.77m (5'10")



Bedroom Two
3.53m (11'7") x 2.90m (9'6")



Garage 4.04m (13'3") x 2.57m (8'5") max

Bedroom Three
2.75m (9') x 2.36m (7'9")



Garden





Fixtures & Fittings

Please note that the fixtures & fittings shown on the photographs, contained within these property details, do not form part of a fixtures & fittings list. Some items may/may not be included. You are advised to clarify what items are included before entering into any negotiations.

Floor Plans & Property Details Disclaimer

These plans are for identification purposes only in relation to where one room is situated to another. They are not to be relied upon in any way for dimensions, scaling, or sq. ft/metres. We will not be held responsible for any loss incurred, due to reliance on these measurements from the floor plans or measurements from the property details. You are advised to confirm all measurements.

