



8 Le Clos Du Mont Arthur, Le Mont Arthur, St. Brelade  
£4,250 pcm

**BROADLANDS**  
FINDING YOU A HOME SINCE 1972



## 8 Le Clos Du Mont Arthur, Le Mont Arthur

St. Brelade, Jersey

- Detached 3 bedroom 2 bathroom bungalow
- Double garage and driveway parking for 4 cars
- Recently decorated and in excellent condition
- Enclosed rear garden which benefits from all day sunshine
- Gardens have recently been upgraded with new planting and turf
- Excellent location for St Brelade and St Aubin and the local bus route
- Qualified/Entitled status and long lease available
- Sole agent
- Call Tony on 07797726677 [tony@broadlandsjersey.com](mailto:tony@broadlandsjersey.com) or Nigel on 07797718233





## 8 Le Clos Du Mont Arthur, Le Mont Arthur

St. Brelade, Jersey

Nestled in a sought-after location, this impeccable detached 3 bedroom, 2 bathroom bungalow offers the epitome of modern living. Recently renovated to a high standard, the property boasts a double garage and driveway parking for four cars, ensuring both convenience and practicality. Inside, the stylish and well-planned interior feels both modern and inviting, making it a great place to call home. The property comes with **Qualified/Entitled** status and a long lease.

Stepping outside, the property offers a stunning enclosed rear garden creating an idyllic outdoor retreat. The gardens have been lovingly enhanced with fresh planting and lush turf, evoking a sense of tranquillity and privacy. With its prime location in close proximity to St Brelade, St Aubin, and local bus routes, This home is perfect for anyone looking for the ideal mix of convenience and peaceful living. Don't miss the opportunity to make this your new home. Contact Tony on 07797726677 or Nigel on 07797718233 to arrange a viewing today.





**Living**

Fully fitted eat-in kitchen. Large lounge with sliding doors to the garden. Dining room. Utility room.

**Sleeping**

Principal bedroom with en suite bathroom. 2 double bedrooms and a house bathroom.

**Services**

All mains (no gas). OFCH. Fibre broadband. White goods in Utility room and american fridges. Pets considered. References essential.

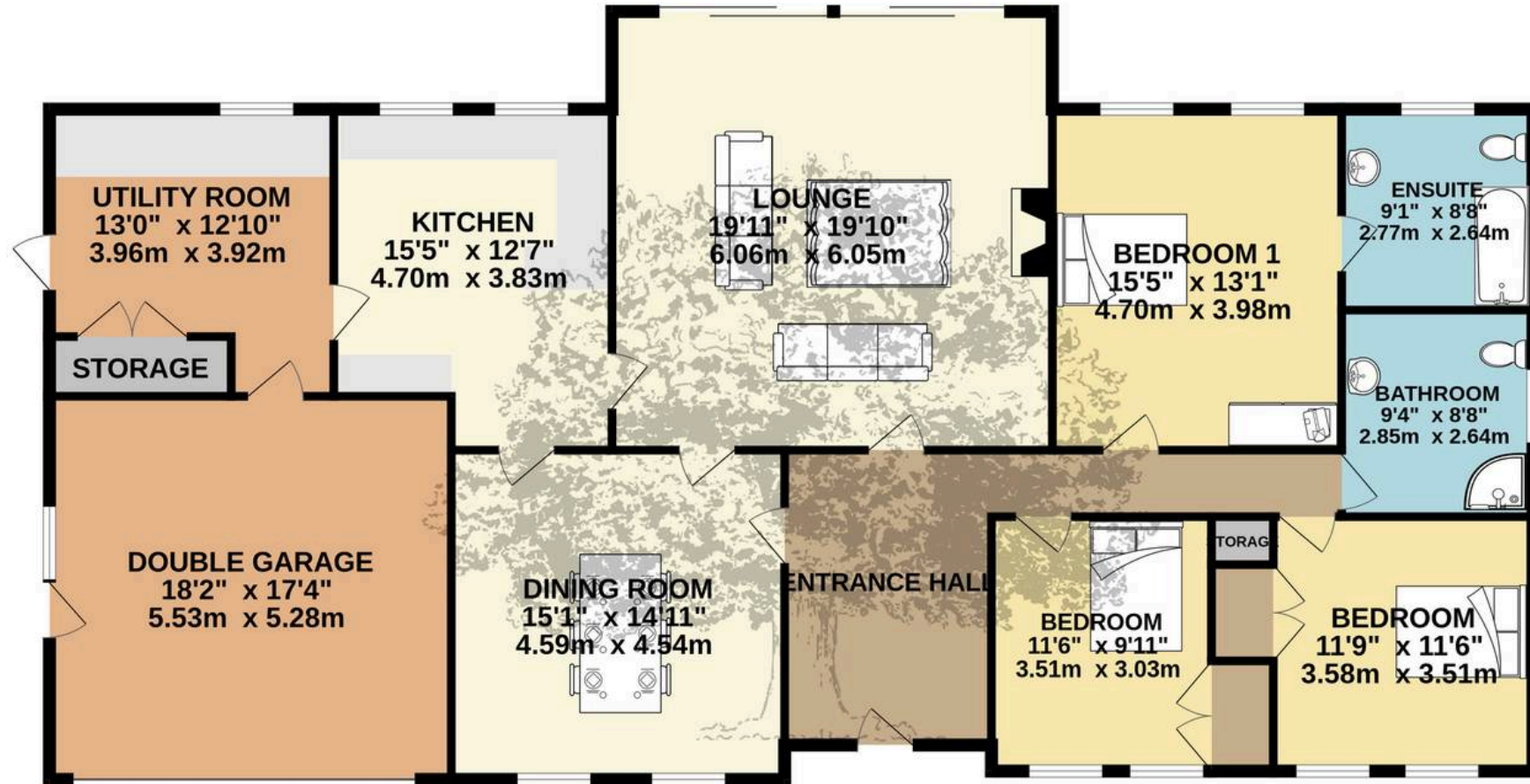








GROUND FLOOR  
2090 sq.ft. (194.1 sq.m.) approx.



TOTAL FLOOR AREA : 2090 sq.ft. (194.1 sq.m.) approx.

Whilst every attempt has been made to ensure the accuracy of the floorplan contained here, measurements of doors, windows, rooms and any other items are approximate and no responsibility is taken for any error, omission or mis-statement. This plan is for illustrative purposes only and should be used as such by any prospective purchaser. The services, systems and appliances shown have not been tested and no guarantee as to their operability or efficiency can be given.

Made with Metropix ©2025





## Broadlands

Broadlands Estates, Library Place - JE2 3NL

01534 880770 • [enquiries@broadlandsjersey.com](mailto:enquiries@broadlandsjersey.com) • [www.broadlandsjersey.com/](http://www.broadlandsjersey.com/)

# BROADLANDS

FINDING YOU A HOME SINCE 1972