



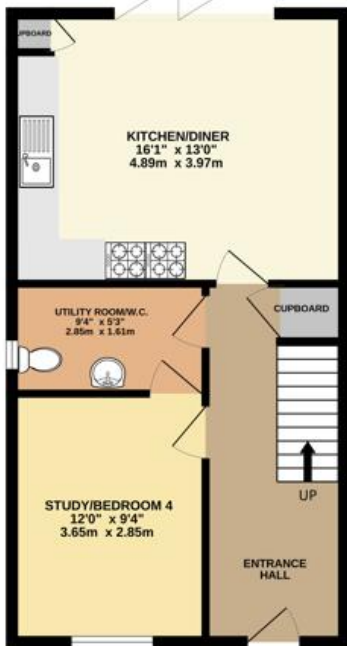
9 Bennett Croft | North Anston | Sheffield | S25 4DU

Guide Price £270,000 to £280,000

Bell & Co Estates are delighted to present this beautifully designed four-bedroom semi-detached home, set over three floors, offering spacious and flexible family living. The home welcomes you into a bright and spacious entrance hallway, complete with an understairs storage cupboard for practicality. The modern open-plan kitchen and dining area is beautifully finished, boasting integrated appliances, ample storage, and bi-folding doors that flood the space with natural light and open onto the rear garden. A versatile front-facing room can be used as a bedroom, home office, snug, or additional dining space, adding extra flexibility to the home. The first floor is home to a spacious lounge featuring a Juliet balcony, allowing for stunning open views and natural light to fill the room. Two well-sized front-facing bedrooms offer comfortable living spaces, while the modern family bathroom is complete with a bath, separate shower cubicle, wash basin, and WC. The entire top floor is dedicated to the master suite, offering a private retreat. This spacious bedroom includes a large storage cupboard and a modern ensuite, featuring a shower cubicle, wash basin, and WC. The front of the property includes a grassed and pebbled area, along with a driveway leading to the garage. The garage is currently being used as an office or occasional room. The private rear garden is low-maintenance, featuring Indian stone paving and artificial grass, making it perfect for relaxing or entertaining. Side gate access adds convenience. Don't miss out on this fantastic family home!



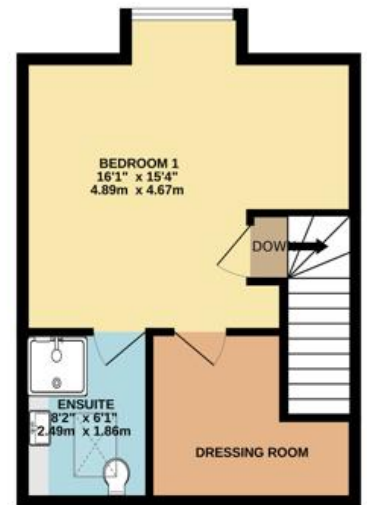
GROUND FLOOR
486 sq.ft. (45.1 sq.m.) approx.



1ST FLOOR
486 sq.ft. (45.1 sq.m.) approx.



2ND FLOOR
354 sq.ft. (32.9 sq.m.) approx.



Contact Details

79 Wales Road
Kiveton Park
Sheffield
South Yorkshire
S26 6RA

www.bellcoestates.com
info@bellcoestates.com
03333 580590

9, Bennett Croft
North Anston
SHEFFIELD
S25 4DU

Energy rating

C

Valid until
19 April 2027

Certificate number
2608-0066-6274-7863-2964

Property type

End-terrace house

Total floor area

124 square metres

Agents Note: Whilst every care has been taken to prepare these sales particulars, they are for guidance purposes only. All measurements are approximate are for general guidance purposes only and whilst every care has been taken to ensure their accuracy, they should not be relied upon and potential buyers are advised to recheck the measurements