

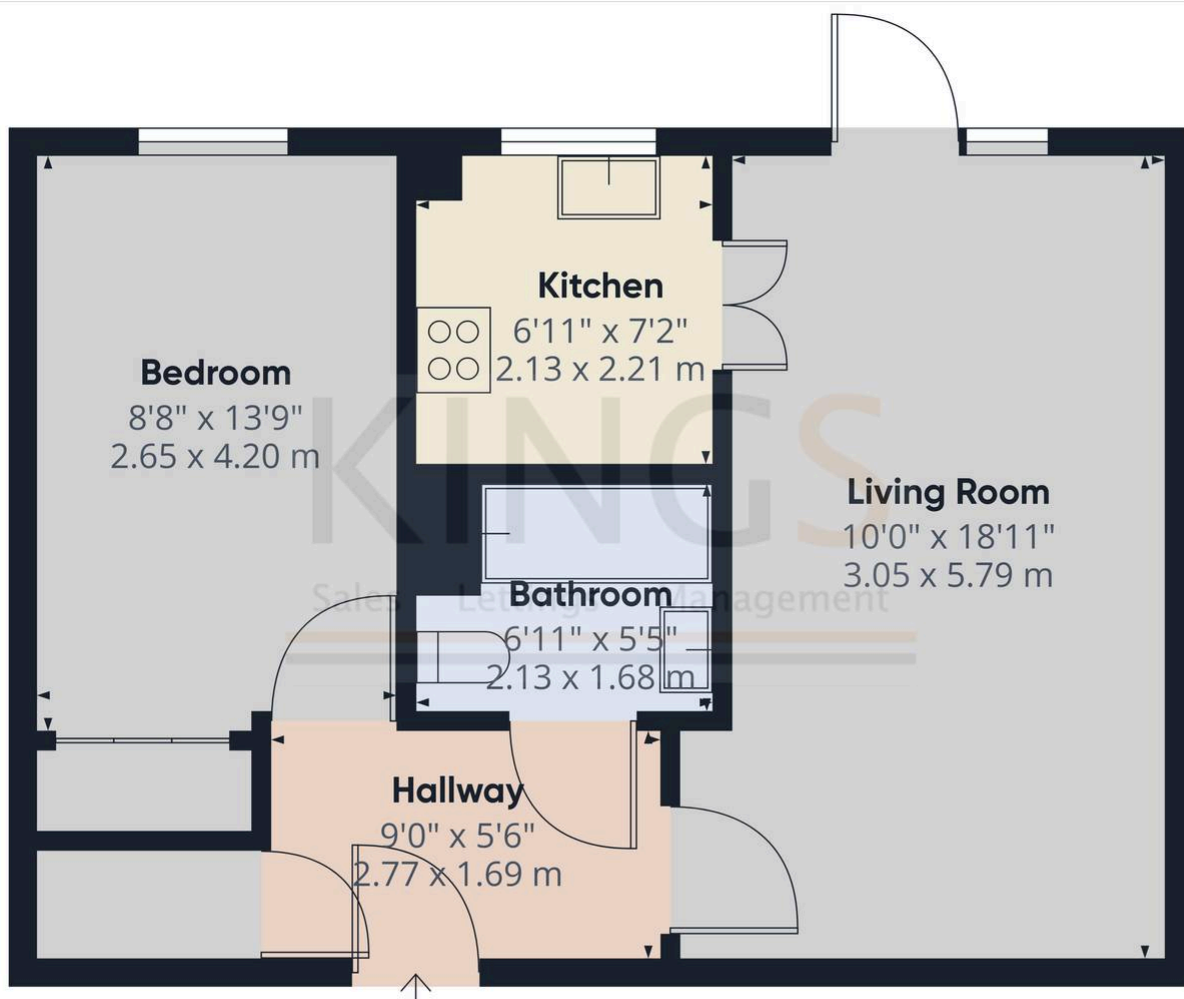


## Lewington Court, 591 Hertford Road

£100,000 Leasehold

FIRST FLOOR APARTMENT • ONE DOUBLE BEDROOM • PRIVATE BALCONY • LIFT SERVICED BLOCK • OVER 60'S DEVELOPMENT  
• COMMUNAL FACILITIES • CLOSE TO SHOPS AND AMENITIES • LEASEHOLD • EPC RATING - B

**KINGS**  
SALES LETTINGS MANAGEMENT



Approximate total area<sup>1)</sup>  
492.55 ft<sup>2</sup>  
45.76 m<sup>2</sup>

Excluding balconies and terraces

While every attempt has been made to ensure accuracy, all measurements are approximate, not to scale. This floor plan is for illustrative purposes only.

GIRAFFE360

