



£260,000
Leasehold

32 Meadow Court, 15 Hamilton Road
Sarisbury Green, Southampton, Hampshire SO31 7PU



Quick View

	1 Bedroom		No Garage
	1 Living Room		1 Bathroom
	Retirement Property		EPC Rating B
	No Parking		Council Tax Band C

Reasons to View

- Enjoying a corner position, you can people watch from one window over the Community Hospital Car Park, and the wildlife from the balcony and bedroom.
- An open plan kitchen to the living and dining space where you can comfortably entertain friends and family.
- The kitchen is fitted to a high specification with fresh white gloss units and integrated appliances for a sleek look.
- The generously sized bedroom has built in wardrobe space and a luxurious ensuite with a walk-in shower.
- With beautifully maintained grounds and gardens you can enjoy the spaces without the hassle of maintaining them yourself.
- Specifically for the over 55’s, Meadow Court is an independent living development with its own dedicated care and support team based on site if your needs require.

Description

Meadow Court is a place where you can enjoy the most of life, with a wealth of amenities to enjoy right on your doorstep, including an on-site hair salon, a communal lounge to enjoy film nights and functions. There is also a Café serving delicious snacks and meals. If travelling further afield is your thing then you can lock up and leave your apartment safe in the knowledge that your home will always be maintained to the highest possible standard.

This freshly painted first floor apartment is flooded with natural light and benefits from a dual aspect living room with a large balcony overlooking the grounds and adjacent woodland. Open plan to the dining area, the kitchen has fully integrated appliances including an oven, microwave, hob, fridge, freezer, dishwasher and even a water softener.

The hallway has generous storage cupboards for coats and shoes and a separate utility cupboard with washing machine giving extra storage for items such as linen basket, ironing board, vacuum and more.

The generous bedroom has built in wardrobes, a large window overlooking the gardens and woodland, so you can observe the wildlife from the comfort of your own bed, and spacious fully tiled ensuite bathroom with walk in shower.

Meadow Court is pet friendly, so your pets are welcome to enjoy their new lifestyle with you too, with the little details tailored for now and later living what is keeping you from taking the leap now to your new luxury independent living apartment.

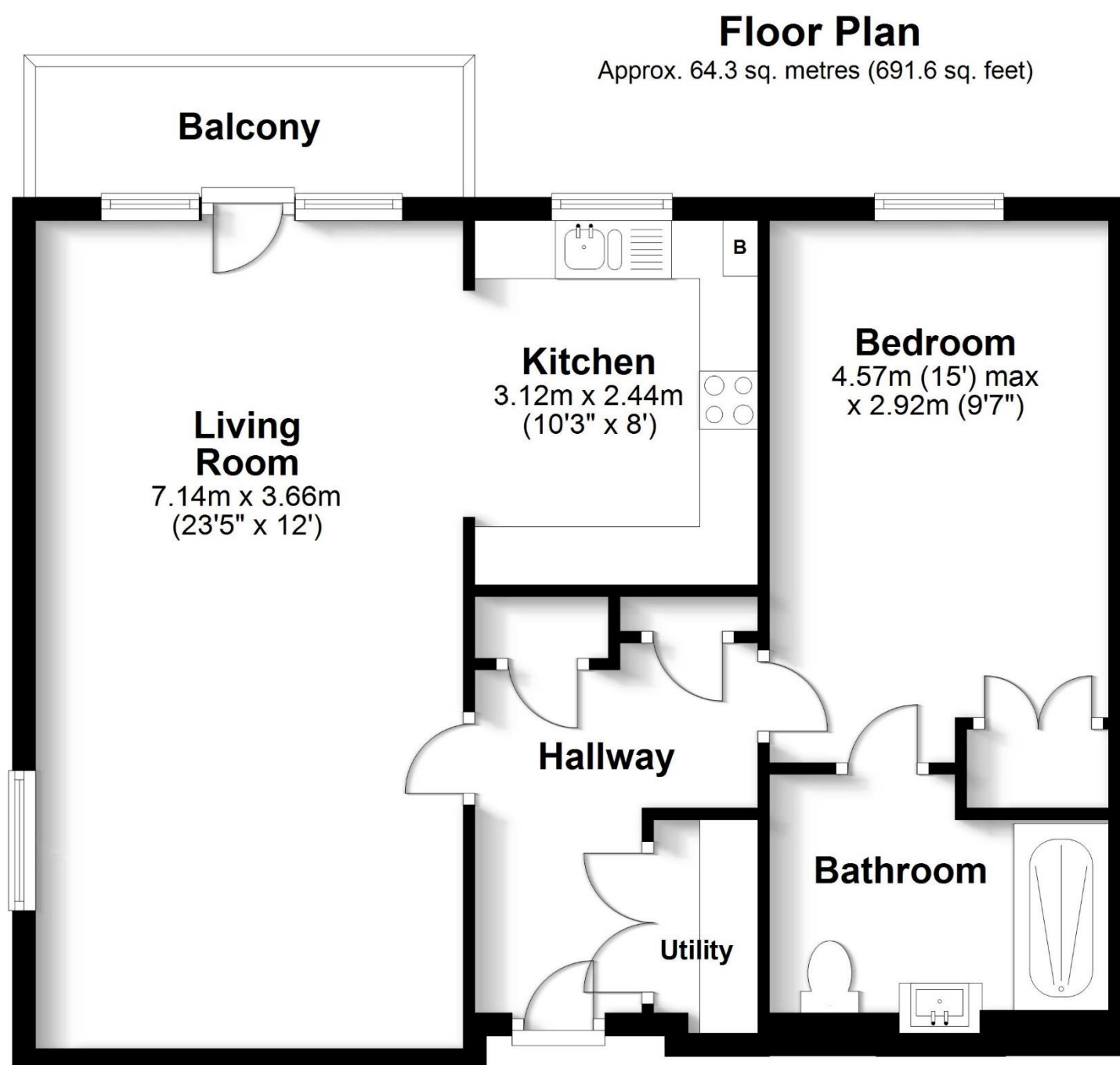
Other Information

This is a leasehold property for the over 55’s. The 125 year lease commenced 01/12/2018, there is no ground rent payable. The monthly service charge, payable to Anchor Hanover Group, from 01/04/25 is £502.20. Upon resale there is an admin fee payable of £660 and a contribution of 3% of the sale price towards the sinking fund.

This is a probate sale, probate has been granted.

Directions

<https://what3words.com/thread.changed.dramatic>



Total area: approx. 64.3 sq. metres (691.6 sq. feet)

Robinson Reade endeavour to supply accurate and reliable property information in line with Consumer Protection from Unfair Trading Regulations 2008, however please contact the office before viewing if there is any aspect which is particularly important to you and we will be pleased to provide the relevant information. These property details do not constitute any part of an offer or contract, all measurements are approximate. Any services, appliances and heating systems listed have not been checked. We must point out that where we introduce you to a third party who offers conveyancing, removal or financial services, e.g. legal, mortgage and insurance advice, we may earn a commission. For more information go to www.robinsonreade.co.uk/referral-fees. Robinson Reade Ltd, Registered office: 10 Middle Road, Park Gate, Southampton, SO31 7GH, Co Reg No: 5185152



Pop in to see us at 10 Middle Road, Park Gate, Southampton, Hampshire, SO31 7GH

Email us sales@robinsonreade.co.uk Visit us www.robinsonreade.co.uk

Call us on 01489 579009

Independent Sales & Letting Agents for the Strawberry Coast