



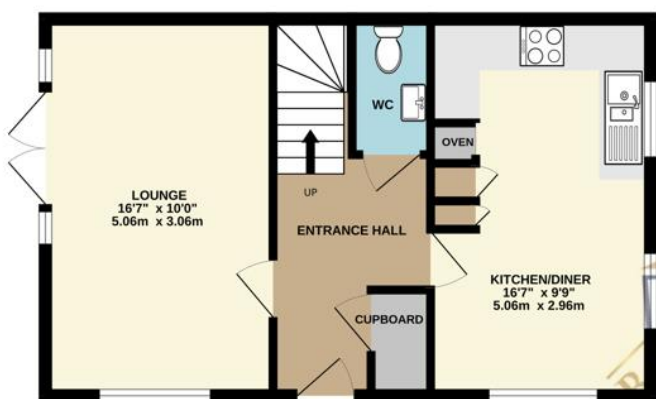
65 Wentworth Way | Dinnington | Sheffield | S25 2AY

Guide Price £180,000 to £190,000

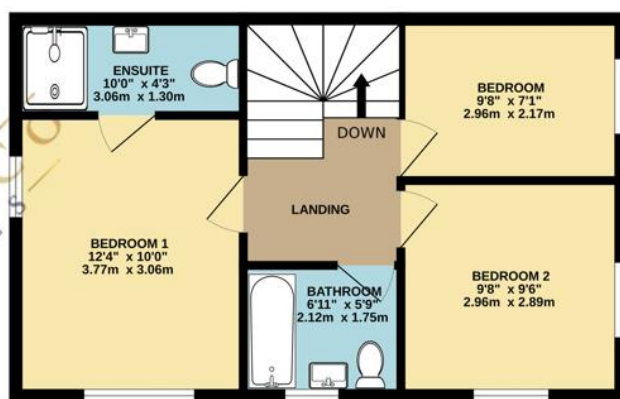
Bell & Co Estates are delighted to present this stunning, move-in-ready three-bedroom semi-detached home, situated on a popular new development in Dinnington. Exclusively available to first-time buyers through the STEP UP Scheme, this home offers a fantastic opportunity to get on the property ladder in a modern, stylish, and affordable way. Upon entering, you are welcomed by a spacious entrance hall, leading to a convenient downstairs WC and storage room. The contemporary kitchen-diner, complete with integrated appliances, provides the perfect space for cooking and entertaining. The large lounge is bright and inviting, with patio doors opening onto the enclosed rear garden. Upstairs, you'll find three well-proportioned bedrooms, including a master bedroom with an en-suite shower room. The main family bathroom is fitted with a shower over bath, sink, and WC. Outside, the property benefits from allocated parking for two vehicles and a private rear garden, perfect for relaxing and entertaining. Situated in a popular new development and close to local shops, schools, and amenities as well as excellent transport links for commuting. This home is simply stunning, with nothing to do but move in – making it the perfect FIRST home! Viewing is highly recommended! Contact Bell & Co Estates today to arrange your appointment.



GROUND FLOOR
443 sq.ft. (41.2 sq.m.) approx.



1ST FLOOR
443 sq.ft. (41.2 sq.m.) approx.



Contact Details

79 Wales Road
Kiveton Park
Sheffield
South Yorkshire
S26 6RA

www.bellcoestates.com
info@bellcoestates.com
03333 580590

65 Wentworth Way
Dinnington
ROTHERHAM
S25 2AY

Energy rating

B

Valid until

8 June 2032

Certificate number

0418-3017-8306-3482-0204

Property type

Semi-detached house

Total floor area

87 square metres

Agents Note: Whilst every care has been taken to prepare these sales particulars, they are for guidance purposes only. All measurements are approximate are for general guidance purposes only and whilst every care has been taken to ensure their accuracy, they should not be relied upon and potential buyers are advised to recheck the measurements