



36 Hodges Close, Swindon, SN1 7DX

Guide Price £385,000

richard james





## Hodges Close

Swindon

Freehold | EPC Rating - B

 4
  2
  1

This fantastic semi detached, three storey home is being offered with the onward chain complete and can be found on the edge of the new Wichelstowe development and is only a short and scenic stroll from the canal, Waitrose, Hall & Woodhouse Restaurant and popular Deanery Secondary School.

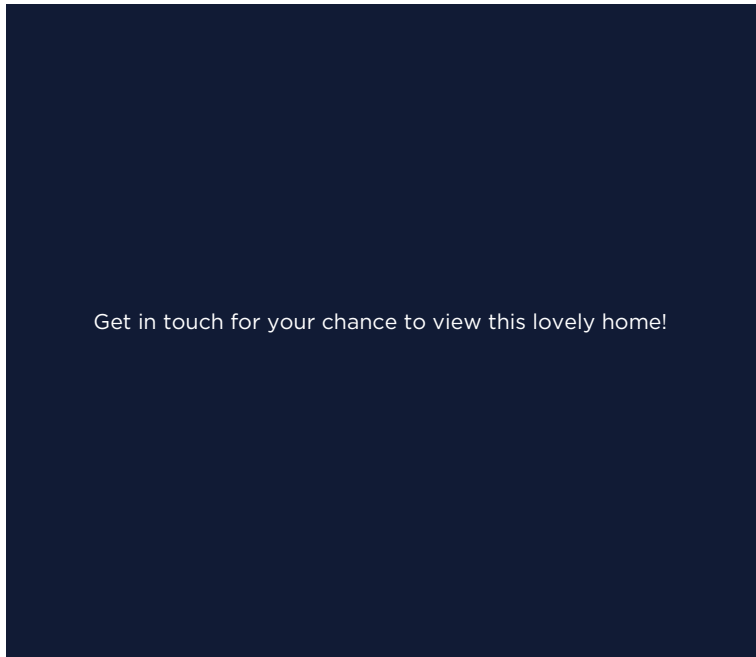
The very well presented and spacious home, offers versatile accommodation over three floors, which comprises; Hall with useful Cloaks Cupboard, Bedroom Four/Study, Cloakroom and 19' modern fitted Kitchen with integrated appliances and offers seating and dining space with patio doors, opening into the enclosed Rear Garden.

To the first floor, you'll find the Sitting Room with open aspect to the front, as well as, Bedroom One with Ensuite Shower Room, with double shower. With Two further double Bedrooms and Family Bathroom, to the first floor.

To the outside, there is the enclosed Rear Garden with patio and lawn, with driveway to side leading to the Garage, with power and light connected.

Further features include PVCu Double Glazing and Gas Radiator Heating.















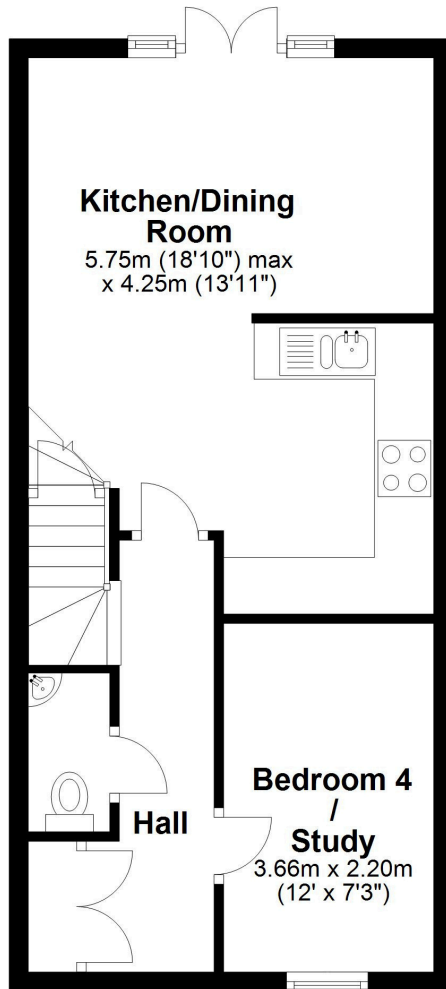




# Floorplan

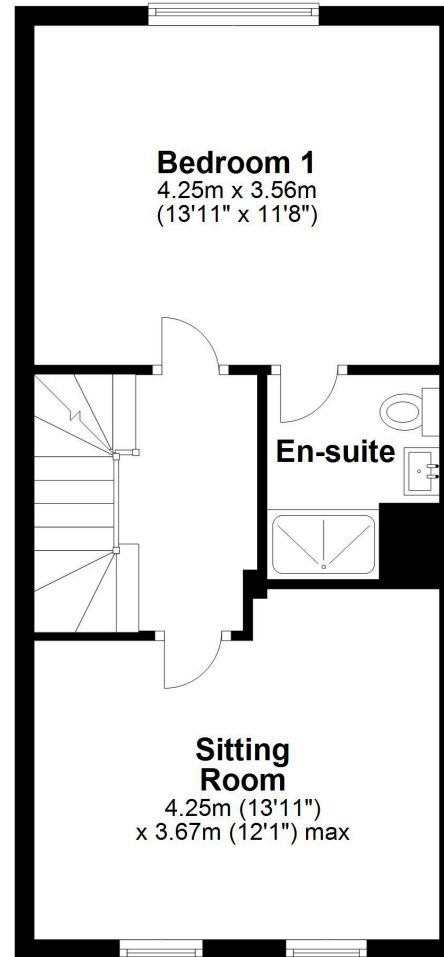
## Ground Floor

Approx. 40.6 sq. metres (437.1 sq. feet)



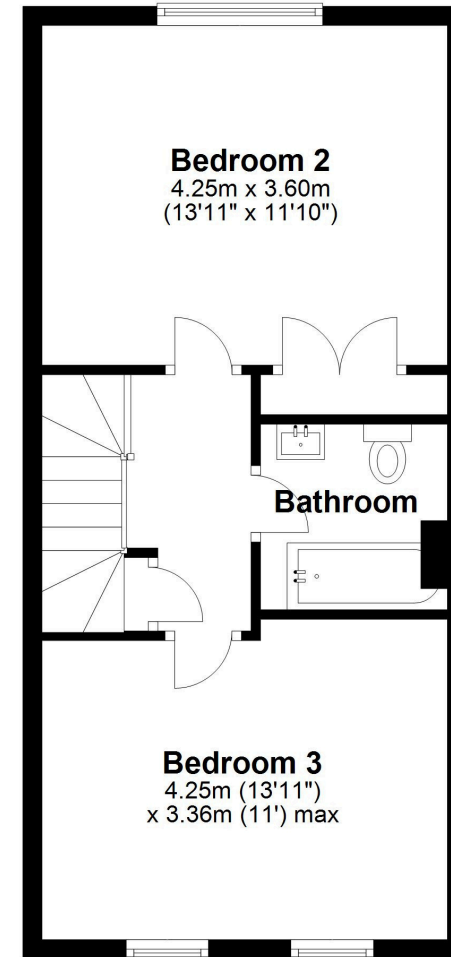
## First Floor

Approx. 40.7 sq. metres (437.9 sq. feet)



## Second Floor

Approx. 40.9 sq. metres (439.7 sq. feet)



**01793 520 720**

[oldtown@richardjames.uk](mailto:oldtown@richardjames.uk)

101 Victoria Road | Swindon | SN1 3BD

**richard james**

[richardjames.uk](http://richardjames.uk)