



13 Horncliffe Road

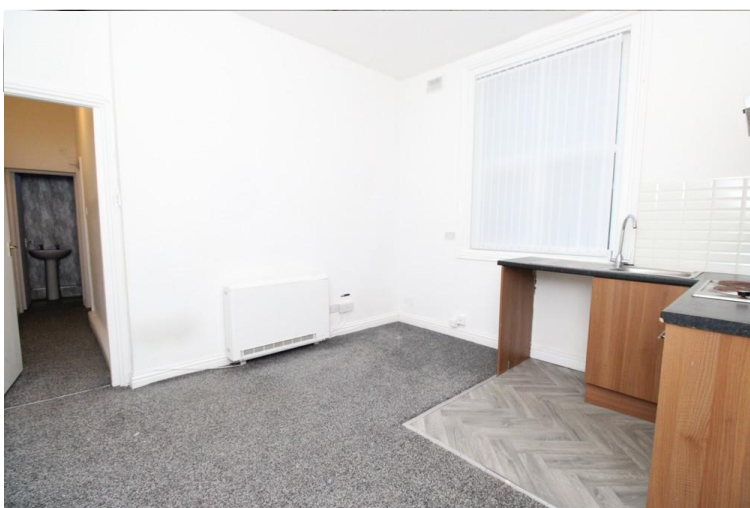
Blackpool, FY4 1LJ

- **GROUND FLOOR FLAT IN QUIET BLOCK**
- **OPEN PLAN LOUNGE & KITCHEN**
- **DOUBLE BEDROOM & SHOWER ROOM**
- **ECO 7 HEATING & DOUBLE GLAZING**

£525 pcm

EPC Rating '68'





Property Description

LOUNGE - KITCHEN

11' 48" x 11' 81" (4.57m x 5.41m) LOUNGE WITH KITCHEN OFF, RANGE OF WALL AND BASE UNITS, ELECTRIC OVEN AND ELECTRIC HOB AND EXTRACTOR FAN. PLUMBED FOR WASHING MACHINE.

BEDROOM

4' 61" x 3' 77" (2.77m x 2.87m) DOUBLE BEDROOM WITH ELECTRIC HEATER, UPVC REAR DOOR LEADING TO ACCESS TO REAR GARDEN.

SHOWER ROOM

11' 25" x 8' 83" (3.99m x 4.55m) NEWLY REFURBISHED SHOWER ROOM, WITH WC, WASH HAND BASIN, SHOWER CUBICLE WITH ELECTRIC SHOWER

