



6 The Old School Euclid Street, Swindon

Swindon

£165,000

6 The Old School Euclid Street

Swindon

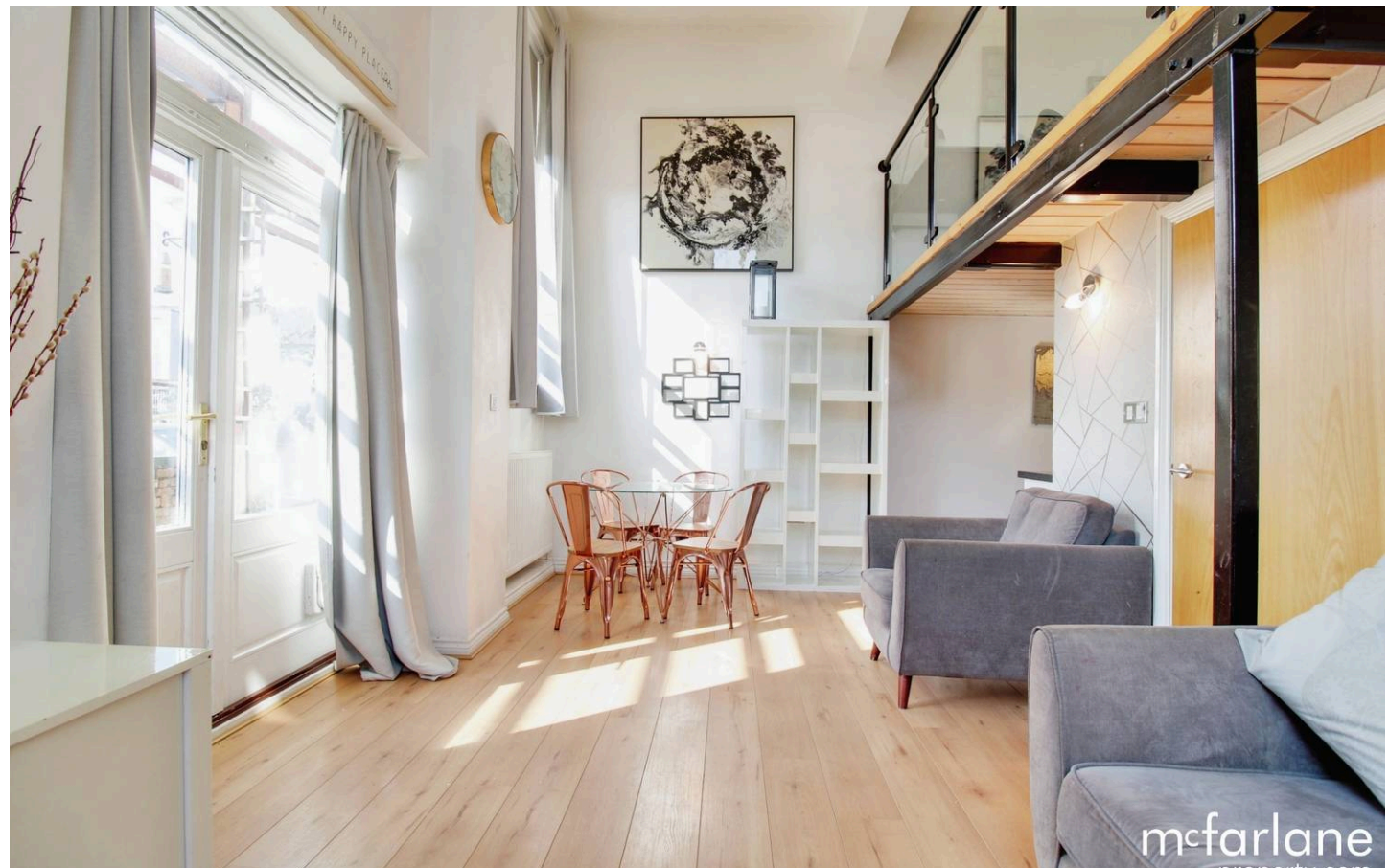
Nestled in a listed former school, this charming two-bedroom duplex blends period elegance with modern living. Set in the heart of Swindon, it features open-plan living, a stylish kitchen, a mezzanine master suite, and French doors to the outside. With secure gated parking and superb transport links, it's an ideal first home, downsize, or investment.

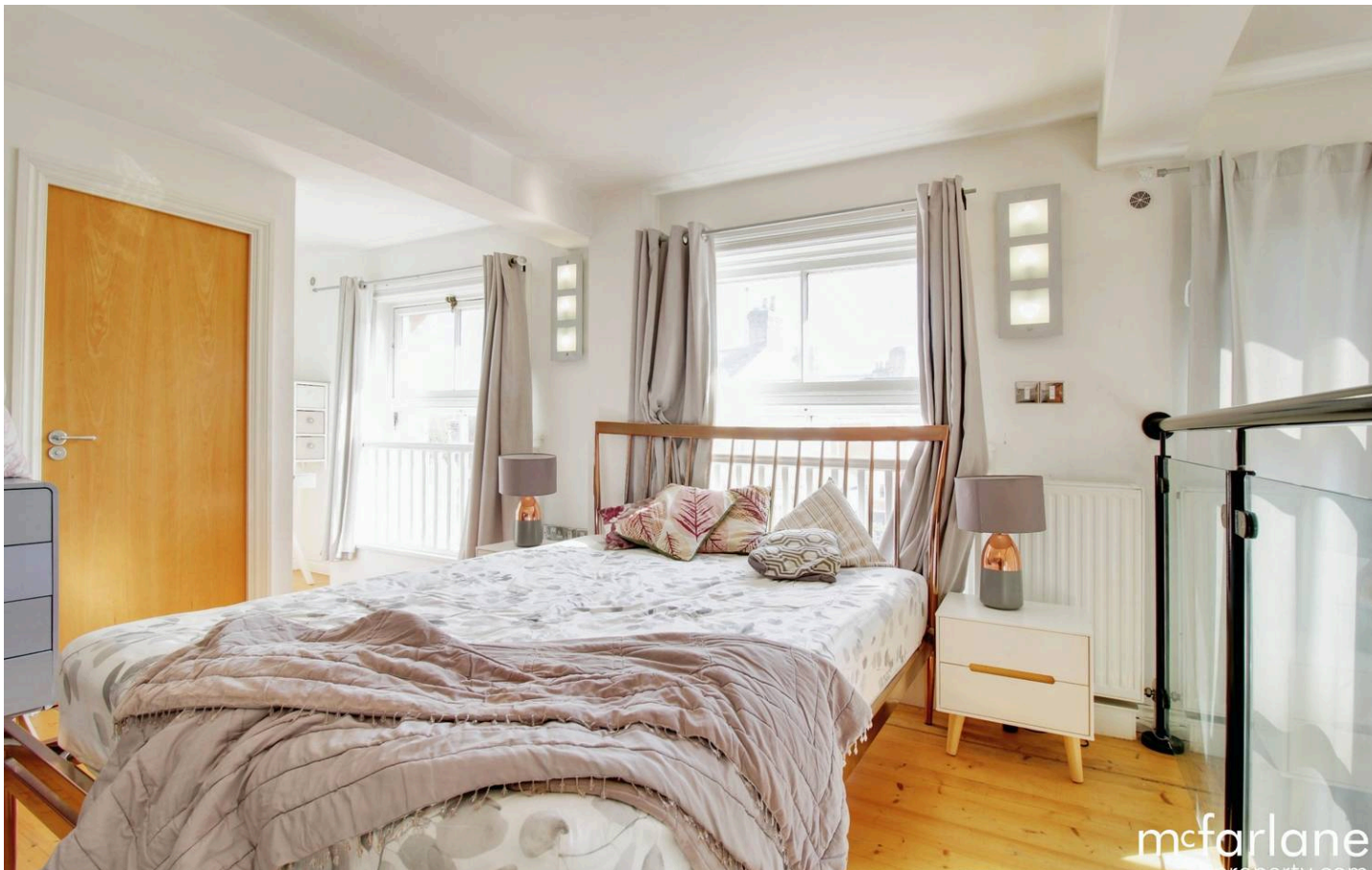
Council Tax band: B

Tenure: Leasehold

EPC Energy Efficiency Rating: C

EPC Environmental Impact Rating: C

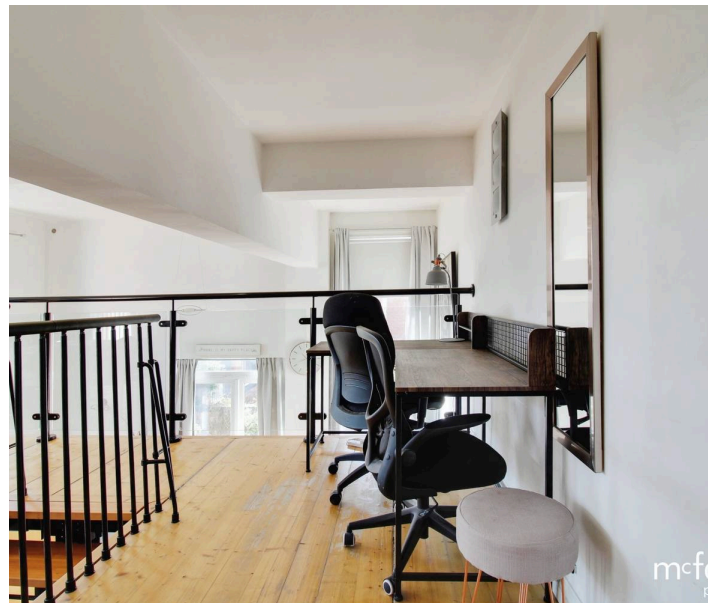
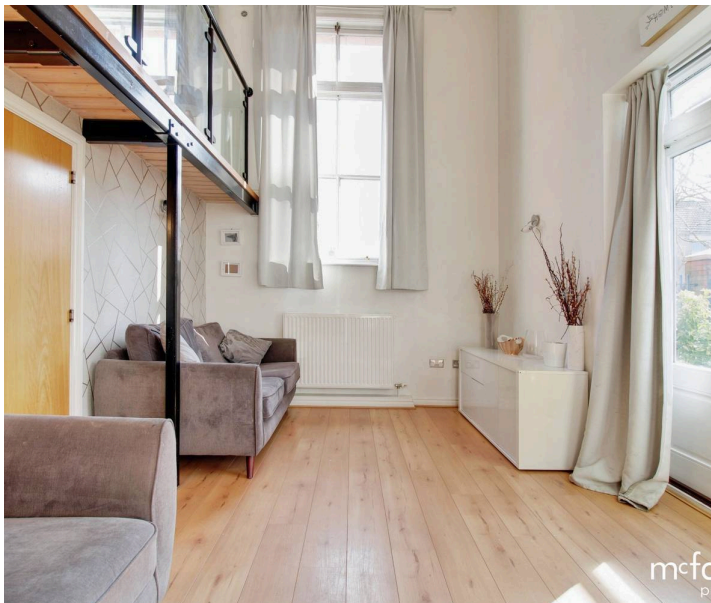




6 The Old School Euclid Street

Swindon, Swindon

- TWO BEDROOMS
- CENTRAL LOCATION
- SECURE ALLOCATED PARKING
- MEZZANINE MAIN BEDROOM
- NO ONWARDS CHAIN
- GRADE II LISTED



6 The Old School Euclid Street

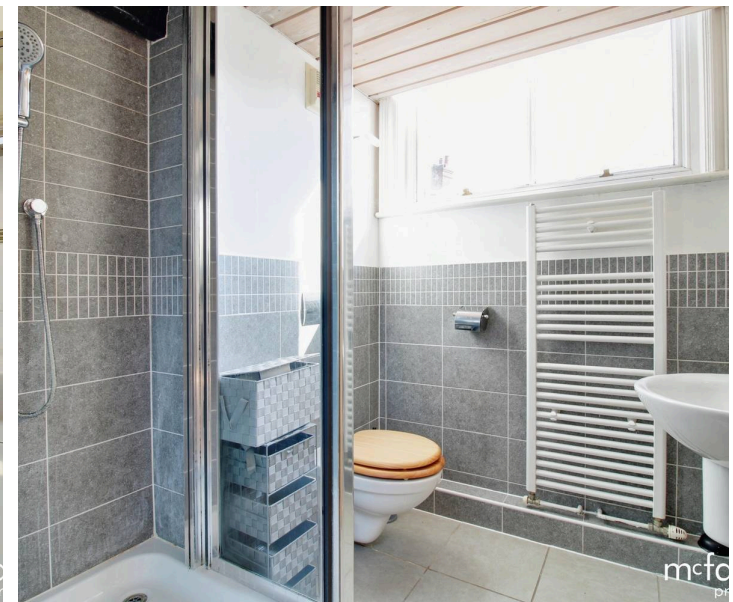
Swindon

Lease details:

978 years remaining.

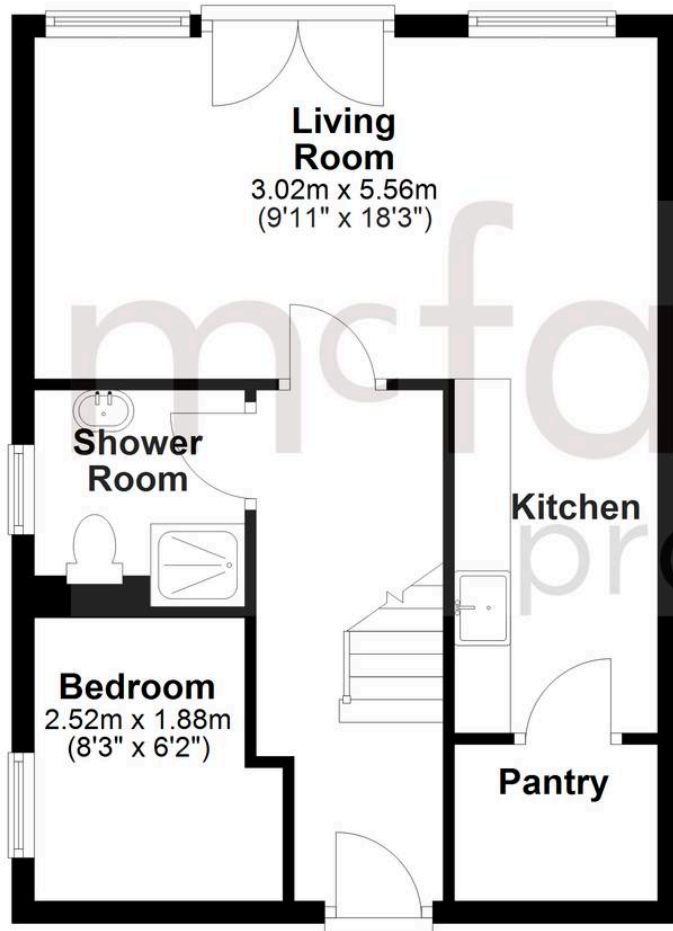
Annual Ground Rent: £150

Annual Management Charge: £2,900



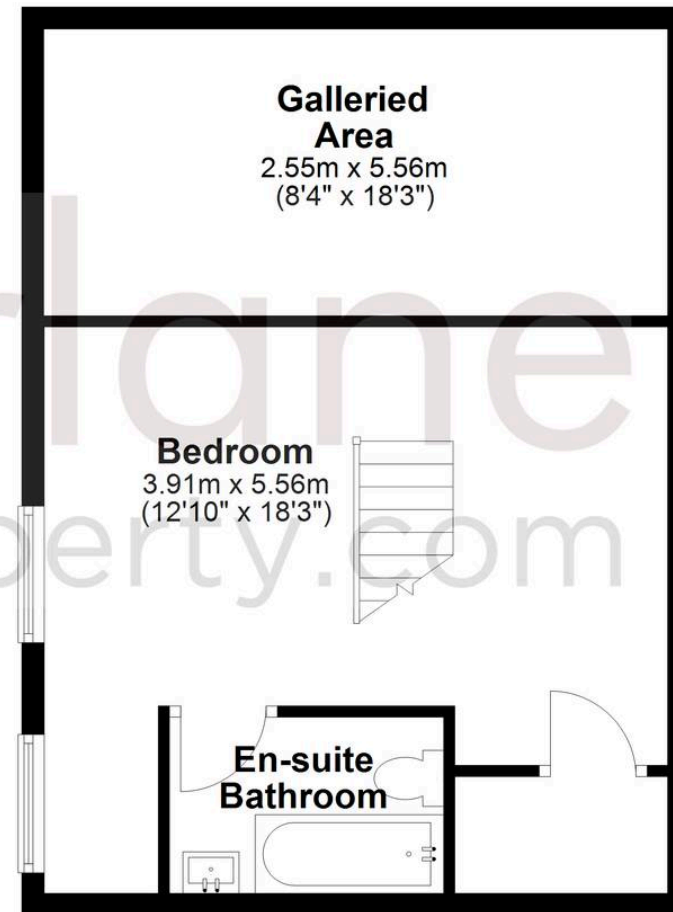
Ground Floor

Approx. 42.8 sq. metres (460.3 sq. feet)



Mezzanine

Approx. 42.8 sq. metres (460.3 sq. feet)



Total area: approx. 85.5 sq. metres (920.5 sq. feet)

McFarlane Sales & Lettings

McFarlane Sales & Letting Ltd, 28-30 Wood Street – SN1 4AB

01793 296880 • oldtown@mcfarlaneproperty.com • www.mcfarlaneproperty.com/

mcfarlane
property.com