

## 2 Mill Lane

Moreton, Ongar

Council Tax band: C

Tenure: Freehold

- Picturesque Essex countryside views
- Opportunity to extend (STP)
- Driveway
- Beautiful bathroom with freestanding tub and walk-in shower
- Private sunny garden with good size shed and brick storage room
- Short walk to the pretty village of Moreton
- Under twenty minutes drive to the M11





### Lounge

14' 3" x 13' 0" (4.34m x 3.96m)

### Kitchen

8' 8" x 8' 0" (2.64m x 2.44m)

### Home office

### Dining area / Conservatory

15' 11" x 9' 5" (4.85m x 2.87m)

### Bedroom 1

15' 2" x 9' 8" (4.62m x 2.95m)

### Bedroom 2

11' 4" x 8' 6" (3.45m x 2.59m)

### Bathroom

8' 5" x 8' 0" (2.57m x 2.44m)



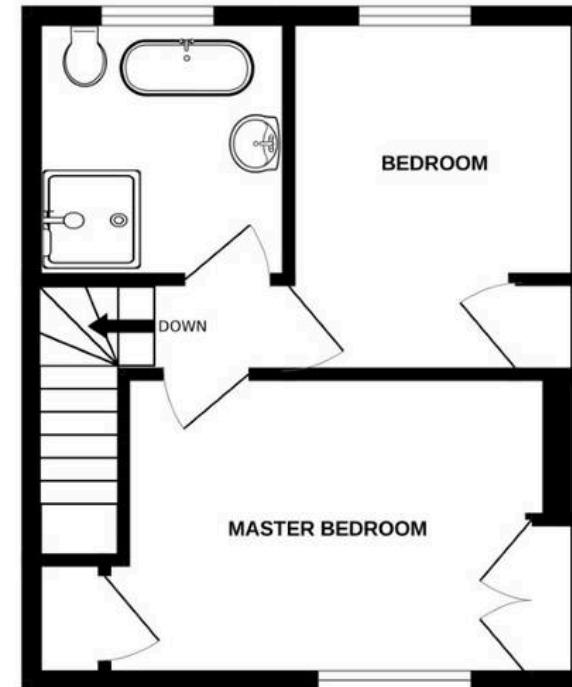




GROUND FLOOR  
512 sq.ft. (47.6 sq.m.) approx.



1ST FLOOR  
352 sq.ft. (32.7 sq.m.) approx.



TOTAL FLOOR AREA : 864 sq.ft. (80.3 sq.m.) approx.

Whilst every attempt has been made to ensure the accuracy of the floorplan contained here, measurements of doors, windows, rooms and any other items are approximate and no responsibility is taken for any error, omission or mis-statement. This plan is for illustrative purposes only and should be used as such by any prospective purchaser.