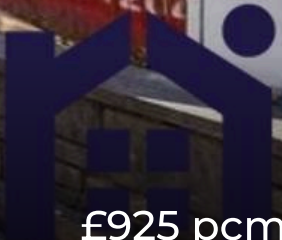


HOME  TRUTHS

Westhead Road, Croston

PR26 9RS

 £925 pcm

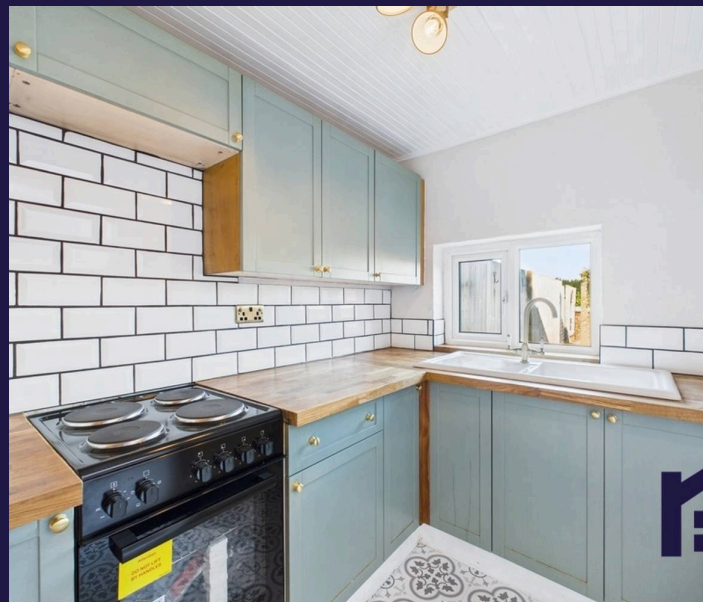


Delightful two bedroom cottage in the heart of Croston village with two reception rooms, two double bedrooms plus low maintenance garden and off road parking, this lovely family home is available to let immediately.

Step into the bright and airy living room with feature brick-built, currently unused, open fire place with stone hearth. The dining room is equally spacious and features a cast iron surround and leads to the rear kitchen. The kitchen has a range of wall and base units, sink unit and newly fitted cooker and leads to the utility room with space, power and plumbing for other appliances.

Externally the private rear garden is low maintenance, with gravel areas leading to a seating area at the bottom which is going to have new decking looking out to the cricket field.

Back inside, carpeted stairs lead to the first floor landing with a double bedroom and a comfortable single. The family bathroom comprises low level wc, wash hand basin and newly fitted panelled bath with shower over.



Within easy reach of village amenities, in the catchment area for excellent schools and with countryside walks on the doorstep, this family home is available to let immediately. The property is available now with a deposit of £1067, including holding deposit of £210.

Council Tax Band: B

EPC Energy Efficiency Rating: D

- Traditional two bedroom cottage
- Two reception rooms
- Off road parking
- Two bedrooms
- Low maintenance garden
- Available now



HOME  TRUTHS

Eccleston Branch

265 The Green, Eccleston, PR7 5TF
01257 451673

Coppull Branch

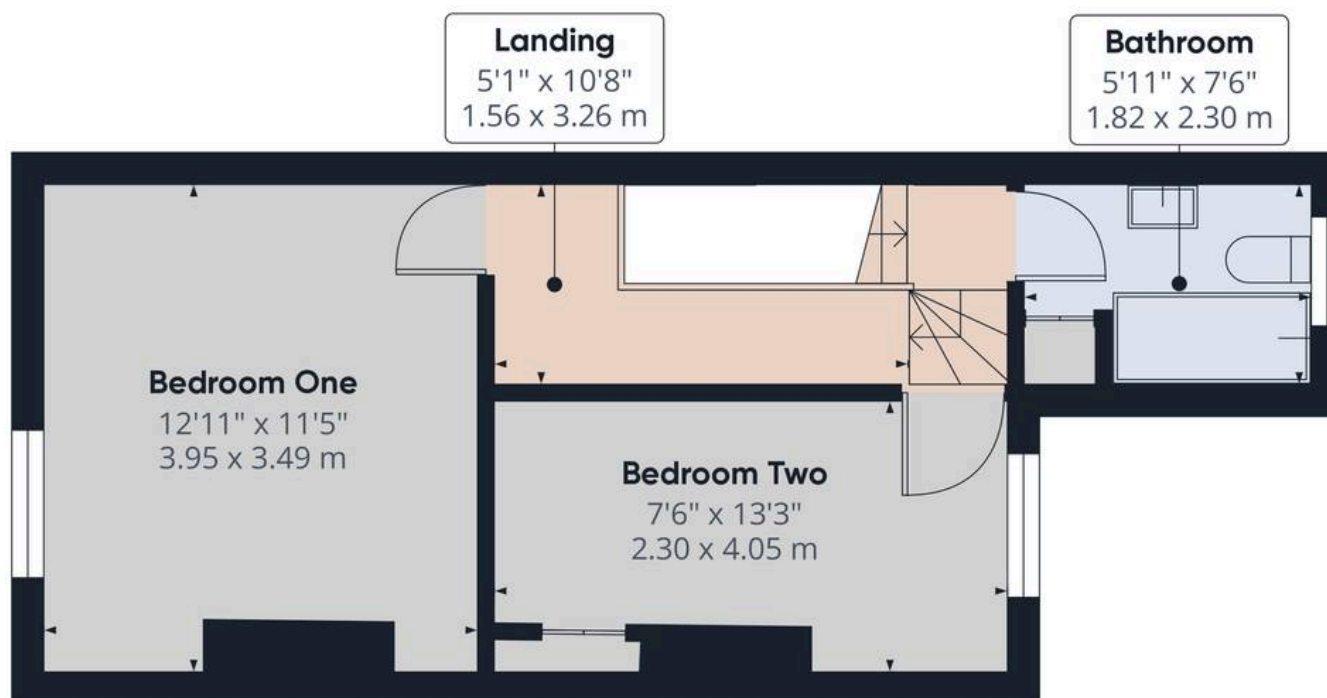
244 Spendmore Lane, Coppull, PR7 5DE
01257 794588

www.hometruthslancs.co.uk
office@hometruthslancs.co.uk





Floor 1



Floor 2

Approximate total area⁽¹⁾

701.15 ft²

65.14 m²

(1) Excluding balconies and terraces

While every attempt has been made to ensure accuracy, all measurements are approximate, not to scale. This floor plan is for illustrative purposes only.

Calculations are based on RICS IPMS 3C standard.

GIRAFFE360