



Rosebery House, East Street

Epsom

In Excess of £280,000



Rosebery House

Epsom

- Stunning one-double bedroom apartment
- Approx. 20ft wide covered south-facing balcony
- Beautifully presented throughout
- Close proximity to Epsom town centre and mainline station
- 240+ year lease
- Perfect first time buy or investment
- Modern kitchen and bathroom

Discover your urban oasis in this stunning one-bedroom apartment located just moments away from Epsom town centre. Step inside to find a beautifully presented living space, boasting a modern kitchen and bathroom perfect for every-day living. The spacious one-double bedroom provides a tranquil retreat after a long day, and the light-filled living room offers a cosy spot for relaxation. But the real gem of this property? An approx. 20ft wide covered south-facing balcony, where you can enjoy your morning coffee or soak up the sun all year round. With a 240+ year lease, this property is ideal for first-time buyers or savvy investors looking for a prime location.

Being just a stone's throw away from Epsom town centre and the mainline station, you'll have all the amenities you need right at your doorstep. Don't miss out on this rare opportunity to own a property that offers both style and substance, making every day feel like a retreat in the heart of Epsom.



Discover your urban oasis in this stunning one-bedroom apartment located just moments away from Epsom town centre. Step inside to find a beautifully presented living space, boasting a modern kitchen and bathroom perfect for every-day living. The spacious one-double bedroom provides a tranquil retreat after a long day, and the light-filled living room offers a cosy spot for relaxation. But the real gem of this property? An approx. 20ft wide covered south-facing balcony, where you can enjoy your morning coffee or soak up the sun all year round. With a 240+ year lease, this property is ideal for first-time buyers or savvy investors looking for a prime location.

Being just a stone's throw away from Epsom town centre and the mainline station, you'll have all the amenities you need right at your doorstep. Don't miss out on this rare opportunity to own a property that offers both style and substance, making every day feel like a retreat in the heart of Epsom.

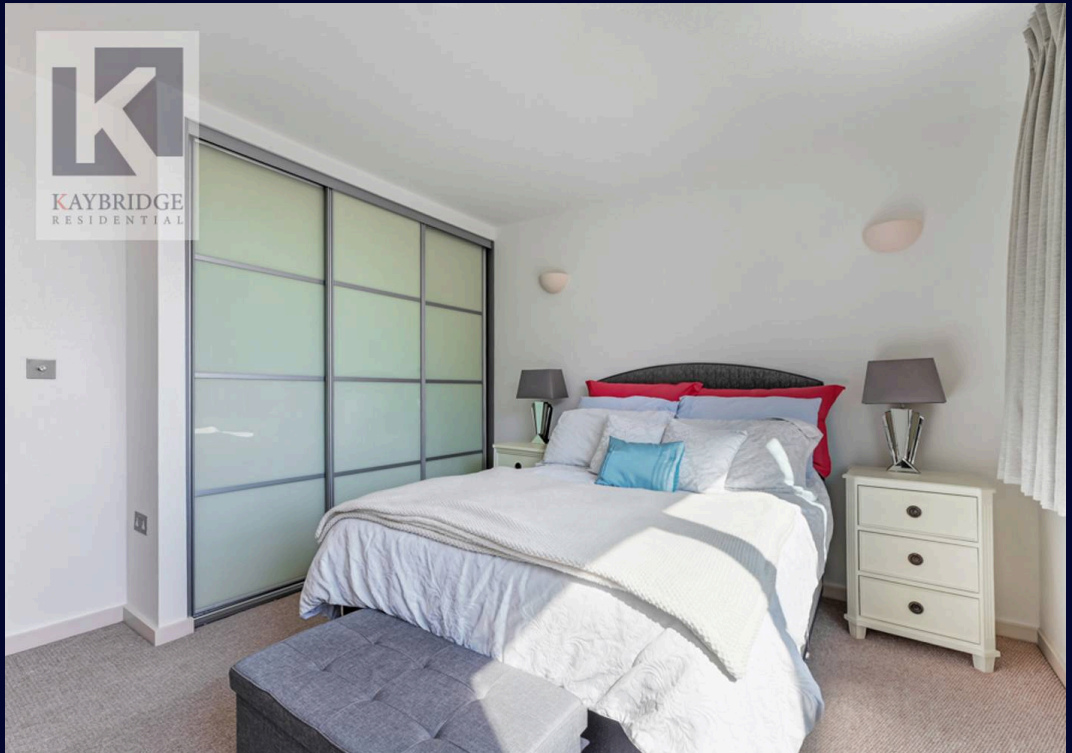
Council Tax band: TBD

Tenure: Leasehold

EPC Energy Efficiency Rating: C

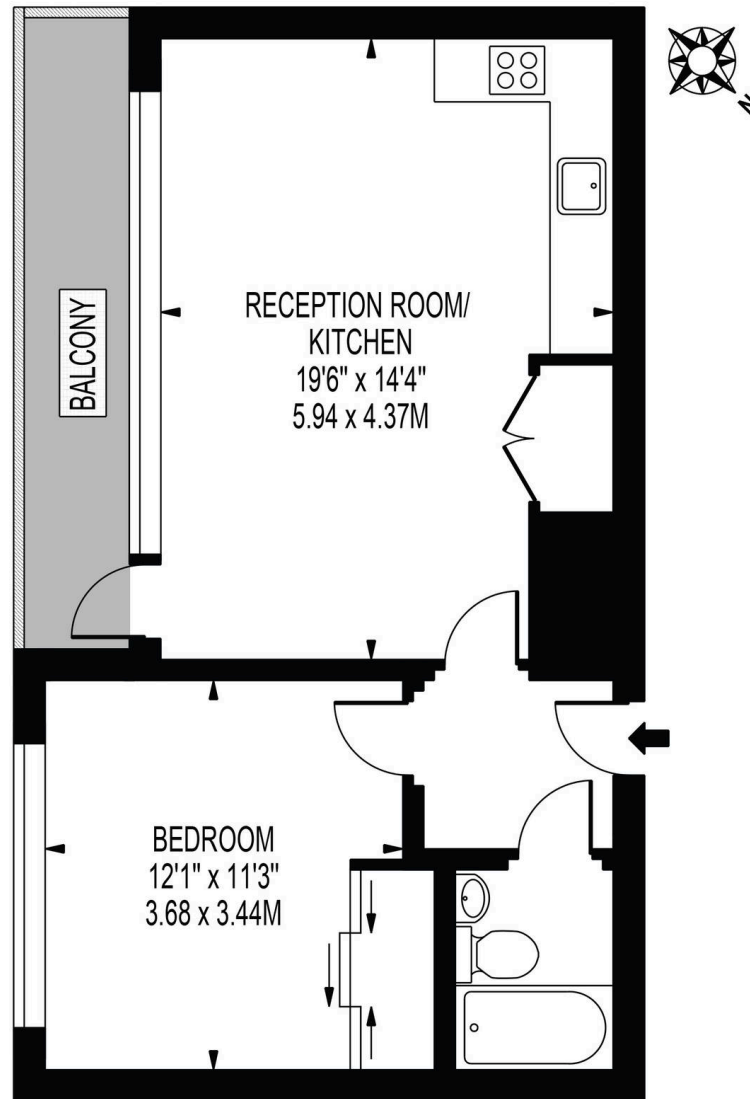
EPC Environmental Impact Rating: C





ROSEBERY HOUSE

APPROXIMATE GROSS INTERNAL FLOOR AREA: 497 SQ FT - 46.21 SQ M



SECOND FLOOR

FOR ILLUSTRATION PURPOSES ONLY

THIS FLOOR PLAN SHOULD BE USED AS A GENERAL OUTLINE FOR GUIDANCE ONLY AND DOES NOT CONSTITUTE IN WHOLE OR IN PART AN OFFER OR CONTRACT.
ANY INTENDING PURCHASER OR LESSEE SHOULD SATISFY THEMSELVES BY INSPECTION, SEARCHES, ENQUIRIES AND FULL SURVEY AS TO THE CORRECTNESS OF EACH STATEMENT.
ANY AREAS, MEASUREMENTS OR DISTANCES QUOTED ARE APPROXIMATE AND SHOULD NOT BE USED TO VALUE A PROPERTY OR BE THE BASIS OF ANY SALE OR LET.



Kaybridge Residential Estate Agents

Kaybridge Residential Estate Agents, 23 Stoneleigh Broadway - KT17 2JE

02080040474 • info@kbridge.co.uk • www.kaybridgeresidential.co.uk/

The information contained in this brochure is provided for marketing purposes only. While every effort has been made to ensure the details provided, Kaybridge Residential cannot guarantee the accuracy, correctness, completeness, or up-to-date nature of the information. The content is for general information only and may not represent its price or value.



KAYBRIDGE
RESIDENTIAL