



24 Wickstead Close, Woodthorpe – NG5 4HF

Guide Price £280,000

DavidJames
the estate agent



24 Wickstead Close

Woodthorpe, Nottingham

GUIDE PRICE £280,000-£290,000 Well-presented detached bungalow in quiet cul-de-sac, offered with no chain! Bright lounge, modern kitchen, 2 double beds and shower room plus a garden, drive and garage!

Council Tax band: C

Tenure: Freehold

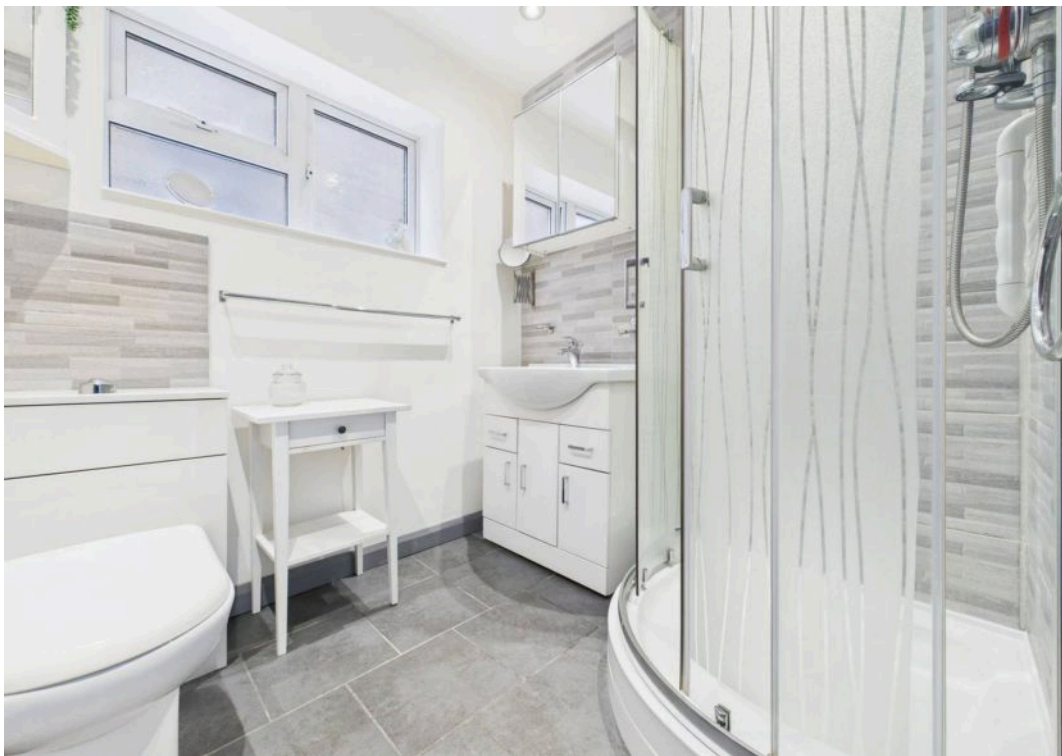
EPC Energy Efficiency Rating: D

EPC Environmental Impact Rating: D

- Well-presented detached bungalow in a peaceful cul-de-sac location
- Within easy reach of Mapperley's amenities, eateries and frequent bus services
- Offered to the market with no upward chain and ideal for those seeking single-storey living
- Spacious lounge with a feature contemporary electric fire
- Bright modern kitchen with integrated appliances and built-in breakfast bar
- Generous conservatory with radiator and French doors onto rear garden
- Modern shower room with a three-piece contemporary white suite
- Low-maintenance garden with paving and artificial grass plus a greenhouse and shed
- Driveway parking and garage with power and lighting









Floor 0 Building 1



Floor 0 Building 2

Approximate total area⁽¹⁾

90.89 m²

978.28 ft²

(1) Excluding balconies and terraces

While every attempt has been made to ensure accuracy, all measurements are approximate, not to scale. This floor plan is for illustrative purposes only.

GIRAFFE360



David James Estate Agents

David James Estate Agents, 45B Plains Road – NG3 5JU

0115 962 4213 • mapperley@david-james.com • www.david-james.com

These particulars are produced in good faith and are set out as a general guide only. Measurements are approximate and floor plans are for illustrative purposes only. Services have not been tested. We have established professional relationships with third-party suppliers for the provision of services to Clients, details of which can be found on the property listing page on our website.