



2 John Amooore Lane, Ashford
£220,000

2 John Amooore Lane

Ashford, Ashford

Stunning 2-bed apartment in Repton Park with private entrance, open-plan living space, en-suite bathroom, private patio, and allocated parking. No onward chain. Ideal investment and convenient living.

Council Tax band: B

Tenure: Leasehold

- NO ONWARD CHAIN
- Spacious 2 Bedroom Ground Floor Apartment with Private Entrance
- Popular Repton Park Location with Great Access to Local Amenities
- En-suite
- Allocated Parking Space
- Private Patio Area
- Open Plan Lounge/Diner & Kitchen
- Balance of Lease expiring 2142 (116 years)
- Service Charge £1200 per annum and Ground Rent of £180 per annum



Hallway

Private entrance to hall, carpeted, 2 large storage cupboards and doors through to bedrooms, living area and family bathroom.

Lounge

20' 4" x 11' 3" (6.20m x 3.43m)

Carpeted with window to side and sliding patio doors to private patio area.

Kitchen

Range of white gloss cupboard and drawers beneath worksurfaces and additional wall mounted units. Window, wall mounted gas boiler, space and plumbing for washing machine and dishwasher, stainless steel sink with mixer tap and drainer, electric hob with extractor over and low level oven.

Bedroom

11' 4" x 10' 6" (3.45m x 3.20m)

Carpeted with windows to side and rear.

En-suite

Low level wc, pedestal wash hand basin with mixer tap and tiled splashback, fully tiled shower cubicle, extractor fan.

Bedroom

13' 0" x 10' 6" (3.96m x 3.20m)

Carpeted with window to rear and range of built in storage.

Family Bathroom

White suite comprising low level wc, pedestal wash hand basin with mixer tap and tiled splashback, panelled bath with mixer tap and shower attachment, locally wallled tiled, extractor fan.





Hallway

Private entrance to hall, carpeted, 2 large storage cupboards and doors through to bedrooms, living area and family bathroom.

Lounge

20' 4" x 11' 3" (6.20m x 3.43m)

Carpeted with window to side and sliding patio doors to private patio area.

Kitchen

Range of white gloss cupboard and drawers beneath worksurfaces and additional wall mounted units. Window, wall mounted gas boiler, space and plumbing for washing machine and dishwasher, stainless steel sink with mixer tap and drainer, electric hob with extractor over and low level oven.

Bedroom

11' 4" x 10' 6" (3.45m x 3.20m)

Carpeted with windows to side and rear.

En-suite

Low level wc, pedestal wash hand basin with mixer tap and tiled splashback, fully tiled shower cubicle, extractor fan.



Bedroom

13' 0" x 10' 6" (3.96m x 3.20m)

Carpeted with window to rear and range of built in storage.

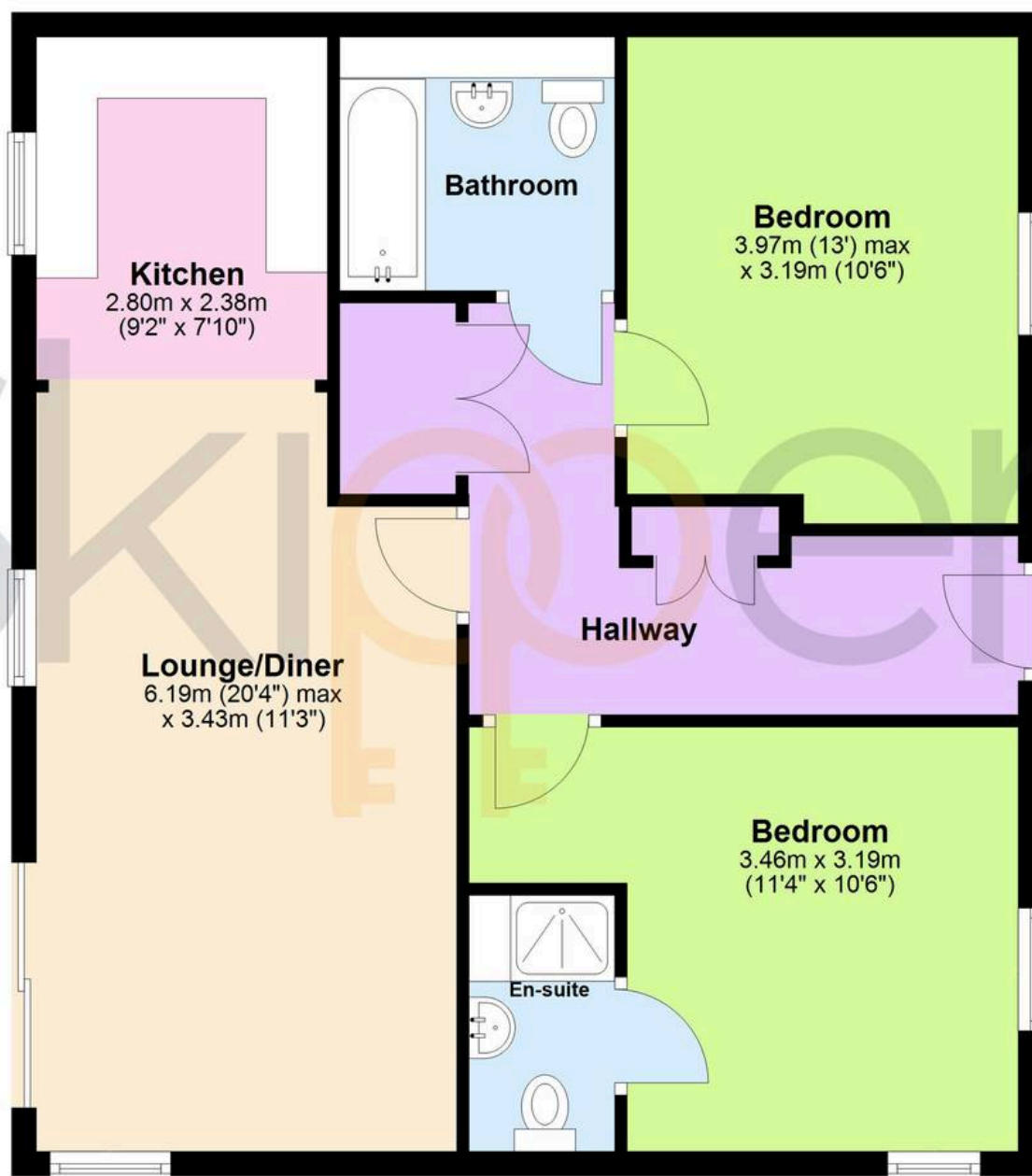
Family Bathroom

White suite comprising low level wc, pedestal wash hand basin with mixer tap and tiled splashback, panelled bath with mixer tap and shower attachment, locally walled tiled, extractor fan.

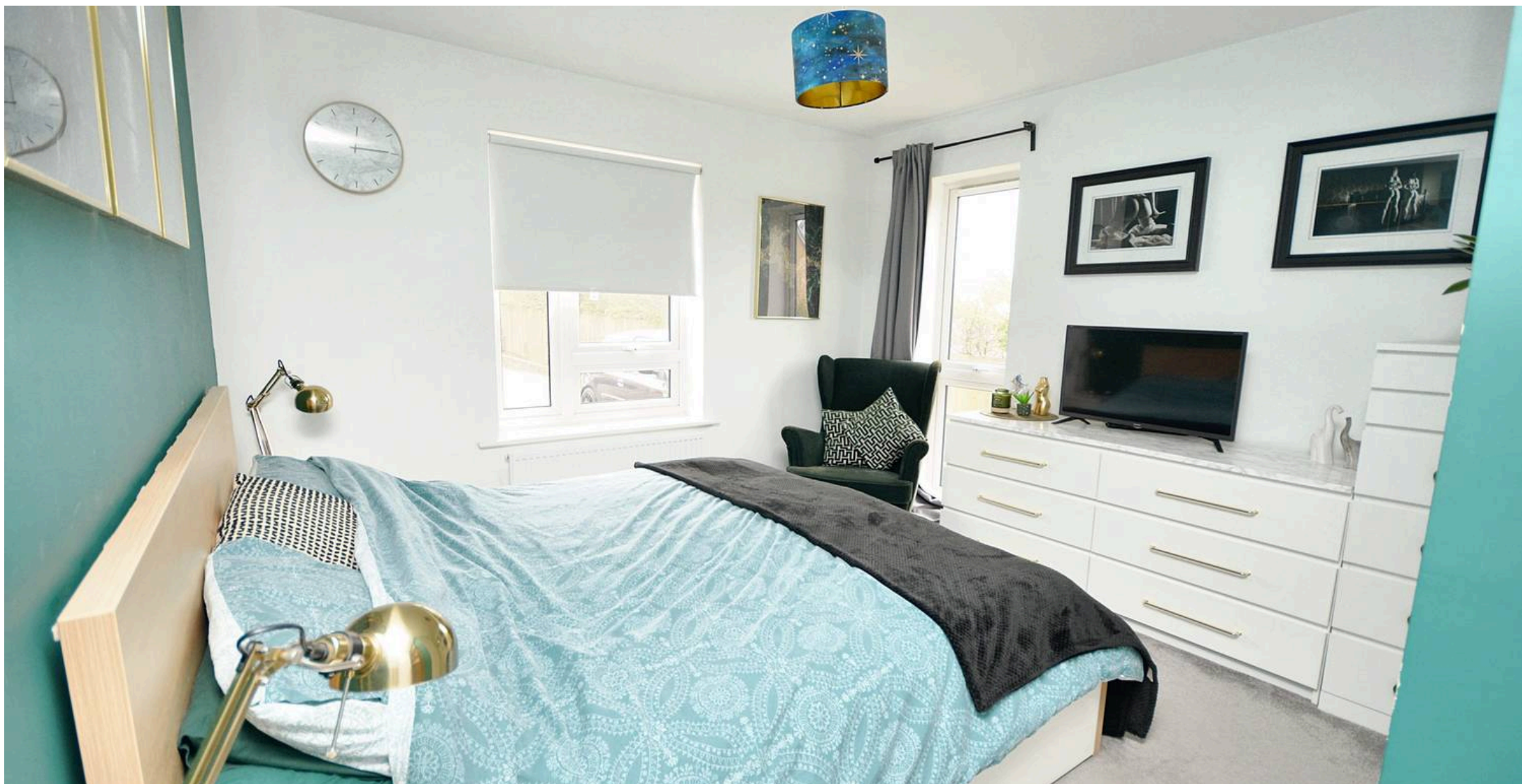


Ground Floor

Approx. 72.8 sq. metres (783.5 sq. feet)



Total area: approx. 72.8 sq. metres (783.5 sq. feet)



Skippers Estate Agents – Ashford

5 Kings Parade High Street, Ashford – TN24 8TA

01233 632383

ashford@skippers-ea.co.uk

skippers-ea.co.uk

Skippers

