



**80 Westernlea, Crediton, EX17 3JE**

Offers Over **£330,000**



# 80 Westernlea

Crediton, EX17 3JE

- Detached house in popular town edge location
- Three bedrooms with scope to extend
- Living room, dining room adjoining kitchen
- Off-road parking and large single garage
- South west facing rear garden
- Ground floor WC, upstairs bathroom
- Gas central heating (new boiler late 2022)
- uPVC double glazed doors and windows
- Being sold with no onward chain
- EPC: D

This lovely detached house is situated within a cul-de-sac on this popular development found on the western edge of Crediton, with bus transport links, great access for schools and rural walks close to hand – it's no wonder this location is so sought after.

The accommodation includes three bedrooms, served by a bathroom, a number of similar houses have extended above the garage to gain a 4th bedroom with en-suite, so this is possible here too, subject to permissions.

Downstairs we have a spacious living room with a large window and gas fire, sliding doors lead to the dining room, which adjoins the kitchen if the next owner wanted to create an open-plan kitchen diner in the future. There are integrated appliances including a Neff oven, hob and an extractor fan, plus a dishwasher, fridge and washing machine. There is scope and space to add a utility room if desired.







Off the entrance hall is a handy WC. There is mains gas central heating throughout, with a new Ideal boiler having been installed in late 2022. All doors and windows are uPVC double glazed too.

Outside: To the rear is an enclosed garden (10.2m x 10.2m) with paving immediately behind and then 6 steps up to a level lawn, with pretty and mature flower borders surrounding. There is a side access gate leading to the front where the driveway (7.7m x 5.5m) for 2-3 cars is found, adjacent to a front lawn. The garage has an electric key fob, light, power and rear door and window – Again there is scope to create additional living space if desired.

Please see the floorplan for room sizes.

Current Council Tax: Band D Mid Devon

Utilities: Mains gas, electric, water, telephone and broadband

Broadband within this postcode: Ultrafast 1000mbps

Drainage: Mains drainage

Heating: Mains gas central heating – New Ideal boiler late 2022

Listed: No

Conservation Area: No

Tenure: Freehold

### **Buyers' Compliance Fee Notice**

Please note that a compliance check fee of £25 (inc. VAT) per person is payable once your offer is accepted. This non-refundable fee covers essential ID verification and anti-money laundering checks, as required by law.



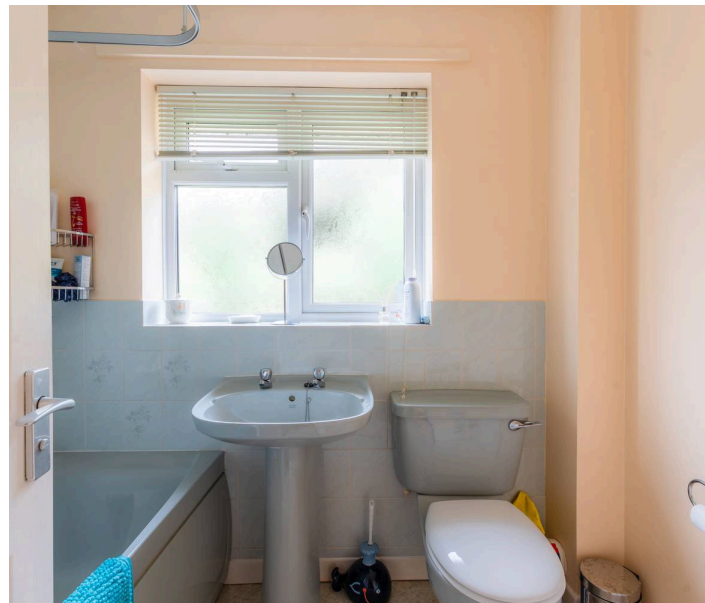




**CREDITON** is a vibrant market town with a bustling high street full of independent shops, eateries, and pubs. In recent years a diverse arts scene has grown to include all manner of mediums, with the performing arts making use of the town's market square where, in the summer months, a range of activities take place. The market square is also home to the town's twice-monthly farmer's market. The town has an equally significant past. It was originally the first Bishopric in Devon and the imposing Parish Church of The Holy Cross now stands where once stood Devon's first Saxon cathedral (909-1050AD). It is also the birthplace of Saint Boniface, one of the founding fathers of the Christian church in Europe. Easily commutable to Exeter and with two primary schools, a secondary school with sixth form as well as a wide range of necessary amenities, it's clear why the town is a firm favourite with locals and relocators alike.

**DIRECTIONS:** For Sat-Nav use EX17 3JE – No. 80 is tucked at the top of a cul-de-sac, marked by a Helmores Board.

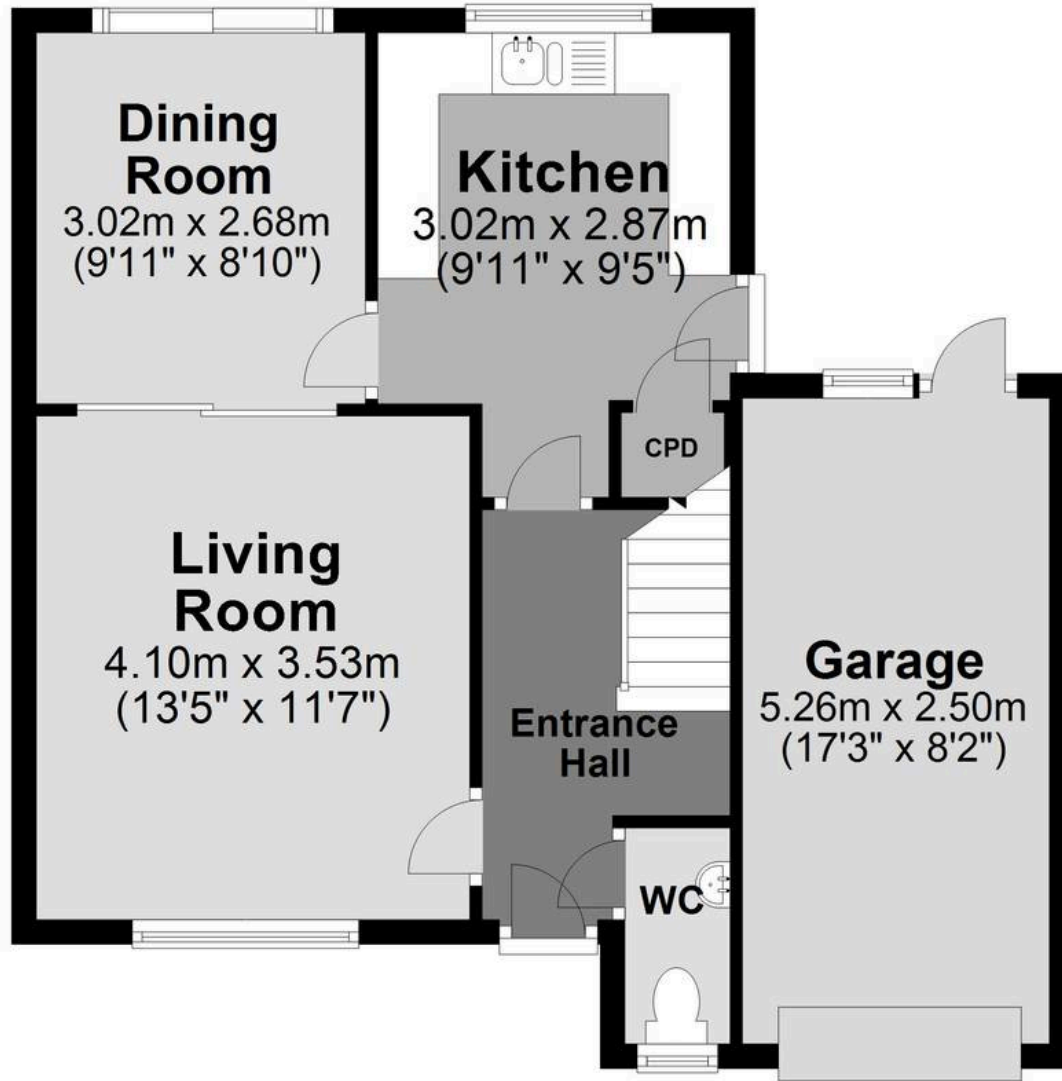
**What3Words:** [///push.centuries.regrowth](https://www.what3words.com/?q=///push.centuries.regrowth)





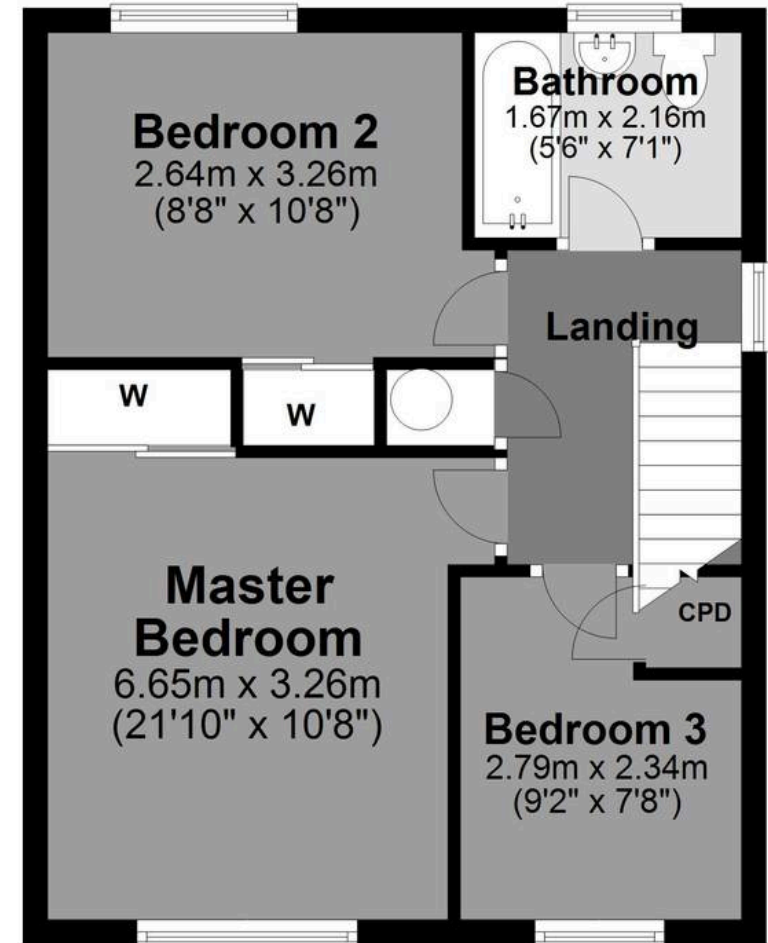
## Ground Floor

Approx. 41.7 sq. metres (448.5 sq. feet)



## First Floor

Approx. 44.8 sq. metres (482.6 sq. feet)



Total area: approx. 86.5 sq. metres (931.1 sq. feet)





## Helmores

Helmores, 111-112 High Street - EX17 3LF

01363 777 999

[property@helmores.com](mailto:property@helmores.com)

[helmores.com/](http://helmores.com/)

These particulars are intended to give a fair and reliable description of the property but no responsibility for any inaccuracy or error can be accepted and do not constitute an offer or contract. We have not tested any services or appliances (including central heating if fitted) referred to in these particulars and the purchasers are advised to satisfy themselves as to the working order and condition. If a property is unoccupied at any time there may be reconnection charges for any switched off/disconnected or drained services or appliances - All measurements are approximate.