



Second Floor Ingouville Apts, Ingouville Lane, St. Helier, Jersey

£505,000

**BROADLANDS**

FINDING YOU A HOME SINCE 1972



## Second Floor Ingouville Apartments, Ingouville Lane

St. Helier, Jersey

- Brand new modern development
- 8 x 2 bedroom apartments within the block
- Lift access to all floors
- Cafes and restaurants on your doorstep
- 2 large communal roof top terraces
- Electric charge points and bike storage
- Contact [angela@broadlandsjersey.com](mailto:angela@broadlandsjersey.com) or 07829 900010





## Second Floor Ingouville Apartments, Ingouville Lane

St. Helier, Jersey

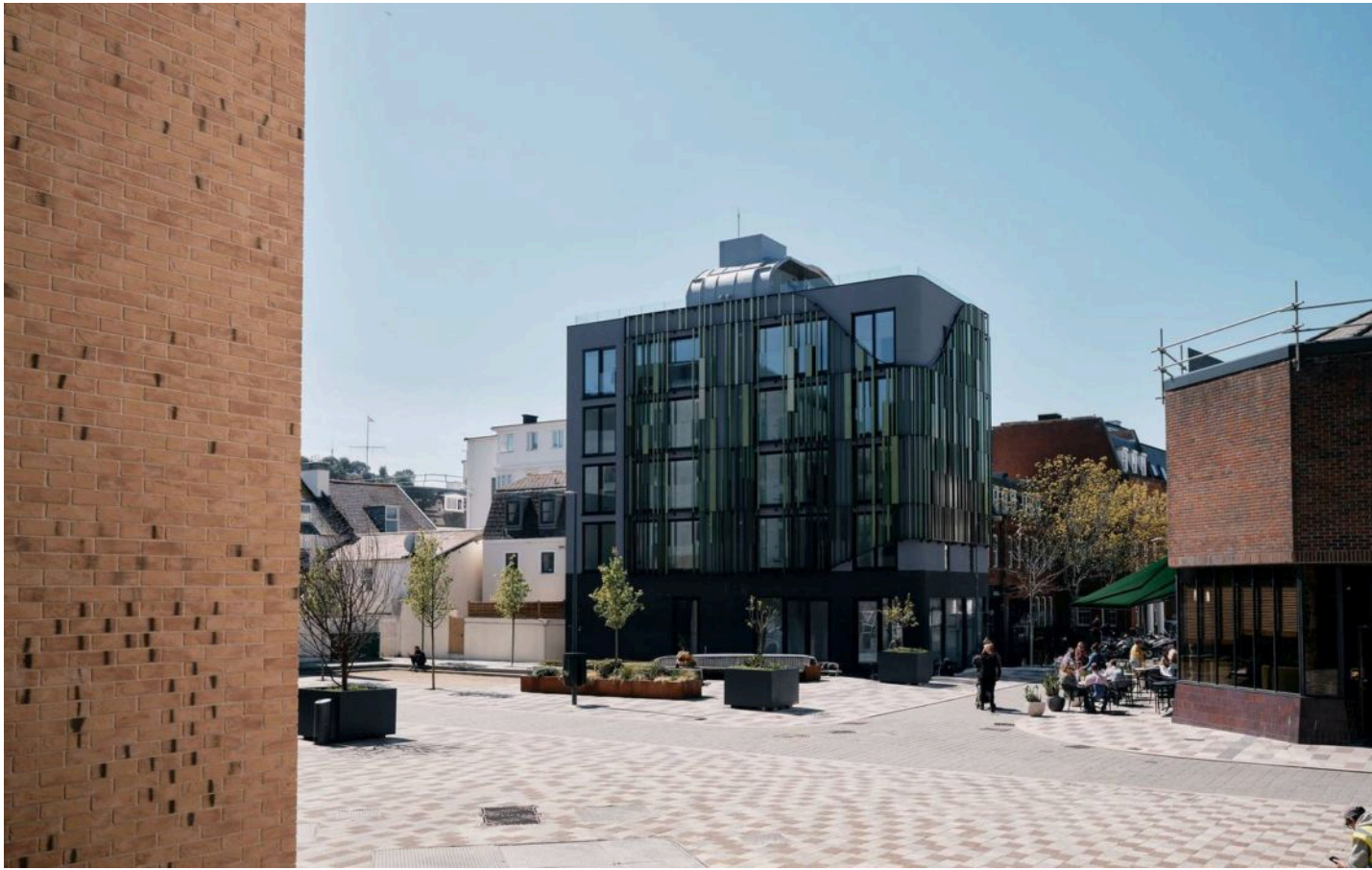
Discover an unparalleled opportunity to own a stylish two-bedroom apartment in a dynamic new development featuring just eight exclusive residences. This urban retreat offers meticulously crafted living spaces, promising a blend of modernity and luxury.

Step into the spacious living area adorned with Juliet balconies, creating an inviting atmosphere from the moment you enter. The well-appointed kitchen combines functionality with elegance, complete with state-of-the-art appliances.

Benefit from convenient amenities such as lift access to all floors, a dedicated bike storage area with electric charging points, and a welcoming communal roof terrace perfect for social gatherings or quiet relaxation. Seize this opportunity to secure a stylish retreat in the heart of St. Helier.







### **Living**

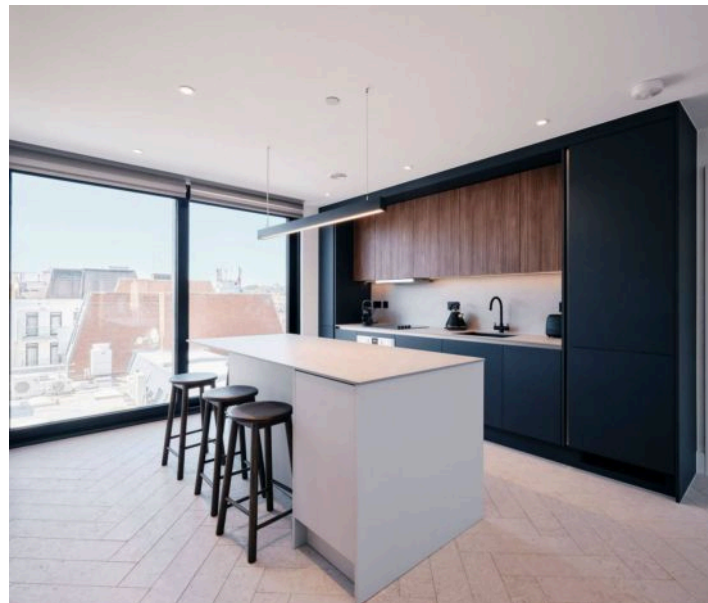
Open plan kitchen/ sitting / dining room.

### **Sleeping**

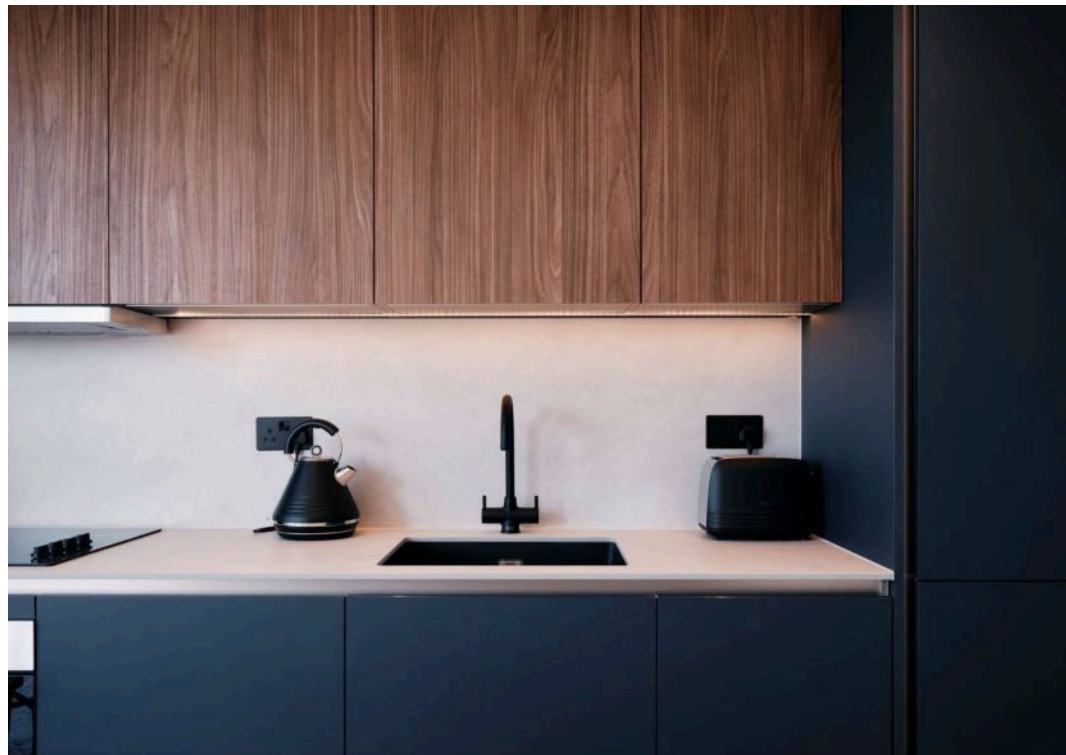
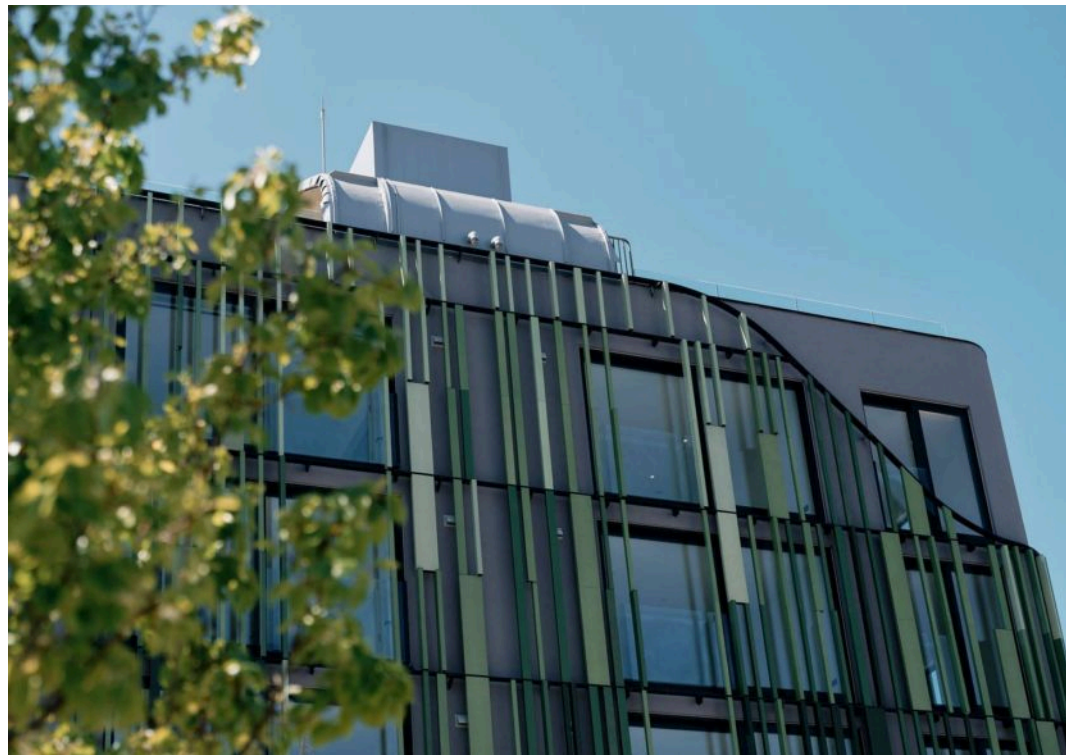
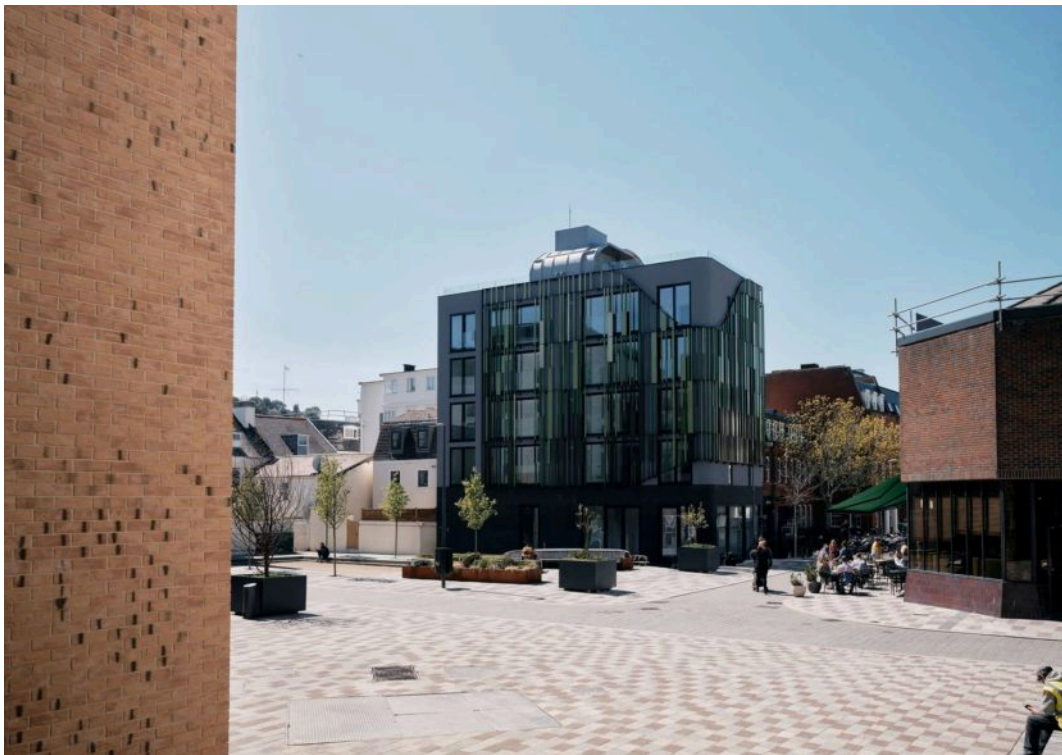
2 double bedrooms (one with fitted wardrobe space).

### **Services**

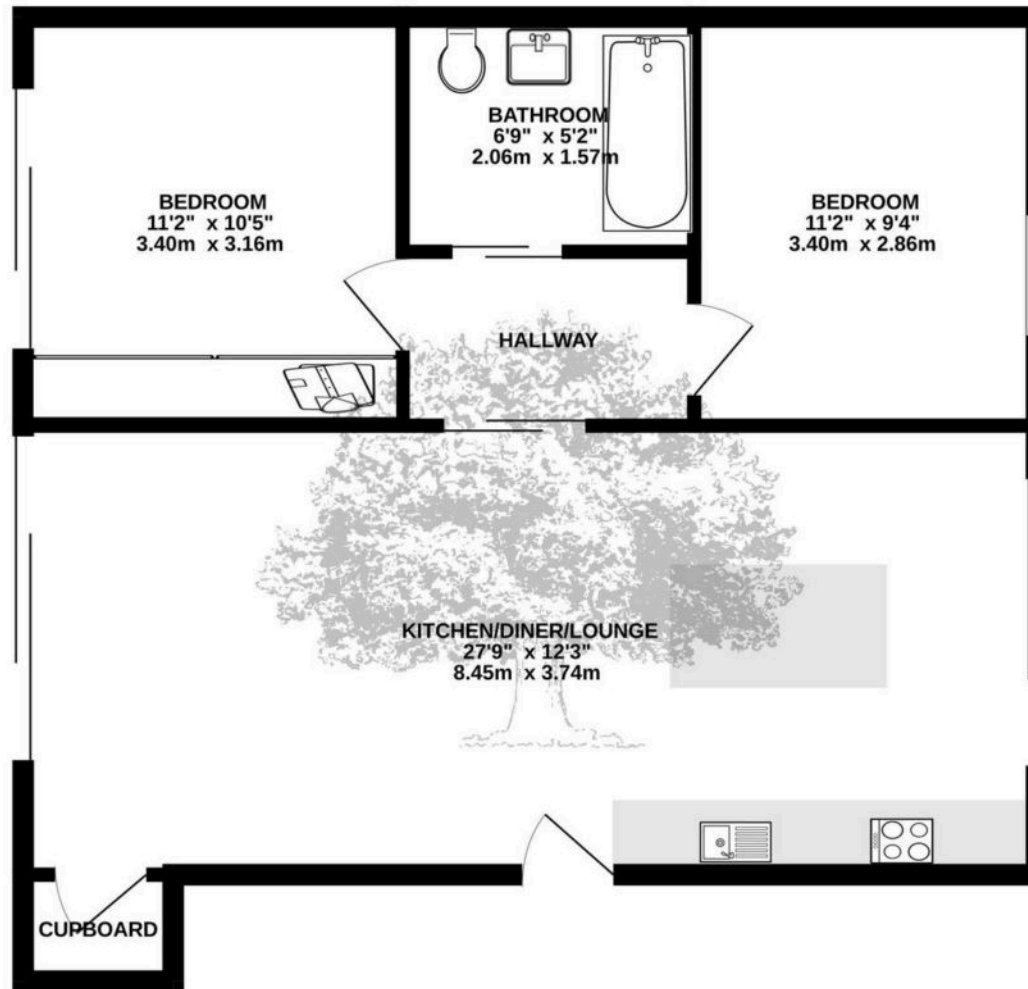
Mains drains and water. Electric heating throughout. Lift access. Service charge TBC. Flying Freehold.







662 sq.ft. (61.5 sq.m.) approx.



TOTAL FLOOR AREA : 662 sq.ft. (61.5 sq.m.) approx.

Whilst every attempt has been made to ensure the accuracy of the floorplan contained here, measurements of doors, windows, rooms and any other items are approximate and no responsibility is taken for any error, omission or mis-statement. This plan is for illustrative purposes only and should be used as such by any prospective purchaser. The services, systems and appliances shown have not been tested and no guarantee as to their operability or efficiency can be given.  
Made with Metropix ©2025





## Broadlands

Broadlands Estates, Library Place - JE2 3NL

01534 880770 • [enquiries@broadlandsjersey.com](mailto:enquiries@broadlandsjersey.com) • [www.broadlandsjersey.com/](http://www.broadlandsjersey.com/)

# BROADLANDS

FINDING YOU A HOME SINCE 1972