



Moss House Court, Mosborough

Sheffield

£150,000





## Moss House Court

Mosborough, Sheffield

Council Tax band: B

Tenure: Leasehold

- No chain
- First Floor Apartment
- Open Plan Modern Living
- Own Private Entrance
- Elevated Position
- Close To The Heart of Mosborough
- Modern Stylish Kitchen, Including Integrated Appliances
- Juliette Balcony to Lounge



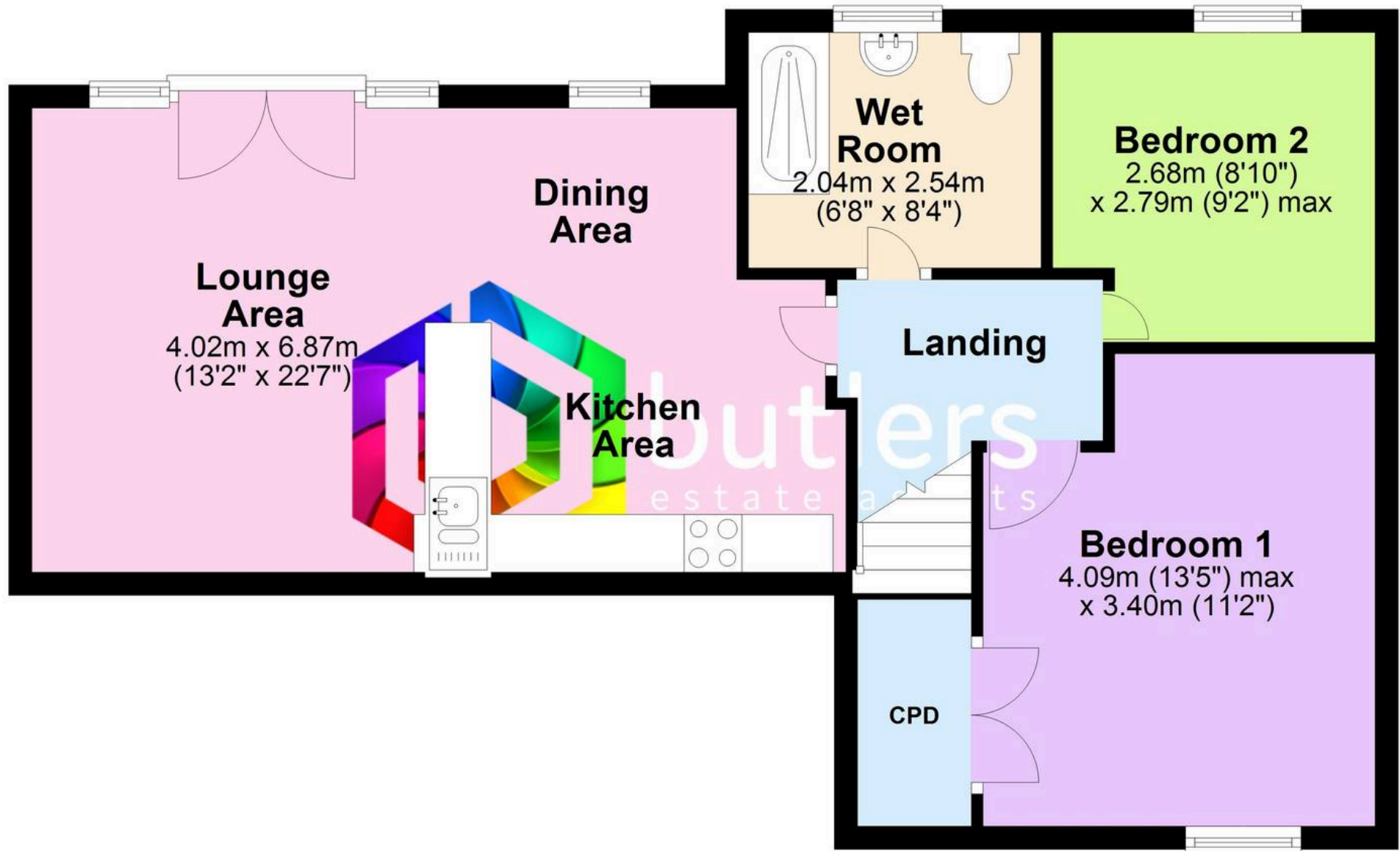






## Ground Floor

Approx. 60.2 sq. metres (647.6 sq. feet)



Total area: approx. 60.2 sq. metres (647.6 sq. feet)



BUTLERS ESTATE AGENTS

60 High Street

Mosborough

SHEFFIELD

S20 5AE

Telephone 0114 247 4433

[info@butlers.co.uk](mailto:info@butlers.co.uk)