



**The Farm, Purton – SN5 4GE**  
Wiltshire

Guide Price **£315,000**

**mcfarlane**  
property.com



## The Farm

- Three bedroom Family Home
- Flexible Accommodation Over Three Floors
- Sought After Cul-De-Sac
- Modern & Contemporary
- Altered Kitchen / Breakfast Room
- Ground Floor Cloakroom
- VIEWING RECOMMENDED

Beautifully positioned and presented Three Bedroom Family Home in sought after West Swindon location.

Presented over Three Floors with an altered Kitchen Breakfast Room Plus ground Floor Cloakroom and seperate Living Room.

To the First Floor Two Bedrooms and Family Bathroom.

Second Floor boasts Generous Master Bedroom with Ensuite.

The Rear Garden is designed with a low maintenance feel.

Allocated Parking Two Cars to Front.

VIEWING ADVISED.





# The Farm

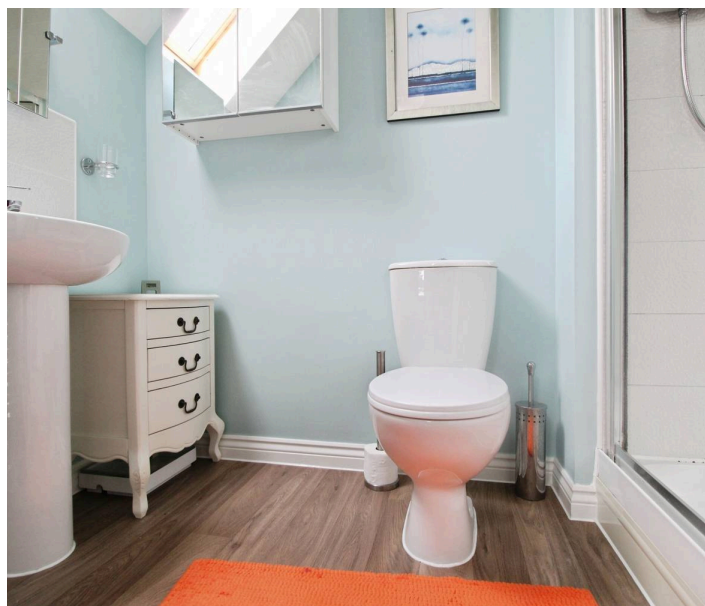
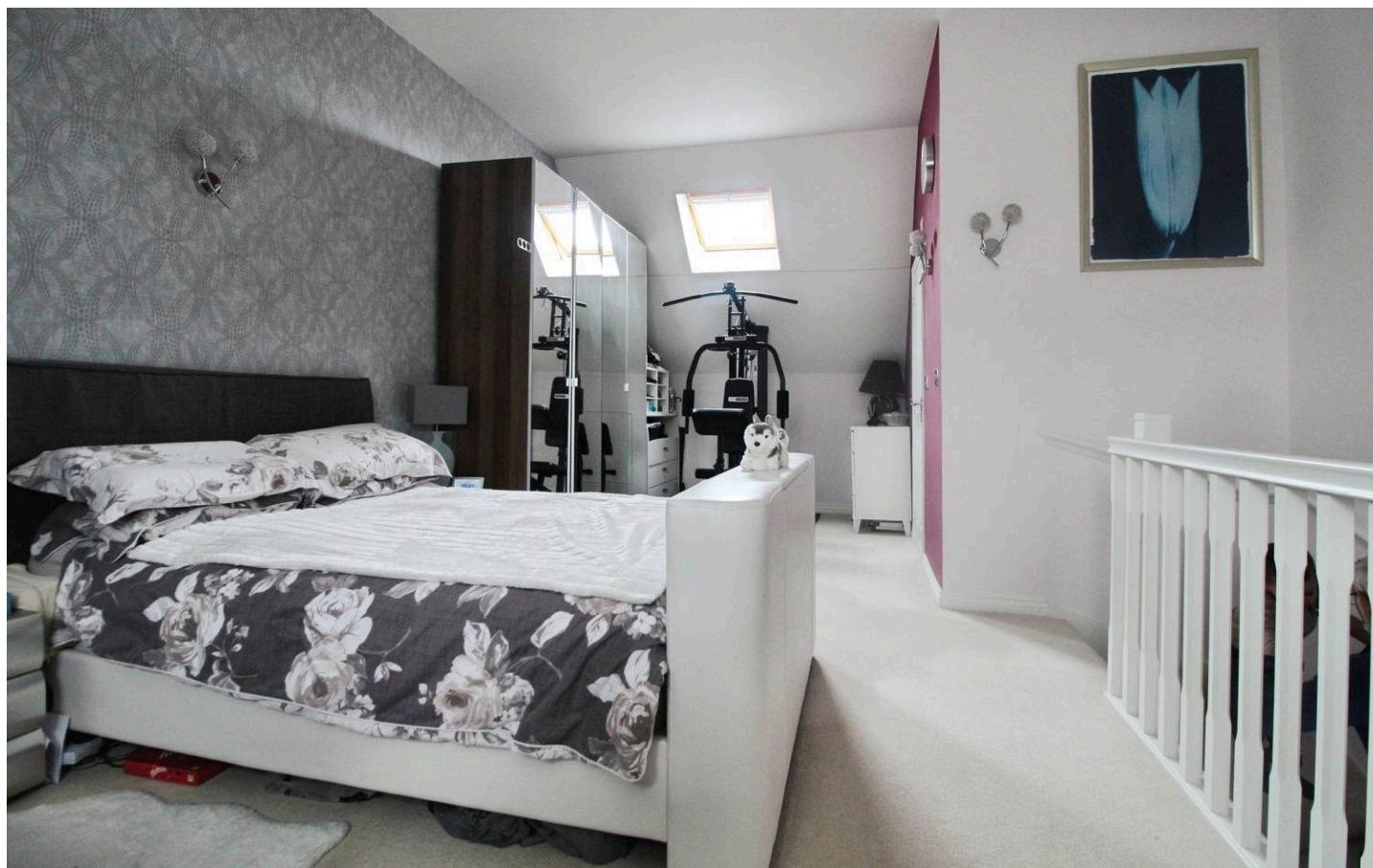
West Swindon

Council Tax band: D

Tenure: Freehold

EPC Energy Efficiency Rating: B

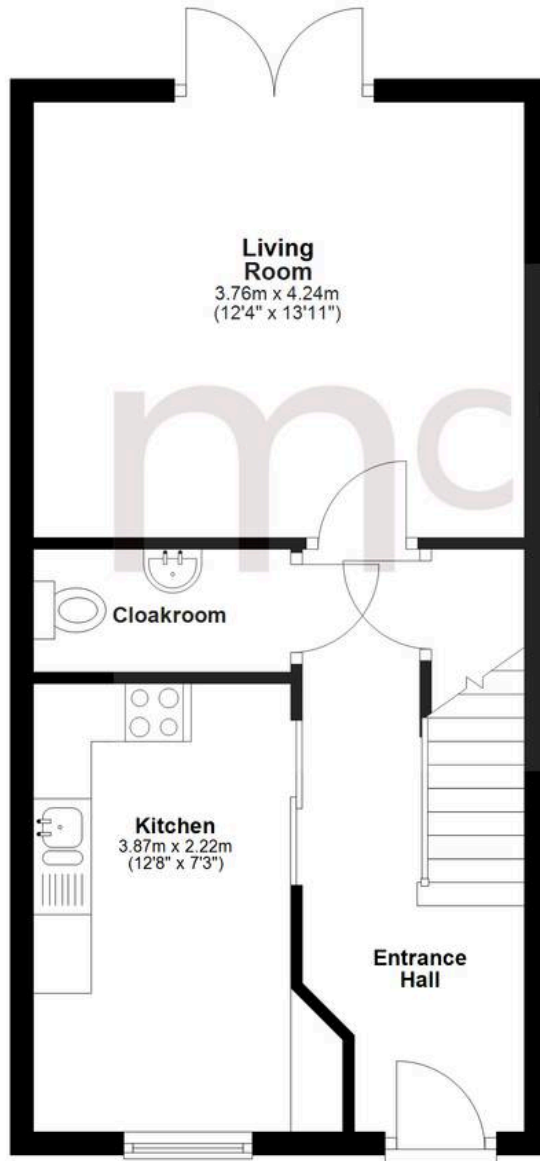
EPC Environmental Impact Rating: B



mcfarlane  
property.com

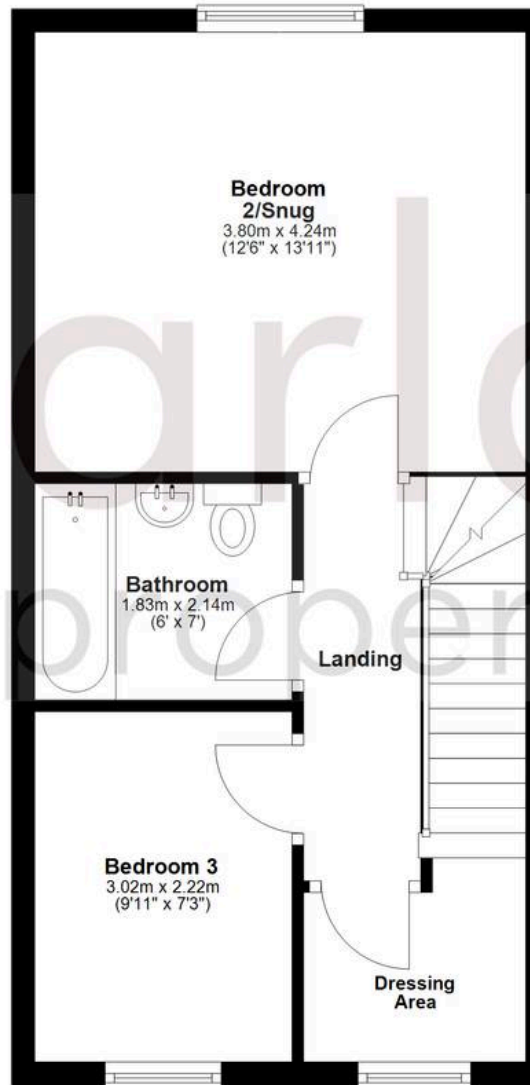
## Ground Floor

Approx. 37.3 sq. metres (401.6 sq. feet)



## First Floor

Approx. 37.5 sq. metres (403.2 sq. feet)



## Second Floor

Approx. 29.2 sq. metres (313.9 sq. feet)



Agents Note: Whilst every care has been taken to prepare these sales particulars, they are for guidance purposes only. All measurements are approximate and for general guidance purposes only and whilst every care has been taken to ensure their accuracy, they should not be relied upon and potential buyers are advised to recheck the measurements.

Total area: approx. 103.9 sq. metres (1118.7 sq. feet)