



**The Woodcote, Farrier Street, Blunsdon**  
Swindon

**£495,000**





## The Woodcote, Farrier Street

Blunsdon, Swindon

Discover a true gem in the property market with this 4 Bedroom Detached House, a **DISTINCTIVE NEW HOME** that exudes modern sophistication and luxury living. Presenting the **LAST PLOT** on this esteemed development, this residence is a masterpiece of contemporary design. Step inside and be captivated by the grandeur of the **GOLD RANGE KITCHEN** boasting top-of-the-line integrated appliances, perfect for culinary enthusiasts. The **DUAL ASPECT KITCHEN/FAMILY ROOM** and **LOUNGE** are bathed in natural light, offering a seamless flow for entertaining. Hosting guests is a pleasure with a separate **DINING ROOM**, while the **UTILITY ROOM** and **WC** provide practical convenience. Unwind in the opulent **MASTER SUITE** with a **DRESSING ROOM** and lavish **EN-SUITE**, complemented by three additional bedrooms and a chic family bathroom. Completing this picture-perfect home is a **SINGLE GARAGE** and **TWO PARKING SPACES**, ensuring both style and convenience for the discerning buyer. The **OUTSIDE SPACE** offers a seamless extension of the interior living spaces, ideal for creating unforgettable memories with family and friends.

This property is Freehold but there are additional legal elements to this property you are responsible for the management charges. You may also incur fees for such as Management packs. You must therefore consult with your legal representatives on these matters at the earliest opportunity before making a decision to purchase.\*Stamp duty contribution if buying as an additional property will be considered.





### Entrance Hall

### Lounge

11' 10" x 17' 9" (3.60m x 5.40m)

### Kitchen / Family

16' 1" x 13' 1" (4.90m x 4.00m)

### Dining

11' 2" x 11' 6" (3.40m x 3.50m)

### Utility

### WC

### Landing

### Bedroom 1

11' 10" x 13' 5" (3.60m x 4.10m)

### En-suite

### Dressing

### Bedroom 2

9' 2" x 13' 1" (2.80m x 4.00m)

### Bedroom 3

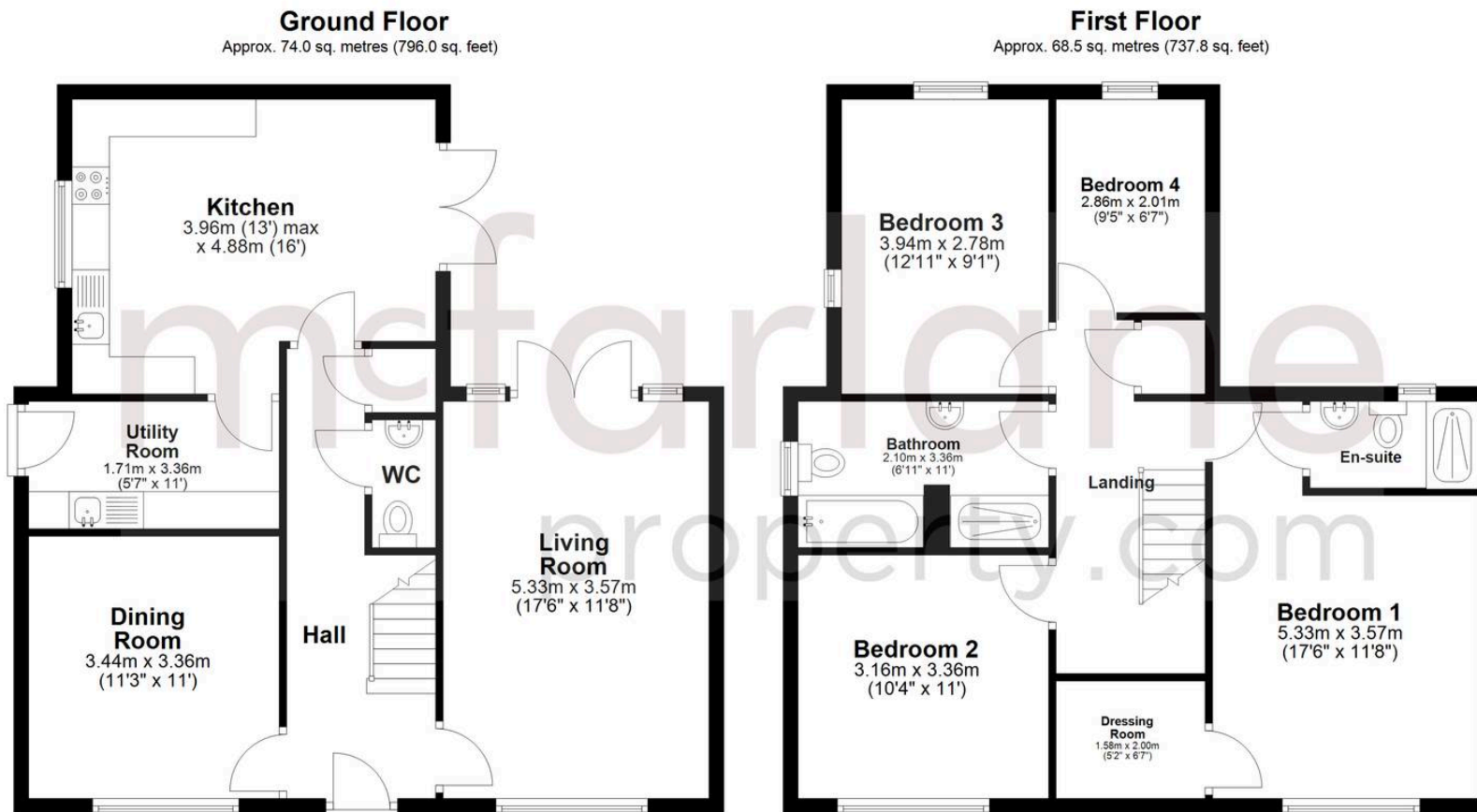
11' 2" x 10' 6" (3.40m x 3.20m)

### Bedroom 4

6' 7" x 9' 6" (2.00m x 2.90m)

### Bathroom





Total area: approx. 142.5 sq. metres (1533.8 sq. feet)

## McFarlane Sales & Lettings

North Swindon, Redhouse Village Centre, Swindon – SN25 2FW

01793 296600 • [swindon@mcfarlaneproperty.com](mailto:swindon@mcfarlaneproperty.com) • [www.mcfarlaneproperty.com/](http://www.mcfarlaneproperty.com/)