



jones-homes.co.uk/gateford-park

Gateford Park

Gateford, Worksop



Exclusively Jones since 1959

Jones Homes has built an enviable reputation as one of the leading builders of character houses in sought-after locations. By embracing new products and techniques, we're able to offer quality homes with the latest styles, layouts and interior specifications.

But we go further than just building homes. At the heart of everything we do lies an unwavering commitment to exceptional customer care. From the moment you make a first enquiry to long after you move in, you can rely on our friendly team to deliver a high standard of service, choice and value.

We're also dedicated to protecting and improving your environment, which is why we pledge to continue refurbishing older buildings and developing landscaping schemes into the future.





Live the
luxury lifestyle

Built with you in mind



Luxury living is about having it all

If you dream of living in a beautiful home, with a high quality interior in a sought-after location, it can all be yours at Gateford Park.

This stunning development offers a range of 4 & 5 bedroom detached homes. From young professionals to growing families or even those looking to down size but still requiring a spacious well served home.

Traditionally designed with modern living in mind, the light and airy interiors offer plenty of space to work, play and relax in style whilst the variety of external finishes gives each home character and identity, appealing to everyone.

Located just a mile north-west of the historic town of Worksop, lies the popular residential area of Gateford. With easy access to major motorway links, Gateford Park is well connected to a variety of destinations.



Perfecting every last detail

Each and every Jones home is highly designed and specified throughout.

At Gateford Park you'll find a contemporary kitchen with integrated appliances, and modern bathrooms with showers, low profile shower trays and a choice of stunning wall and floor tiles.

Many more quality fixtures and fittings are also included as standard. From the LED downlights to the polished chrome door handles, we consider every last detail to be important. And it's not just the interior of your new home that we're committed to getting just right.

We've given equal care and attention to the landscaping around Gateford Park to help preserve and improve the natural environment.



Built with you in mind

The perfect location

The perfect place to call home. Gateford Park is ideal for those looking for the best of both worlds. This stunning development benefits from a picturesque location whilst offering easy access to an extensive range of local amenities in the neighbouring town of Worksop.



Canch Park



Worksop Town Centre



Worksop Priory

Built with you in mind

A place to suit every lifestyle

Situated on the outskirts of Worksop, Gateford is close to open countryside and has the nearby National Trust Clumber Park which is a beautiful expanse of parkland, heath and woods covering more than 3,800 acres and offers many leisure activities.

The royal Sherwood Forest, made famous by the legend of Robin Hood, is also within easy reach and has events and activities throughout the year.

Neighbouring Worksop offers everything you need for modern living with a choice of restaurants, cafés and bars, a variety of sporting clubs to enjoy and many shops including the Priory Shopping Centre. Gateford itself is only half an hour away from Sheffield's leading shopping and leisure destination Meadowhall, which offers an array of designer and high street shops.

For professionals looking to commute, Gateford is well located to main motorway links with close access to the M1 and A1(M), also with two local train stations Gateford is well connected to many major destinations. And for families, there are a number of primary and secondary schools nearby.

Local Countryside



Built with you in mind

Homes built with pride

With over 60 years' experience building individual houses in locations as desirable as Gateford, you can trust Jones Homes to create your perfect new home.

As one of the leading builders of quality new homes, we take great pride in our exceptional standards of design, construction and specification. From the quality of our materials to the well considered layouts, every new development is the best it can possibly be.

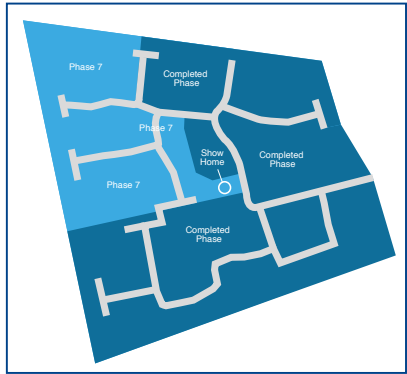
It's just one of the reasons we're consistently recognised in industry awards. But the real proof of our success is the fact that so many families choose to stay and move up with us over the years.








Site layout
at Gateford Park



These details are prepared for the guidance of prospective purchasers and do not form part of any contract, purchasers are required to rely on deed plans for full boundary details. Jones Homes reserve the right to vary details and specification from time to time as may be necessary.



Phase 7

-  **The Banbury**
4 bedroom detached home
-  **The Bayswater**
4 bedroom detached home
-  **The Barbridge**
4 bedroom detached home
-  **The Bentley**
4 bedroom detached home
-  **The Latchford II**
5 bedroom detached home

Specification

General

White gloss architrave, skirting and smooth white plastered ceiling	The Banbury	The Bayswater	The Barbridge	The Bentley	The Latchford II
Choice of three paint colours*
White gloss painted 2 panel doors with chrome furniture
Oak handrail with newel posts and spindles painted in white gloss to stairs
White power points and light switches to all rooms
TV and Virgin Media points to living room and bedroom 1 & 2
TV point to family/dining area and study+
Telephone point to kitchen, understairs cupboard, study+ and bedroom 1
Gas point to living room
Gas fired central heating with energy efficient boiler
Thermostatic controlled radiator valves+
Energy saving insulation to cavity walls and roof space
Mains powered smoke detectors with battery back up to both floors
Battery operated carbon monoxide detector
White PVCu French doors
White aluminium bi-fold doors
Chrome wired door bell with internal white chime
Texecom wired burglar alarm system
NHBC Buildmark cover

External

Turfed rear garden with paved area and landscaped front garden	The Banbury	The Bayswater	The Barbridge	The Bentley	The Latchford II
Tarmac driveway
1800mm fencing to the rear garden with coordinating gate
Canopy downlight to front door
Garage with colour coordinating door**, power and light
Remote controlled electric up and over door to double garage+

Kitchen

Choice of Symphony kitchen* with coordinating worktop and upstand	The Banbury	The Bayswater	The Barbridge	The Bentley	The Latchford II
Reginox stainless steel sink and drainer with Hansgrohe taps
Integrated fridge-freezer, stainless steel hob & splash back and double oven†
Integrated dishwasher
Plumbing and power provided for dishwasher and washing machine
LED lighting to kitchen wall units+
LED ceiling downlighters to kitchen area in a choice of finish*

Bathroom/En Suite

Modern bathroom suite in white with Vitra sanitaryware with chrome fittings and Hansgrohe taps	The Banbury	The Bayswater	The Barbridge	The Bentley	The Latchford II
Aqualisa shower cubicle to bathroom and Aqualisa smart shower with remote switch to en suites
Aqualisa shower cubicle to bathroom and en suite
Vanity unit to wash hand basin recess with choice of worktop* and fitted mirror to en suite
Shaver point to bathroom and en suite
Chrome heated ladder towel rail to bathroom and en suite/s+
Fully tiled floors in a choice of tiles from Porcelanosa*
Half tiled walls in a choice of tiles from Porcelanosa*
LED ceiling downlighters in a choice of finish*

+Where applicable, please refer to working drawings. *Where a choice is stated it will be from our standard range and will be subject to the build stage of your chosen plot. †Brand will vary from semi-detached to detached housetypes. **As per street scene. Elevational treatments are indicative and not plot specific. Please ask Sales Advisor for more details.



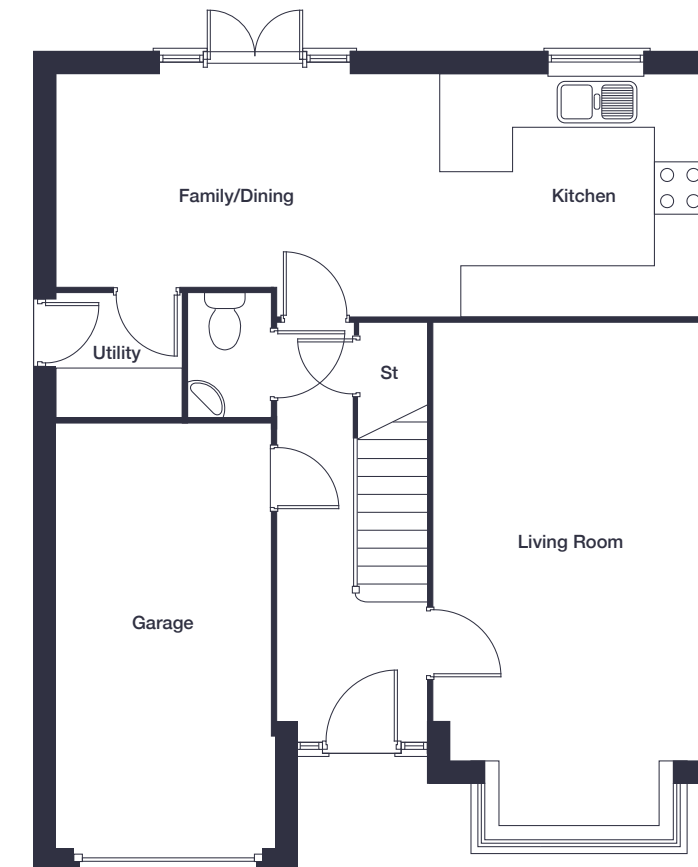
at Gateford Park

The Banbury

4 bedroom
detached home

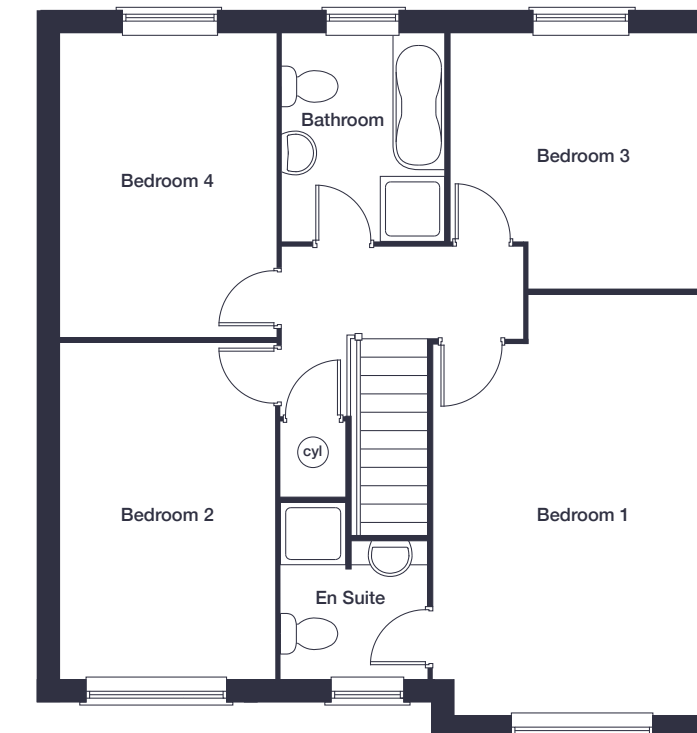
jones-homes.co.uk/gateford-park

Built with you in mind



Ground Floor

Living Room	6.15m x 3.34m	20'2" x 10'11"
Kitchen/Family/Dining	8.20m x 2.94m	26'11" x 9'8"
Garage	5.36m x 2.66m	17'7" x 8'9"



First Floor

Bedroom 1	5.21m x 3.41m	17'1" x 11'2"
Bedroom 2	4.15m x 2.79m	13'8" x 9'2"
Bedroom 3	3.21m x 3.19m	10'6" x 10'5"
Bedroom 4	3.79m x 2.79m	12'6" x 9'2"

These floor plans and images are for guidance and illustrative purposes only and do not form part of any contract. All room sizes are approximate to maximum dimensions and some plots may be subject to additional gable or bay windows. Please ask our Sales Advisor for details on specification and plot specific street scenes. Every effort has been taken to ensure these plans are as accurate as possible at time of printing. However, Jones Homes reserves the right to vary details as may be necessary and without notice.



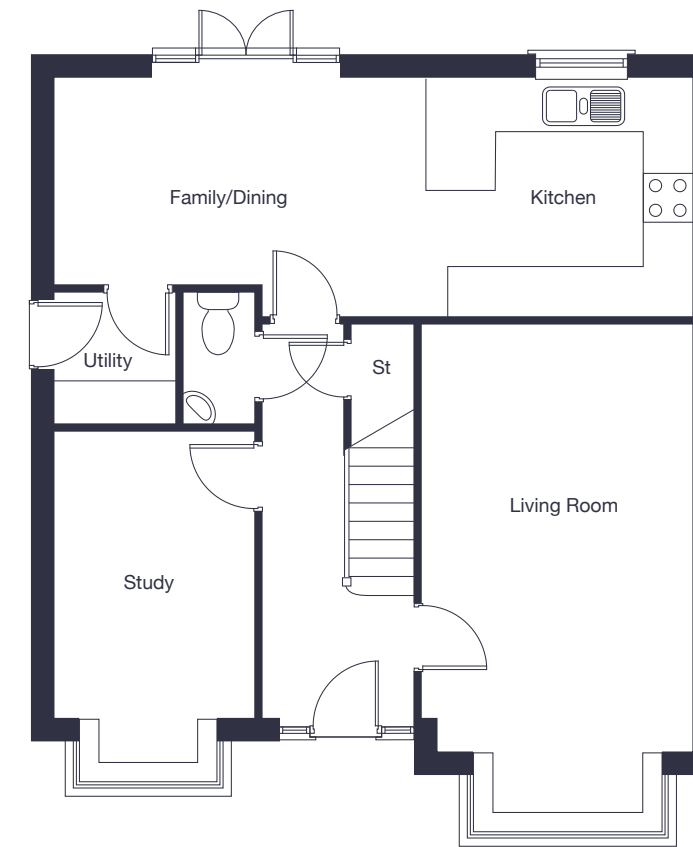
at Gateford Park

The Bayswater

4 bedroom
detached home

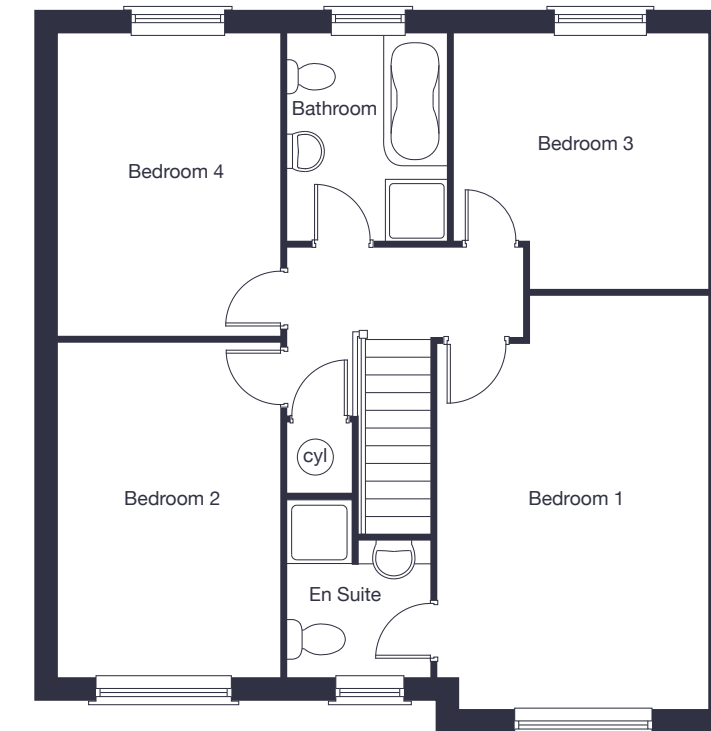
jones-homes.co.uk/gateford-park

Built with you in mind



Ground Floor

Living Room	6.15m x 3.34m	20'2" x 10'11"
Kitchen/Family/Dining	8.05m x 2.94m	26'5" x 9'8"
Study	4.16m x 2.51m	13'8" x 8'3"
Detached Single Garage	5.75m x 2.62m	18'10" x 8'7"



First Floor

Bedroom 1	5.21m x 3.41m	17'1" x 11'2"
Bedroom 2	4.16m x 2.64m	13'8" x 8'8"
Bedroom 3	3.21m x 3.19m	10'6" x 10'5"
Bedroom 4	3.80m x 2.64m	12'6" x 8'8"

These floor plans and images are for guidance and illustrative purposes only and do not form part of any contract. All room sizes are approximate to maximum dimensions and some plots may be subject to additional gable or bay windows. Please ask our Sales Advisor for details on specification and plot specific street scenes. Every effort has been taken to ensure these plans are as accurate as possible at time of printing. However, Jones Homes reserves the right to vary details as may be necessary and without notice.



at Gateford Park

The Barbridge

4 bedroom
detached home

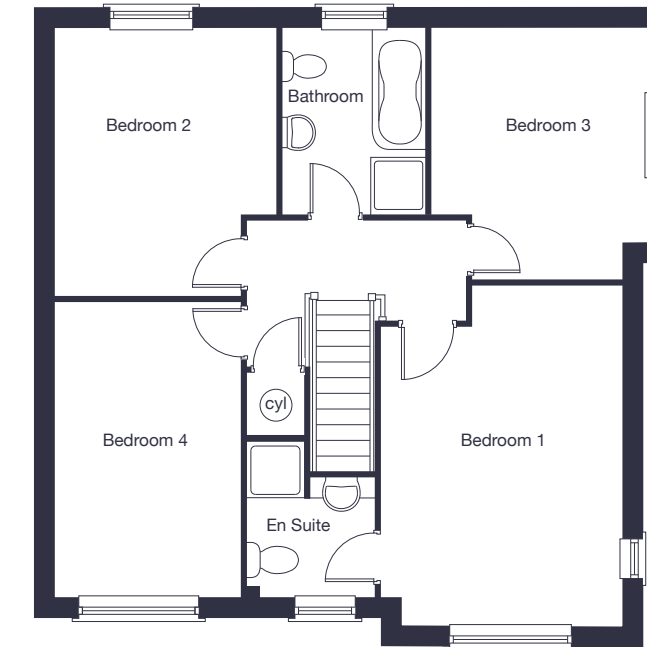
jones-homes.co.uk/gateford-park

Built with you in mind



Ground Floor

Living Room	6.15m x 3.34m	20'2" x 10'11"
Kitchen/Family/Dining	8.40m x 3.24m	27'7" x 10'8"
Garden Room	3.69m x 3.14m	12'1" x 10'4"
Study	3.51m x 2.50m	11'6" x 8'3"
Detached Single Garage	5.64m x 2.62m	18'6" x 8'7"



First Floor

Bedroom 1	4.86m x 3.40m	15'11" x 11'2"
Bedroom 2	3.79m x 3.13m	12'6" x 10'3"
Bedroom 3	3.54m x 3.04m	11'8" x 10'0"
Bedroom 4	4.15m x 2.64m	13'8" x 8'8"

These floor plans and images are for guidance and illustrative purposes only and do not form part of any contract. All room sizes are approximate to maximum dimensions and some plots may be subject to additional gable or bay windows. Please ask our Sales Advisor for details on specification and plot specific street scenes. Every effort has been taken to ensure these plans are as accurate as possible at time of printing. However, Jones Homes reserves the right to vary details as may be necessary and without notice.



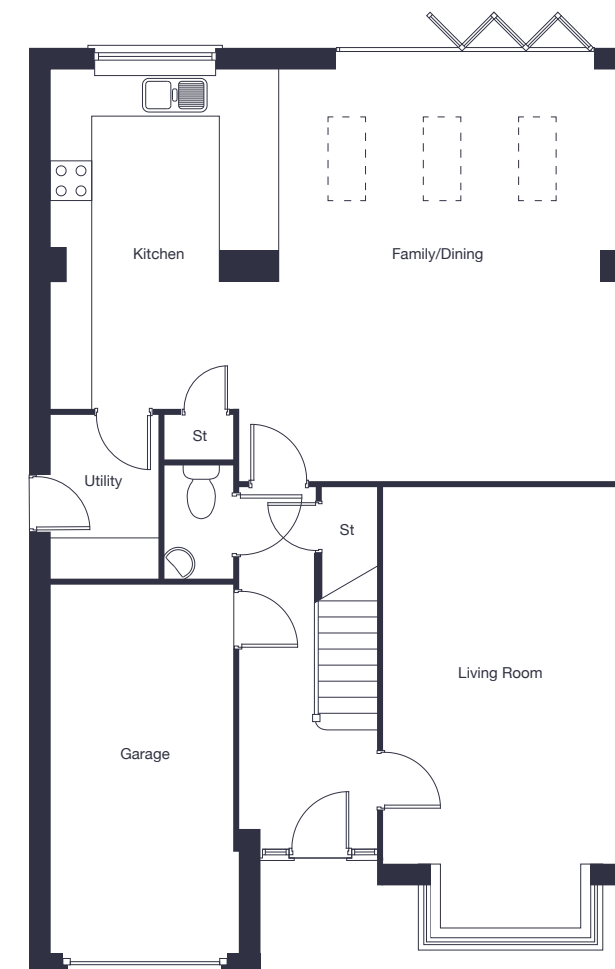
at Gateford Park

The Bentley

4 bedroom
detached home

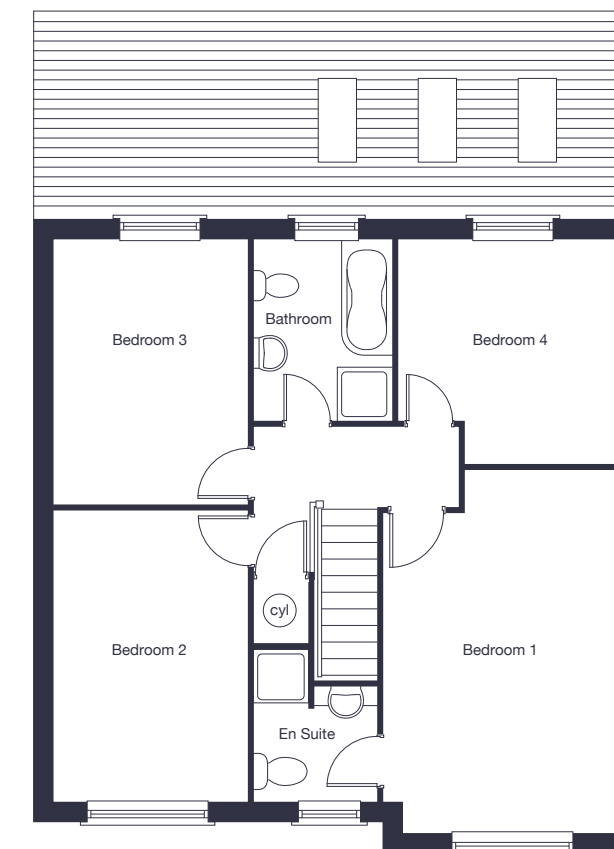
jones-homes.co.uk/gateford-park

Built with you in mind



Ground Floor

Living Room	6.15m x 3.34m	20'2" x 10'11"
Kitchen/Family/Dining	8.20m x 5.94m	26'11" x 19'6"
Garage	5.36m x 2.66m	17'7" x 8'9"



First Floor

Bedroom 1	5.20m x 3.40m	17'1" x 11'2"
Bedroom 2	4.15m x 2.79m	13'8" x 9'2"
Bedroom 3	3.80m x 2.79m	12'6" x 9'2"
Bedroom 4	3.19m x 3.18m	10'6" x 10'5"

--- Skylights

These floor plans and images are for guidance and illustrative purposes only and do not form part of any contract. All room sizes are approximate to maximum dimensions and some plots may be subject to additional gable or bay windows. Please ask our Sales Advisor for details on specification and plot specific street scenes. Every effort has been taken to ensure these plans are as accurate as possible at time of printing. However, Jones Homes reserves the right to vary details as may be necessary and without notice.



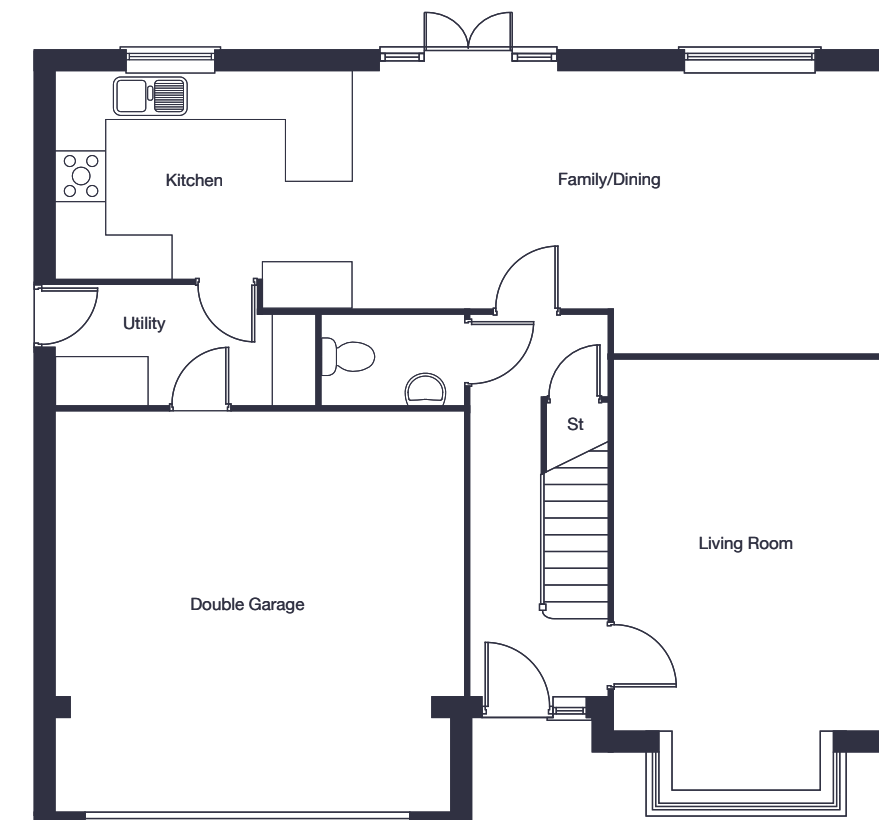
at Gateford Park

The Latchford II

5 bedroom
detached home

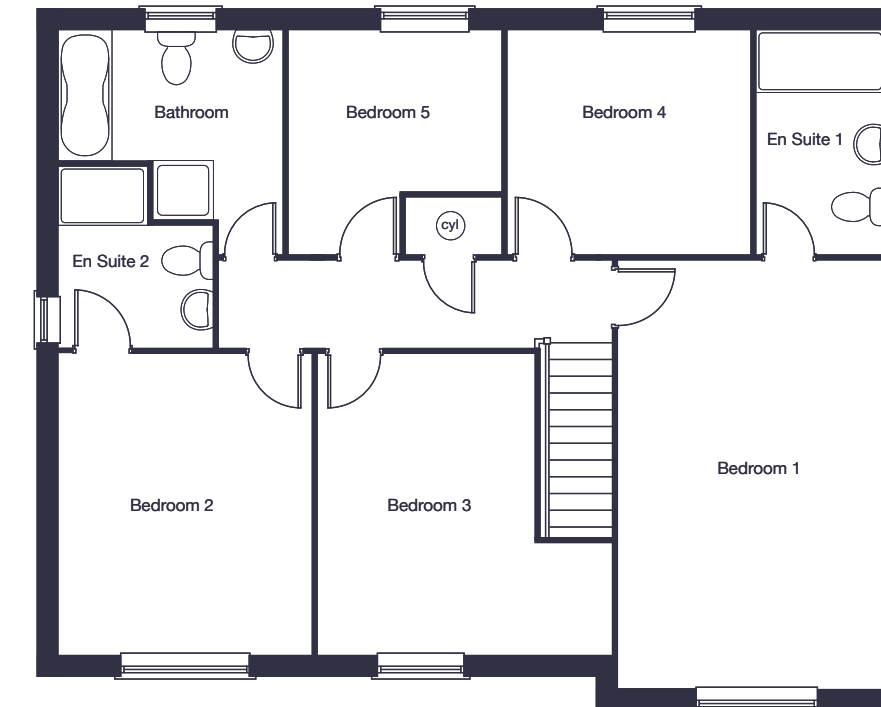
jones-homes.co.uk/gateford-park

Built with you in mind



Ground Floor

Living Room	5.68m x 3.54m	18'8" x 11'7"
Kitchen/Family/Dining	10.97m x 3.74m	36'0" x 12'3"
Double Garage	5.23m x 4.75m	17'2" x 15'7"



First Floor

Bedroom 1	5.75m x 3.54m	18'10" x 11'7"
Bedroom 2	4.02m x 3.38m	13'2" x 11'1"
Bedroom 3	4.02m x 3.79m	13'2" x 12'5"
Bedroom 4	3.26m x 2.99m	10'8" x 9'10"
Bedroom 5	2.99m x 2.86m	9'10" x 9'5"

These floor plans and images are for guidance and illustrative purposes only and do not form part of any contract. All room sizes are approximate to maximum dimensions and some plots may be subject to additional gable or bay windows. Please ask our Sales Advisor for details on specification and plot specific street scenes. Every effort has been taken to ensure these plans are as accurate as possible at time of printing. However, Jones Homes reserves the right to vary details as may be necessary and without notice.



Buying a Jones home
is easier than you think

**CONSUMER
CODE** FOR
HOME BUILDERS

www.consumercode.co.uk

Built with you in mind

It's time to take a closer look at Gateford Park.

Just call 01909 570063 to book an appointment to view
or visit jones-homes.co.uk/gateford-park
for more information.

Once you've decided which house is perfect for you, you're ready to buy your new home.

1 Reserve your new home

As soon as you complete
a reservation form and pay
the reservation fee, we will
take your new home off
the market. This secures
your property for a fixed
period of time.

2 Apply for a mortgage

An independent financial
advisor can help you
decide which mortgage
is right for you. It is
important to do this as
soon as possible and we
will be happy to assist
with this.

3 Appoint a solicitor

Your solicitor will
handle the legal side of
your house purchase,
managing everything
from Local Authority
searches, exchange of
contracts and
legal completion.
Ask family and friends
for a recommendation
or speak to one of our
Sales Advisors.

4 Personalise your new home

By choosing from a wide
variety of kitchen units
and wall tiles,
together with a range
of optional extras you
may wish to purchase
and incorporate
(subject to build stage).

5 Exchange and complete

Your solicitor will advise
you once all necessary
searches and enquiries
have been made and your
contract is ready for your
signature prior to exchange.
When you exchange, you
will pay the agreed deposit
and then we're all legally
bound to complete the sale.
Following build completion
you will be required, prior
to legal completion of the
transaction, to transfer the
balance of the monies to us.

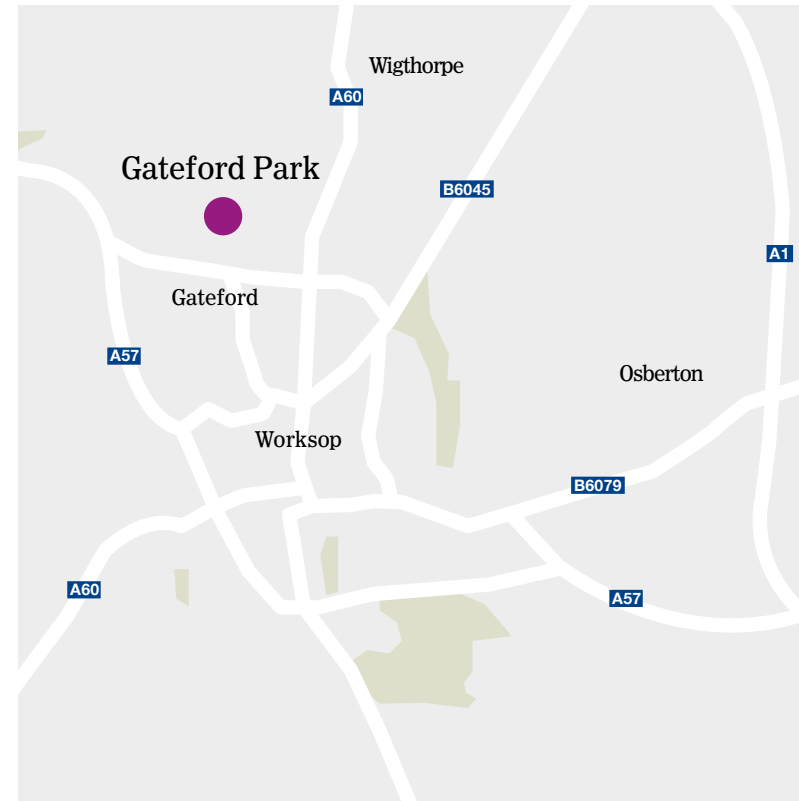
6 Move in

Following legal completion
you can collect your keys
from the Sales Advisor
and Site Manager who will
accompany you to your
new home.

How to find us...

Gateford Park

Off Churchill Way, Gateford, Worksop, Nottinghamshire S81 7RB



Gateford Park

Off Churchill Way, Gateford, Worksop, Nottinghamshire S81 7RB

Telephone: 01909 570063

Jones Homes Regional Office:

Green Bank House, Green Bank, Cleckheaton, West Yorkshire BD19 5LQ

Telephone: 01274 852700

jones-homes.co.uk

JONES
HOMES

Details correct at time of going to print. Images representative only.

Internal photography may show upgraded specification, ask the Sales Advisor for details.

JHY8568/March 2023.