



25 Chauntry Road, Maidenhead
£1,300,000

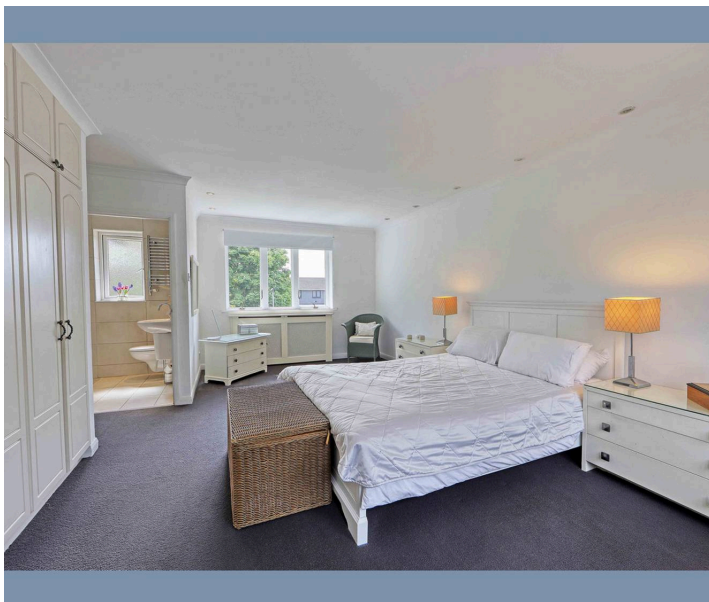


25 Chantry Road

Maidenhead

Beautifully situated in a central, yet tucked away location in Maidenhead, this delightful home boasts a mature third of an acre plot. The well maintained accommodation comprises a bright entrance hall with doors to all of the reception areas. To the left is a generous through lounge with wood floor and fireplace at the rear with doors into both the conservatory and the dining room. The modern kitchen breakfast room with utility room; has glazed doors into the family room, which can double as an office if required. Outside, the private, well established secluded garden is a real feature of the home with wild areas and spaces for outbuildings if desired. Upstairs, there is a master bedroom with ensuite overlooking both gardens and a guest bedroom which boasts a front aspect. Two further double bedrooms are served by the recently updated family bathroom. There are two further separate w.c's, one on each floor, plus a large loft space with potential for extension, STPP. Presented in excellent condition and with no onward chain.

- Large driveway for several cars
- Premier tree lined road
- Generous reception areas
- Four/five bedrooms
- Leafy street, yet within short walk of town
- Dual aspect master bed with ensuite





TOTAL FLOOR AREA : 2522sq.ft. (234.3 sq.m.) approx.

Whilst every attempt has been made to ensure the accuracy of the floorplan contained here, measurements of doors, windows, rooms and any other items are approximate and no responsibility is taken for any error, omission or mis-statement. This plan is for illustrative purposes only and should be used as such by any prospective purchaser. The services, systems and appliances shown have not been tested and no guarantee as to their operability or efficiency can be given.

Made with Metropix ©2025

B



Barker Stone

Barker Stone, 31 High Street, Cookham – SL6 9SJ

01628 947 888 • enquiries@barkerstone.co.uk • barkerstone.co.uk



Note for prospective buyers and tenants: Whilst every attempt has been made to ensure accuracy, these particulars are for general guidance only. All measurements are approximate and they must not be relied upon. All photographs are for general information and it is not inferred that any item shown is included with the property.