

## 1 Bennett Crescent, Hethersett

£325,000 Freehold

Guide Price: £325,000–£350,000. Experience modern family living in this well-presented three-bedroom detached home, ideally positioned on a generous corner plot within a sought-after development.



Guide Price: £325,000–£350,000. Experience modern family living in this well-presented three-bedroom detached home, ideally positioned on a generous corner plot within a sought-after development. Inside, you'll find a bright, dual-aspect lounge with French doors opening onto the garden, a stylish, fitted kitchen/diner, and a main bedroom complete with an en-suite shower room. A contemporary family bathroom and a convenient ground-floor WC enhance the comfort and practicality of the layout. Outside, the enclosed rear garden offers a private space for relaxation or play, while the driveway provides parking for three or more vehicles, along with a single garage. With planning permissions already in place and excellent access to the Norfolk and Norwich University Hospital, the University of East Anglia, well-regarded schools, green spaces, and major road links, this is an ideal opportunity for growing families or professionals seeking both space and convenience.

Location

Situated in the sought-after village of Hethersett, Bennett Crescent enjoys a



Guide Price: £325,000–£350,000. Experience modern family living in this well-presented three-bedroom detached home, ideally positioned on a generous corner plot within a sought-after development. Inside, you'll find a bright, dual-aspect lounge with French doors opening onto the garden, a stylish, fitted kitchen/diner, and a main bedroom complete with an en-suite shower room. A contemporary family bathroom and a convenient ground-floor WC enhance the comfort and practicality of the layout. Outside, the enclosed rear garden offers a private space for relaxation or play.





Guide Price: £325,000–£350,000. Experience modern family living in this well-presented three-bedroom detached home, ideally positioned on a generous corner plot within a sought-after development. Inside, you'll find a bright, dual-aspect lounge with French doors opening onto the garden, a stylish, fitted kitchen/diner, and a main bedroom complete with an en-suite shower room. A contemporary family bathroom and a convenient ground-floor WC enhance the comfort and practicality of the layout. Outside, the enclosed rear garden offers a private space for relaxation or play, while the driveway provides parking for three or more vehicles, along with a single garage. With planning permissions already in place and excellent access to the Norfolk and Norwich University Hospital, the University of East Anglia, well-regarded schools, green spaces, and major road links, this is an ideal opportunity for growing families or professionals seeking both space and convenience.

### Location

Situated in the sought-after village of Hethersett, Bennett Crescent enjoys a peaceful residential setting just six miles from Norwich city centre. The area provides a strong sense of community alongside everyday convenience, with local amenities such as shops, schools, healthcare services, and leisure facilities all close by. Families are well served by highly regarded primary and secondary schools, and the location offers excellent access to the Norfolk and Norwich University Hospital and the University of East Anglia. Regular bus services and easy access to the A11 make travel to Norwich, Wymondham, and beyond straightforward. Surrounded by green spaces and countryside walks, this is a well-connected and appealing place to call home.

### Bennett Crescent, Hethersett

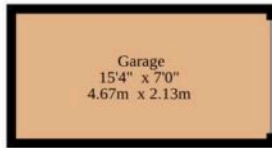
Upon entering the property, you're welcomed into a bright and inviting hallway that sets the tone for the rest of the home. A convenient storage cupboard provides practical space for everyday items, while a ground-floor WC with partially tiled walls enhances the home's functionality.

The lounge is spacious and filled with natural light, thanks to its dual-aspect design. With stylish wallpaper adding a touch of character, this room provides a relaxing setting for family life or entertaining. French doors open directly onto the rear garden, allowing for easy access to the outdoor space.

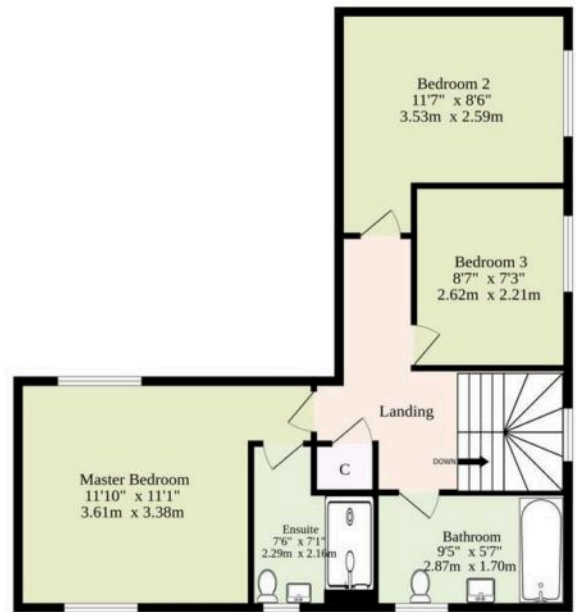
The kitchen/diner is both modern and well-equipped, featuring sleek white fitted units, wood-effect worktops, and a contemporary tiled splashback. An integrated oven, hob, and extractor fan make it practical for home cooking, while



Ground Floor  
686 sq.ft. (63.7 sq.m.) approx.



1st Floor  
544 sq.ft. (50.5 sq.m.) approx.



Sqft Includes Garage

TOTAL FLOOR AREA : 1230 sq.ft. (114.3 sq.m.) approx.

Whilst every attempt has been made to ensure the accuracy of the floorplan contained here, measurements of doors, windows, rooms and any other items are approximate and no responsibility is taken for any error, omission or mis-statement. This plan is for illustrative purposes only and should be used as such by any prospective purchaser. The services, systems and appliances shown have not been tested and no guarantee as to their operability or efficiency can be given.  
Made with Metropix ©2025

You can include any text here. The text can be modified upon generating your brochure.

You can include any text here. The text can be modified upon generating your brochure.

