



Flat 10 Little Orchard Place, Esher
£2,200 pcm



Flat 10 Little Orchard Place

Esher, Esher

This beautifully presented top-floor apartment offers stunning views over Sandown Racecourse. With nearly 1,000 sq. ft. of bright, modern living space, this spacious two-bedroom, two-bathroom home is perfect for those seeking both comfort and style.

The living and kitchen area is thoughtfully designed with sleek, contemporary finishes, creating an inviting space for relaxing or entertaining. Both bedrooms are generously sized, and the bathrooms are fitted with high-quality fixtures for a touch of everyday luxury.

Ideally located just half a mile from Esher High Street and within easy walking distance of Esher train station, you'll have quick access to shops, cafés, and excellent transport links. The apartment also comes with the added bonus of an allocated parking space.

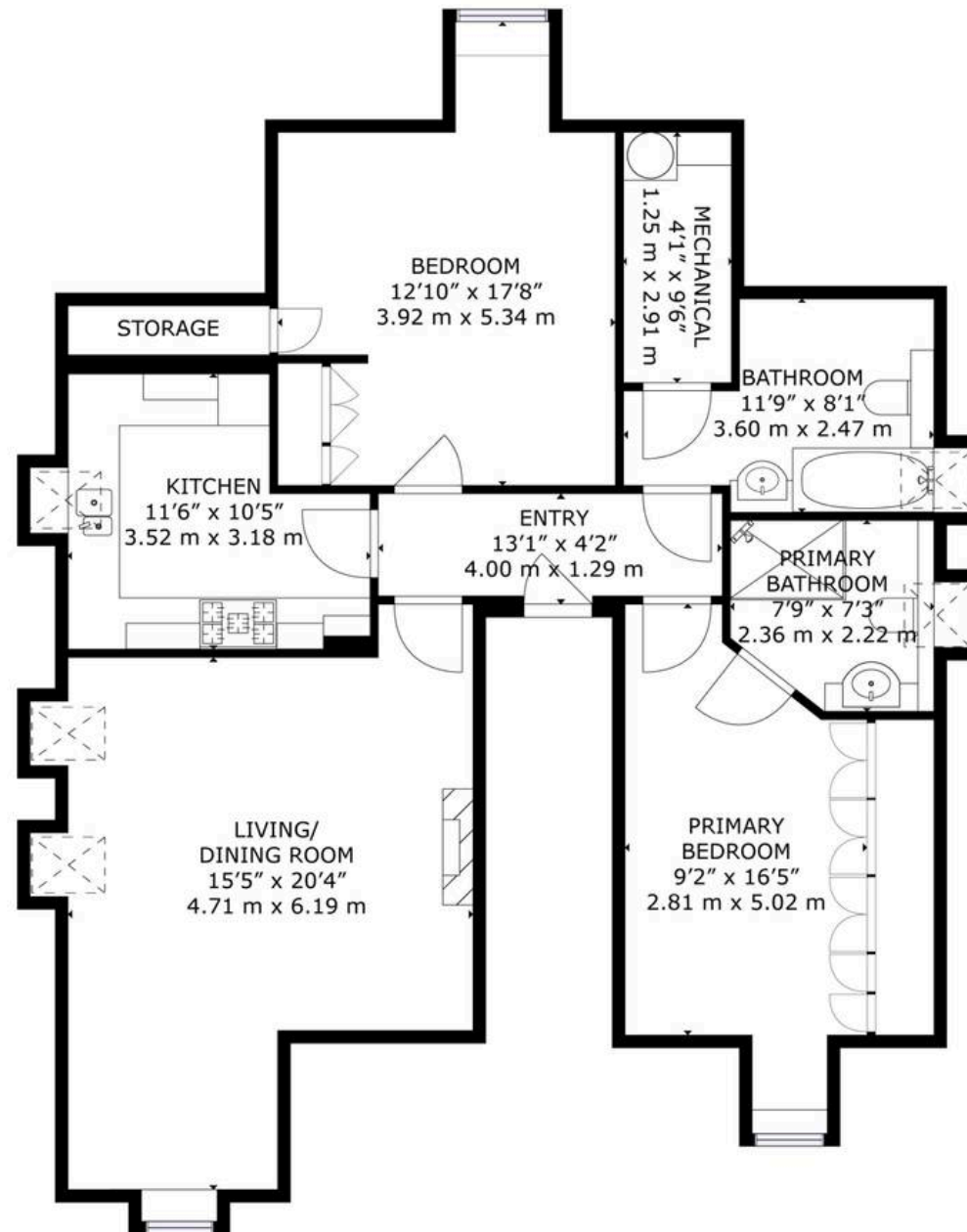


Council Tax band: E

Tenure: Leasehold

Call us to arrange a viewing on (01372) 462323





GROSS INTERNAL AREA
TOTAL: 947 sq.ft, 88 m²

SIZES AND DIMENSIONS ARE APPROXIMATE, ACTUAL MAY VARY.

FLOOR 1

DAVIES
PROPERTY PARTNERS