



The Stirrups Saddlemakers Lane, Melton

Guide Price £450,000





The Stirrups Saddlemakers Lane

Melton, Woodbridge

A spacious two bedroom detached bungalow along a quiet county lane but close to Melton centre and the close by amenities.

Council Tax band: D

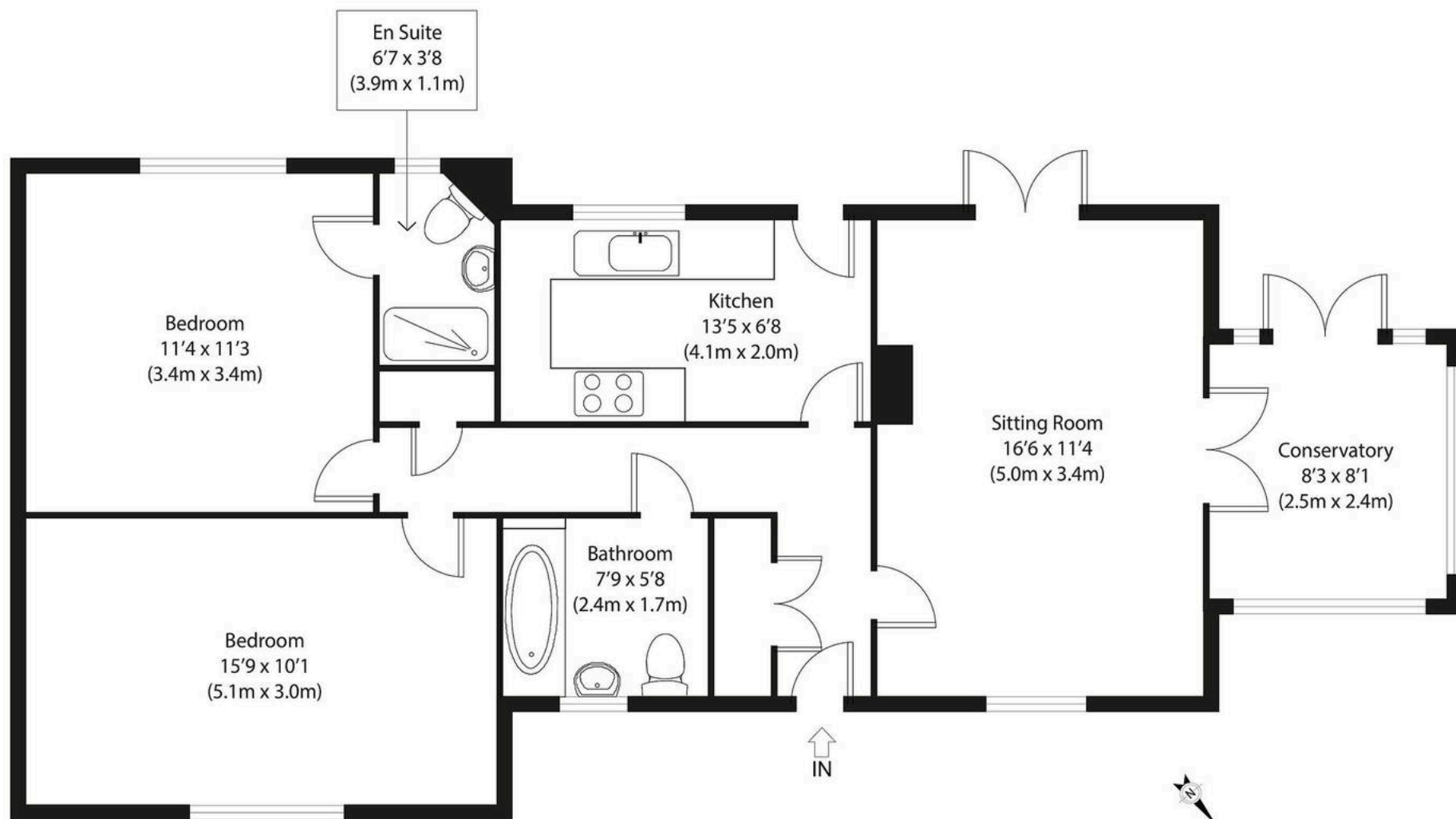
Tenure: Freehold

EPC Energy Efficiency Rating: C

EPC Environmental Impact Rating:







Ground Floor
Approximate Gross Internal Area
855 sq ft (79 sq m)

Disclaimer: Floorplan measurements are approximate and are for illustrative purposes only. While we do not doubt the floor plan accuracy and completeness, you or your advisors should conduct a careful, independent investigation of the property in respect of monetary valuation. copyright www.photohausgroup.co.uk





Potters Estate Agents

Potters Estate Agents, 6 Market Hill – IP12 4LU

01394 447487 • enquiries@pottersestateagents.com • www.pottersestateagents.com/