

33 Forest Glade

North Weald, Epping

Guide Price £1,150,000

Council Tax band: G

Tenure: Freehold

- Beautifully landscaped garden with outbuilding
- Spacious four bedroom family home
- Primary bedroom with dressing room and ensuite
- Second ensuite bedroom with play area
- Rear access onto woodland
- Close to the M11
- Off road parking for 6 cars



Entrance Hall

15' 10" x 10' 5" (4.83m x 3.18m)

Living Room

16' 11" x 14' 7" (5.15m x 4.44m)

Kitchen

23' 11" x 18' 5" (7.28m x 5.61m)

Office

11' 10" x 6' 4" (3.60m x 1.92m)

Playroom

12' 8" x 8' 6" (3.85m x 2.59m)

Primary Bedroom

14' 8" x 18' 5" (4.46m x 5.61m)

Dressing Room

6' 5" x 7' 7" (1.95m x 2.32m)

Ensuite Shower Room**Bedroom**

15' 10" x 10' 5" (4.83m x 3.18m)

Playroom

5' 11" x 8' 6" (1.81m x 2.59m)

Ensuite Bathroom**Bedroom**

13' 1" x 14' 7" (3.98m x 4.44m)

Bathroom



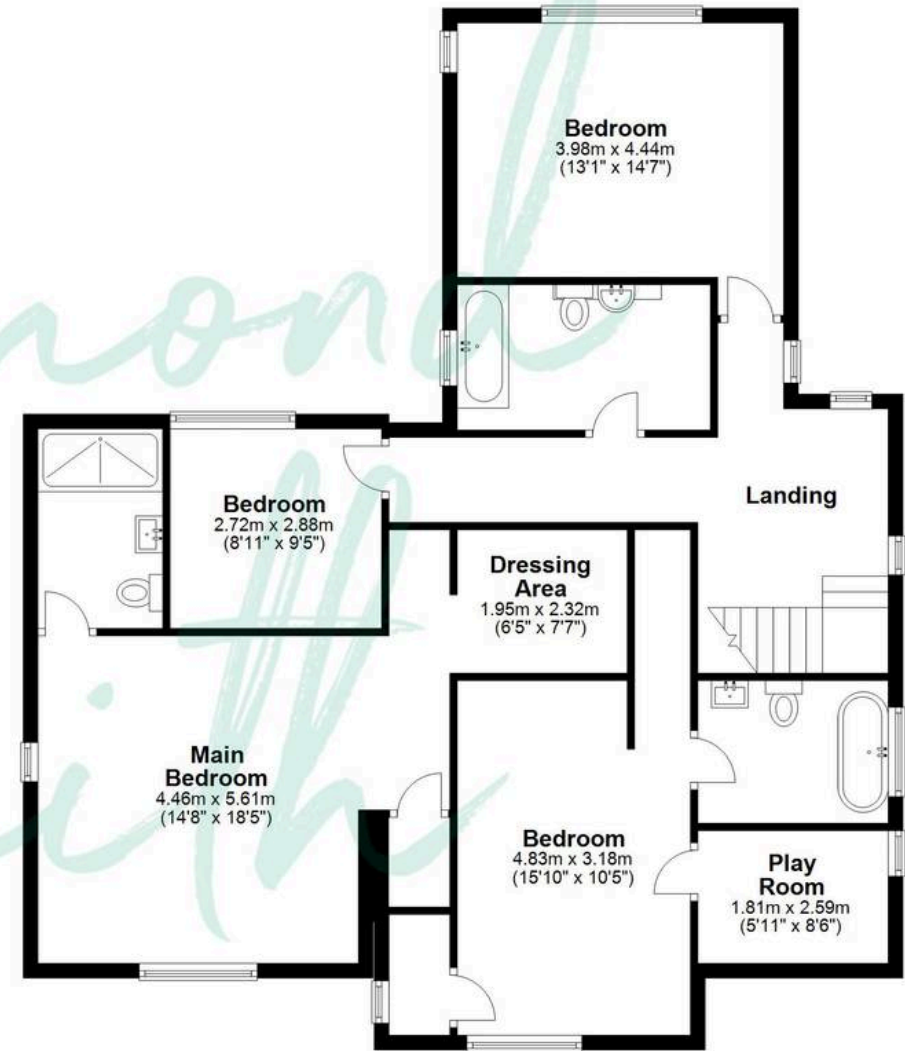
Ground Floor

Approx. 124.9 sq. metres (1344.0 sq. feet)



First Floor

Approx. 112.7 sq. metres (1213.3 sq. feet)



Total area: approx. 237.6 sq. metres (2557.3 sq. feet)

THE FLOORPLAN IS FOR ILLUSTRATIVE PURPOSES ONLY AND IS NOT TO SCALE. Measurements and features are approximate and may differ from the actual property. Verify all details independently; no liability is accepted for errors or omissions.