

4 Bedroom End Terraced for Sale - £335,000

Congreve Way, Stratford Upon Avon, CV37 7JX



KEY FEATURES

- 4 Bedrooms • 2 Bathrooms • NO ONWARD CHAIN • Superb Extended Lounge/Diner • Downstairs Cloakroom • Low-Maintenance Rear Garden • Driveway Parking

Description

NO ONWARD CHAIN. Situated in a popular south-of-the-river location within catchment for Bridgetown Primary School, this well-presented four-bedroom townhouse offers spacious, flexible living across three floors, complete with driveway parking and a low-maintenance rear garden.

The layout has been thoughtfully designed for modern living. On the ground floor, the kitchen is positioned at the front, while to the rear, a superb extended lounge/diner opens directly onto the garden - a perfect space for relaxing or entertaining. A downstairs cloakroom completes the ground floor.

The first floor offers a double bedroom (Bedroom 3), a generous single (Bedroom 4), and a family bathroom. On the second floor, you'll find two further double bedrooms, including the principal bedroom with its own en-suite shower room.

The property also benefits from driveway parking at the front and an easy-to-manage garden to the rear.

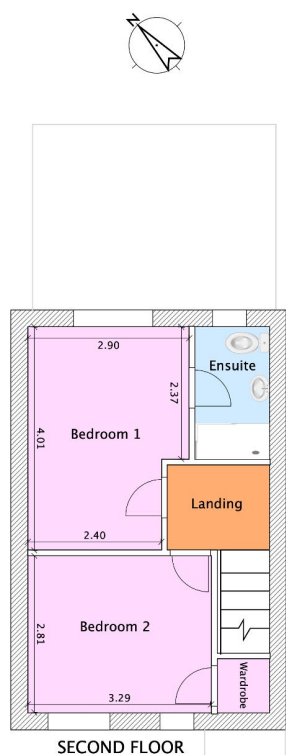
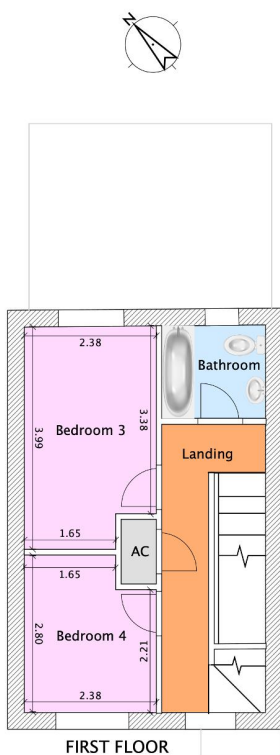
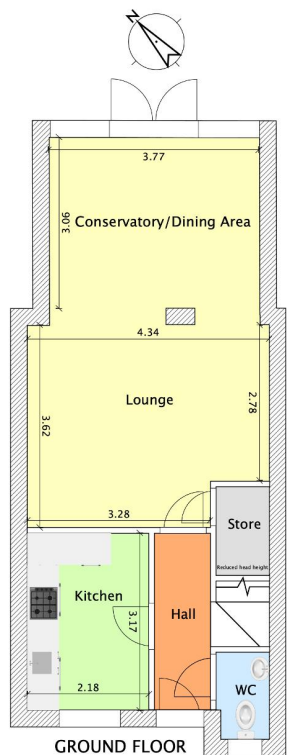
Stratford-upon-Avon is a vibrant market town steeped in history, offering a wealth of shops, restaurants, cultural attractions, excellent schools and scenic riverside walks.

Additional Information

We are informed by the vendor that the property is freehold and benefits from mains gas, electricity and drainage. Council Tax Band E with Stratford on Avon District Council. All information should be checked by your solicitor prior to exchange of contracts.







Score	Energy rating	Current	Potential
92+	A		
81-91	B		
69-80	C	75 C	86 B
55-68	D		
39-54	E		
21-38	F		
1-20	G		