



**Springer Court, 26 Navigation Road**  
London

Guide Price £450,000

**OLIVER J AQUES**  
EST. 1986

# Springer Court, London

This beautifully presented, recently redecorated two-bedroom apartment offers tranquil riverside living with excellent access to Central London. Situated next to the River Lea, the design of the apartment embraces its picturesque setting, with an expansive open-plan reception area and private balcony that provide sweeping views over the river. Council Tax band: D

Tenure: Leasehold

Lease end date: 22/01/2141

Service Charge: £214. Covers all repairs, insurance and maintenance.

Ground Rent: £150.00 PA

EPC Energy Efficiency Rating: B

EPC Environmental Impact Rating: B

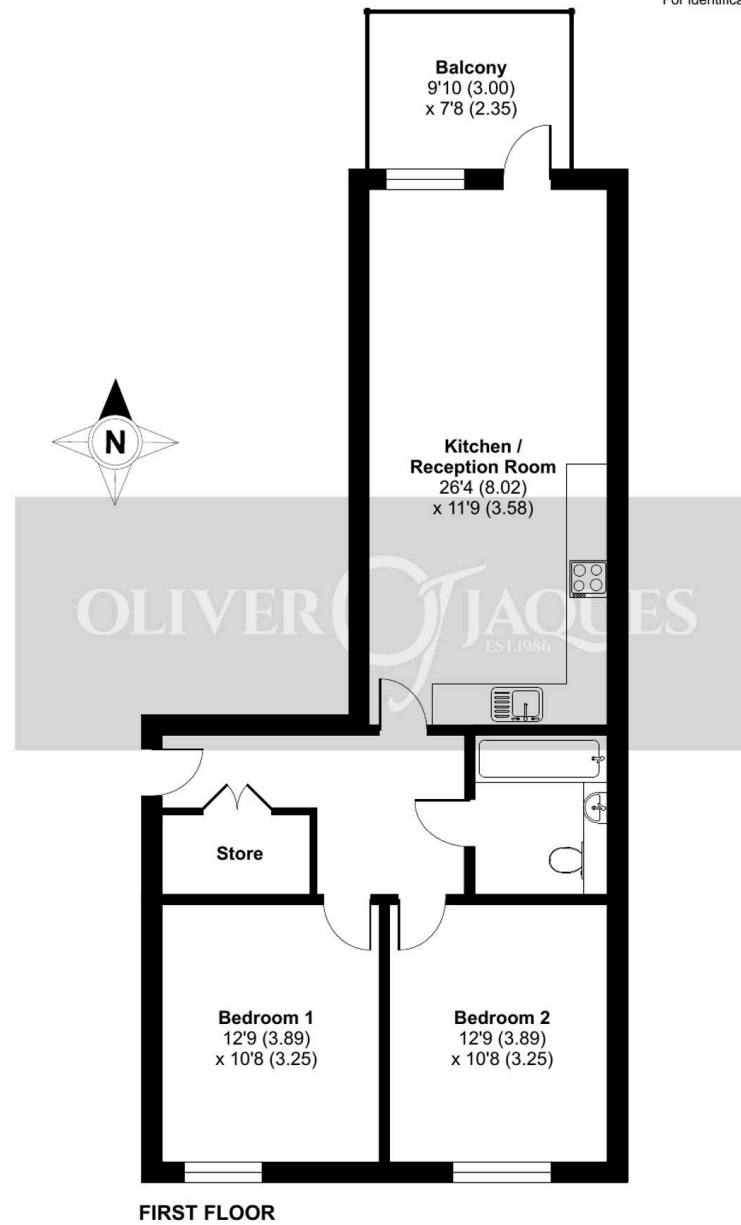
- Two Double Bedroom Apartment
- Stunning Views from the main reception & balcony over the River Lea
- Open plan lounge/diner/kitchen
- Modern fitted bathroom
- Private balcony
- Recently redecorated throughout
- Bromley-by-Bow Station 0.2 miles (Zone 2/3)
- Devons Road Station 0.4 miles (Zone 2)
- No Onward Chain



# Navigation Road, London, E3

Approximate Area = 771 sq ft / 71.6 sq m

For identification only - Not to scale



Floor plan produced in accordance with RICS Property Measurement 2nd Edition, Incorporating International Property Measurement Standards (IPMS2 Residential). © nchecon 2025. Produced for Oliver Jaques. REF: 1290841





## Oliver Jaques Bow

Oliver Jaques Estate Agents Ltd, Unit A Arlington Building – E3 2UB

02089800999 • [East@o-j.co.uk](mailto:East@o-j.co.uk) • [o-j.co.uk/](http://o-j.co.uk/)