



Alder Street, Eccles

Manchester



Offers in Region of £230,000

Alder Street

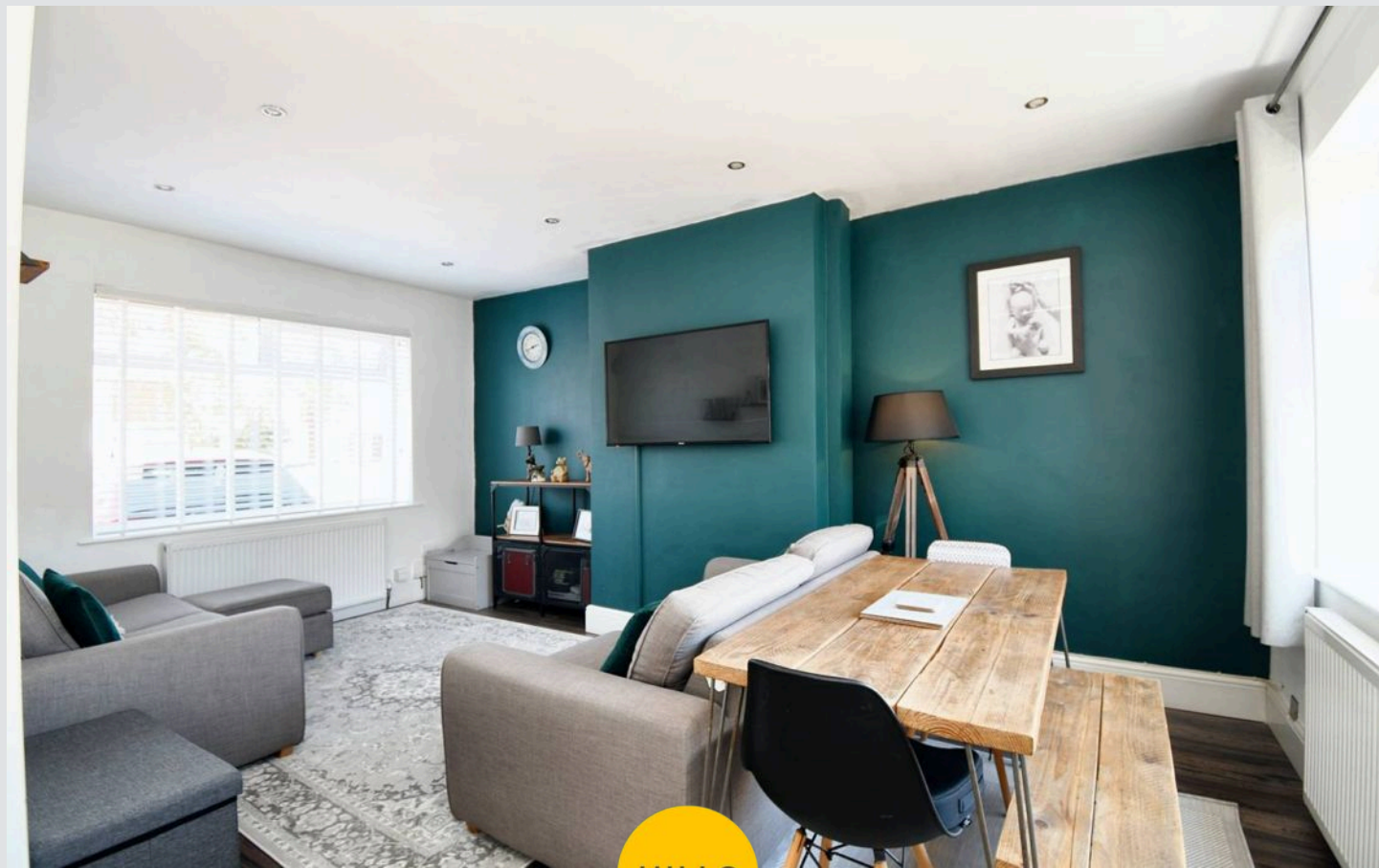
Eccles, Manchester

Immaculate three bed home in quiet cul de sac between Worsley & Morton. Open lounge/dining, modern kitchen, fitted wardrobes, luxurious bathroom, potential for parking, sunny garden. Ideal for first-time buyers or downsizers, close to amenities & transport links.

Council Tax band: A

Tenure: Leasehold

- Tucked away on a Quiet Cul De Sac, Sandwiched between Worsley & Morton Villages
- Immaculately Presented Throughout
- Open Plan Lounge & Dining Space
- Modern Fitted Kitchen
- Three Bedrooms Master with Fitted Wardrobes & Closet to the Box Room
- Stunning Three Piece Bathroom Suite
- Potential for Off Road Parking
- Sun Drenched, Well Kept Rear Garden
- Perfect First Time Buy Surrounded by Excellent Amenities & Transport Links



HILLS



Entrance Hallway

Entered via a uPVC front door. Complete with a ceiling light point, double glazed window and wall mounted radiator. Fitted with laminate flooring.

Lounge / Diner

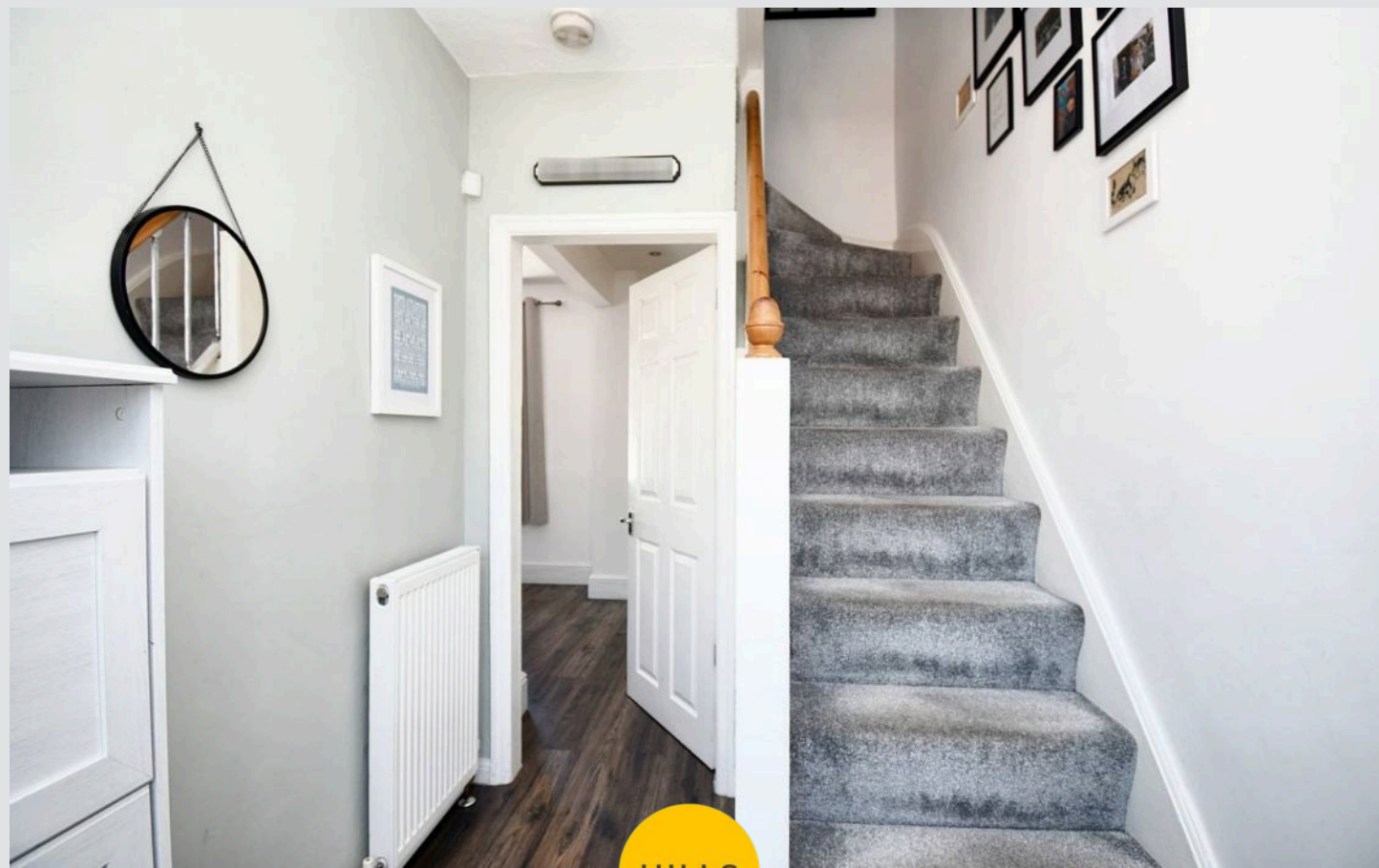
19' 8" x 11' 6" (6.00m x 3.50m)

Complete with ceiling spotlights, two double glazed windows and two wall mounted radiators. Fitted with laminate flooring. Understairs storage.

Kitchen

9' 10" x 8' 2" (3.00m x 2.50m)

Featuring complementary fitted units with integral stainless steel sink, electric hob and oven. Glass splashback. Space for a washing machine and fridge freezer. Complete with ceiling spotlights, two double glazed windows and wall mounted radiator. Fitted with uPVC door and laminate flooring.



HILLS



Landing

Complete with a ceiling light point and carpet flooring. Loft access.

Bedroom One

10' 6" x 9' 6" (3.20m x 2.90m)

Featuring fitted wardrobes. Complete with a ceiling light point, double glazed window and wall mounted radiator. Fitted with carpet flooring.

Bedroom Two

10' 6" x 7' 3" (3.20m x 2.20m)

Complete with a ceiling light point, double glazed window and wall mounted radiator. Fitted with carpet flooring. Boiler.

Bedroom Three

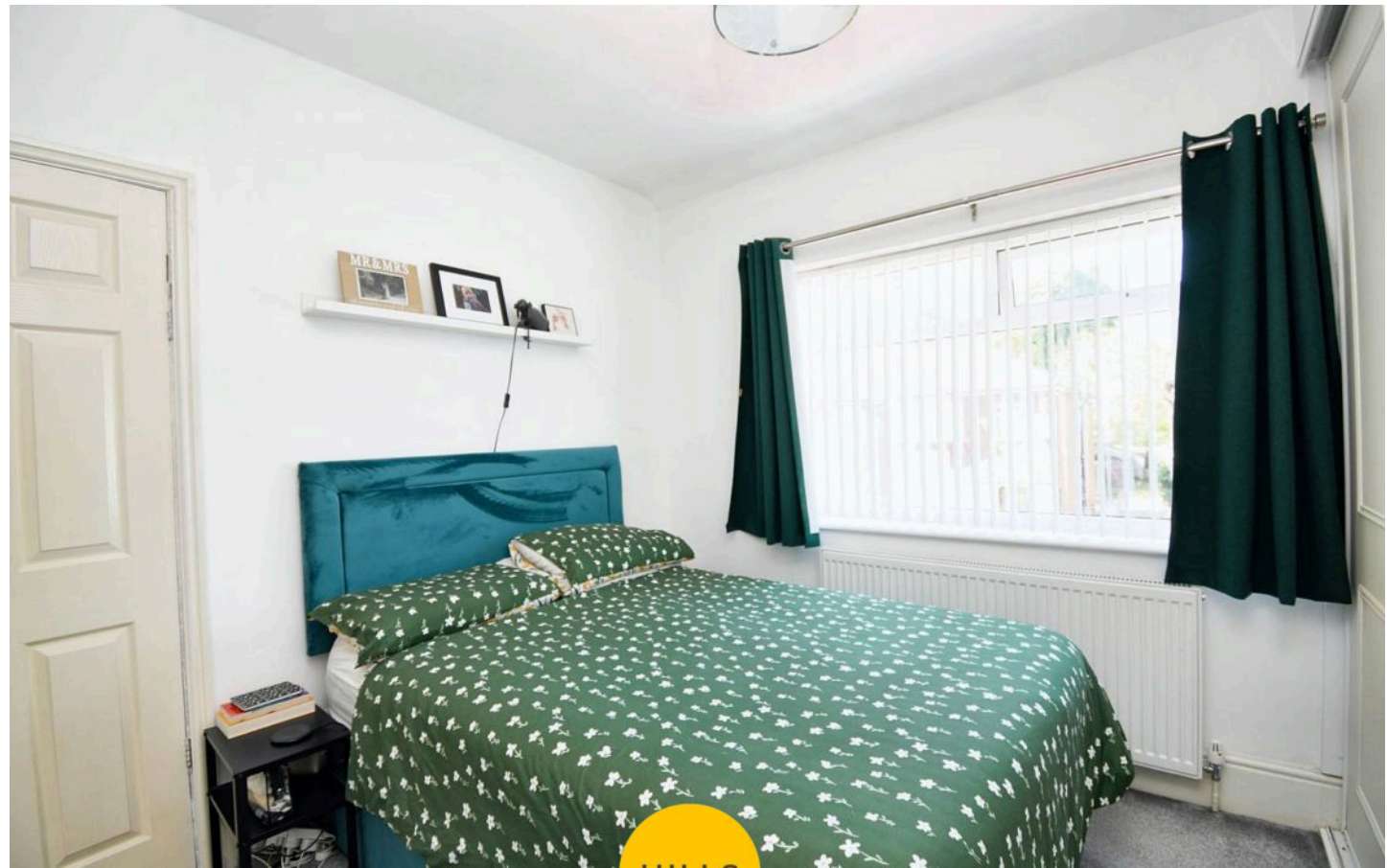
8' 6" x 5' 7" (2.60m x 1.70m)

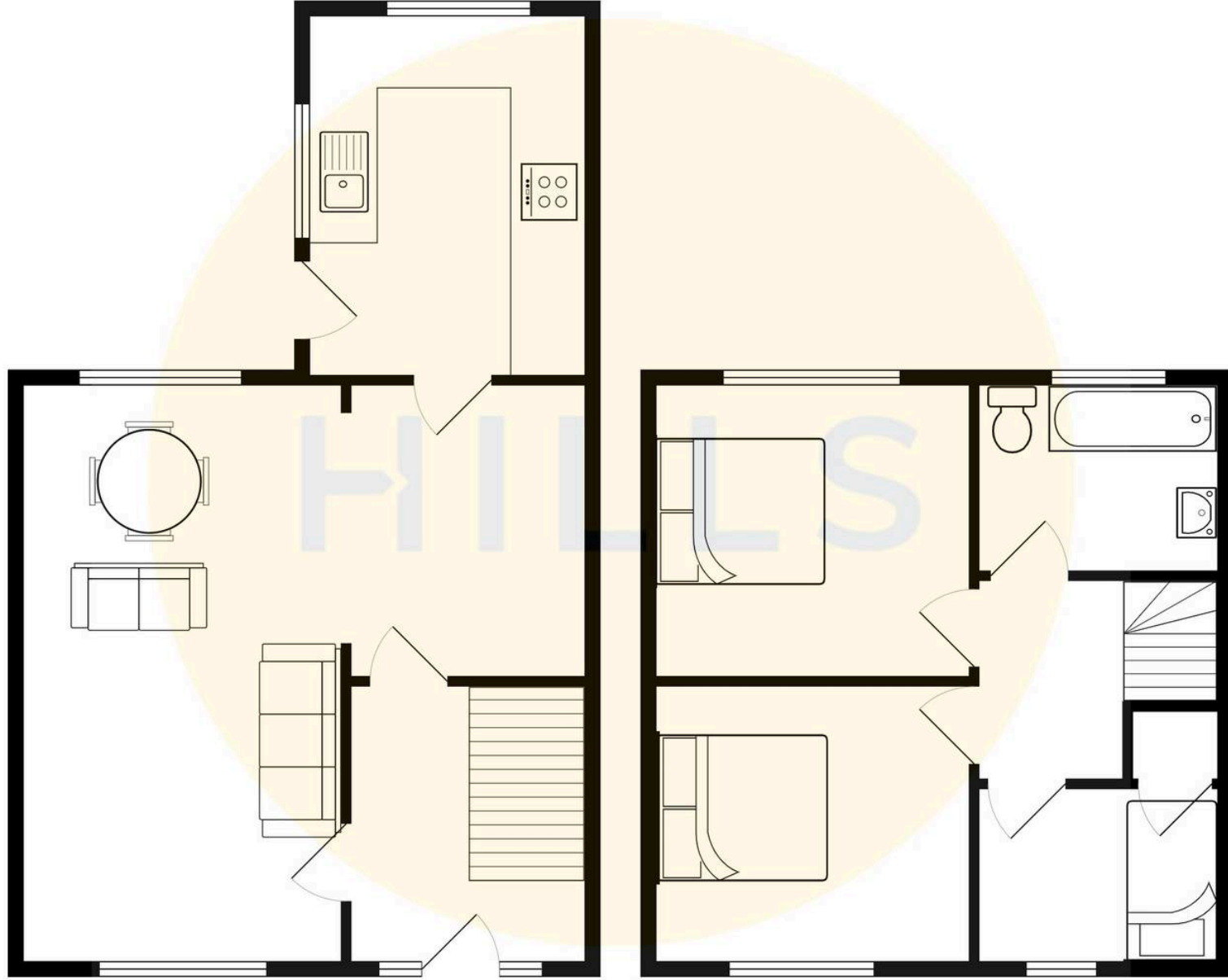
Featuring fitted closet. Complete with a ceiling light point, double glazed window and wall mounted radiator. Fitted with carpet flooring.

Bathroom

7' 10" x 6' 3" (2.40m x 1.90m)

Featuring a three piece suite including a bath with shower over, hand wash basin and W.C. Complete with ceiling spotlights, double glazed window and wall mounted radiator. Fitted with part tiled walls and tiled flooring.







Hills | Salfords Estate Agent

Hills Residential, Sentinel House Albert Street - M30 0SS

0161 707 4900

sales@hills.agency

www.hills.agency/



THE PROPERTY MISDESCRIPTIONS ACT 1991 The Agent has not tested any apparatus, equipment, fixtures and fittings or services and so cannot verify that they are in working order or fit for the purpose. A Buyer is advised to obtain verification from their Solicitor or Surveyor. References to the Tenure of a Property are based on information supplied by the Seller. The Agent has not had sight of the title documents. A Buyer is advised to obtain verification from their Solicitor. You are advised to check the availability of this property before travelling any distance to view. Every effort and precaution has been made to ensure these particulars are correct and not misleading but their accuracy is not guaranteed nor do they form part of any contract. If there is any point which is of particular importance to you, please contact us and we will provide any information you require. This is advisable, particularly if you intend to travel some distance to view the property. The mention of any appliances and services within these details does not imply that they are in full and efficient working order. These particulars are in draft form awaiting Vendors confirmation of their accuracy. These details must therefore be taken as a guide only.