

richard  
james



## *2 Stonehenge Road*

East Wichel, Swindon, SN1 7AH

Offers Over  
**£400,000**





## 2 Stonehenge Road

East Wichel

Freehold | EPC Rating - C

 4  3  2

A beautifully presented four DOUBLE-bedroom, three-storey detached home, located in the highly desirable Wichelstowe development.

This spacious property is thoughtfully designed and features: an inviting Entrance Hallway, a modern Kitchen with integrated appliances, a large Living Room, a bright Conservatory ideal as a Dining Area, and a convenient downstairs WC.



**Rocky Redman Land**  
Sales Negotiator

**01793 311 046**  
[rockyredmanland@richardjames.uk](mailto:rockyredmanland@richardjames.uk)



Scan here



Bright and  
Airy







The first floor includes two double Bedrooms, both with En-Suite bathrooms, along with a stylish Family Bathroom.

On the second floor, you'll find two additional double Bedrooms, offering flexibility for family living, a home office, or guest space.



Private  
Garden







The property also benefits from a well-maintained rear garden, a private driveway, and a garage.

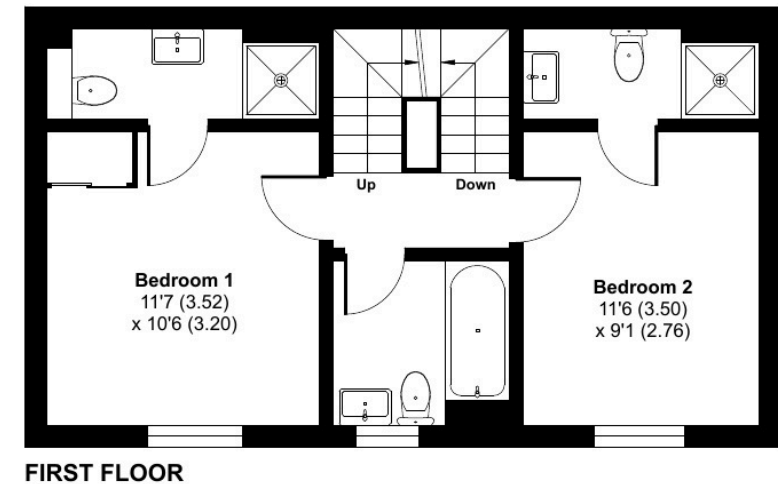
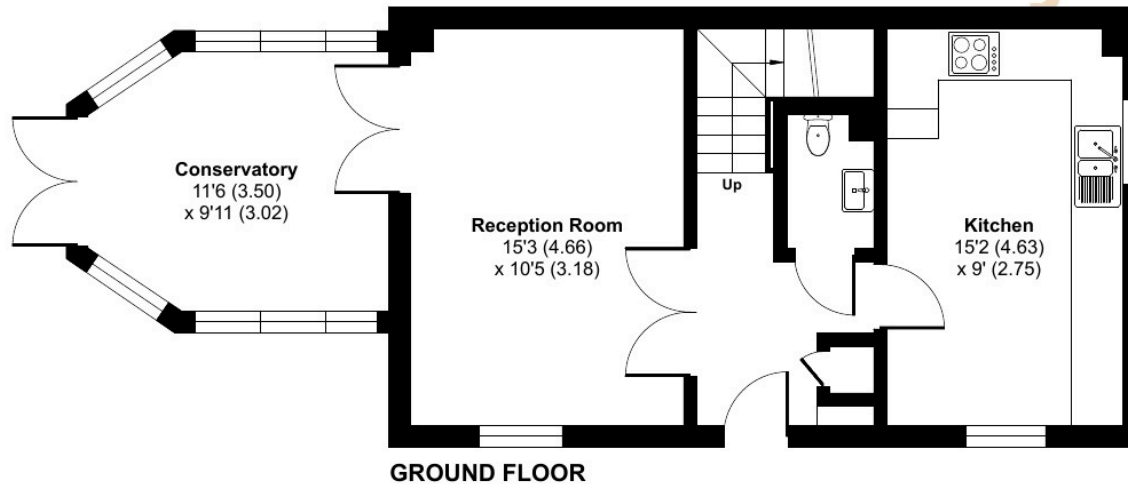
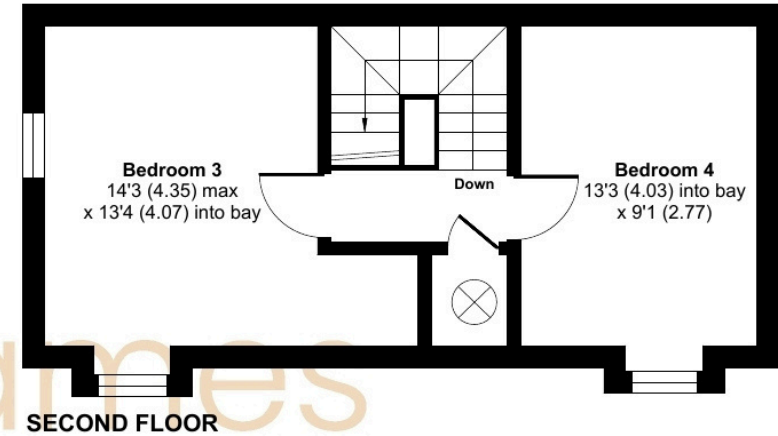
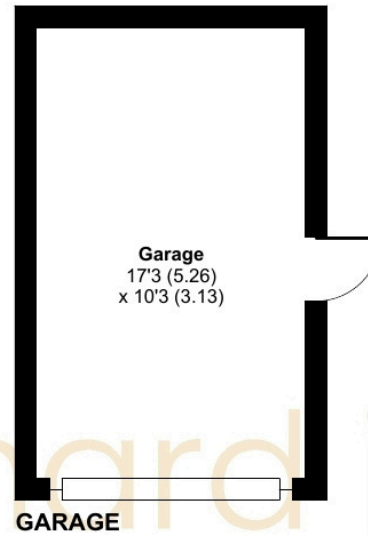


Approximate Area = 1278 sq ft / 118.7 sq m

Garage = 177 sq ft / 16.4 sq m

Total = 1455 sq ft / 135.1 sq m

For identification only - Not to scale



**01793 520 720**

oldtown@richardjames.uk

101 Victoria Road | Old Town | Swindon | SN1 3BD

**richardjames.uk**

