



7 Skylark Avenue, Emsworth

Guide Price **£450,000**


Henry Adams
estate agents





7 Skylark Avenue

Emsworth, Emsworth

BEAUTIFULLY PRESENTED 3-bed semi-detached house in tranquil cul-de-sac. Stylish interiors, MODERN FITTED KITCHEN/dining/family room, EN-SUITE, private garden with patio, GARAGE, parking. Perfect blend of comfort and elegance. Council Tax band: C

Tenure: Freehold

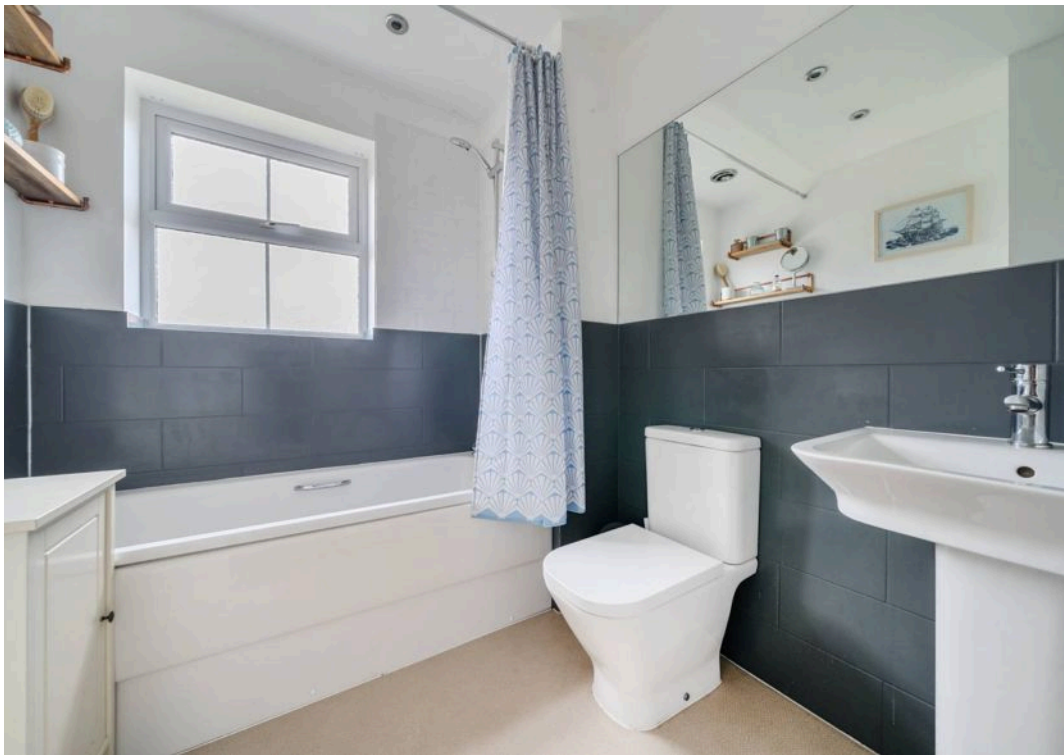
EPC Energy Efficiency Rating: B

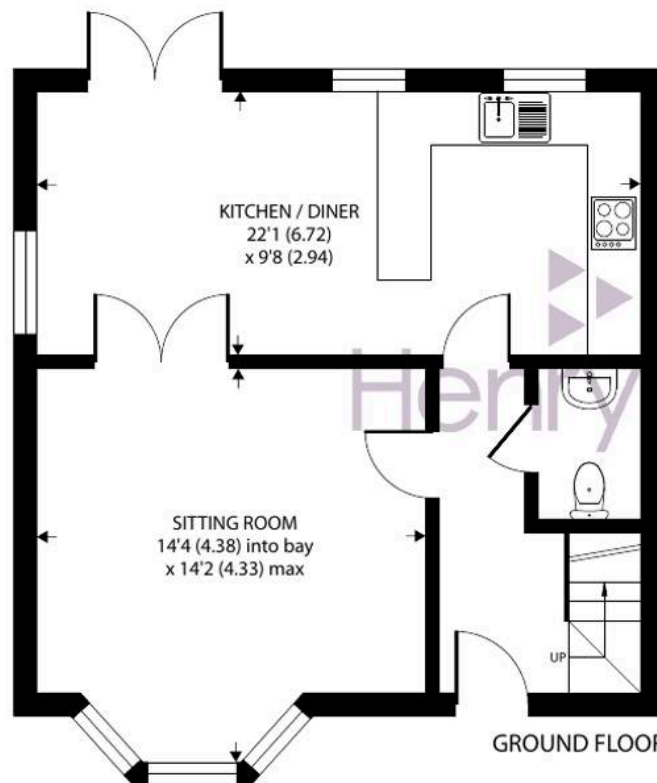
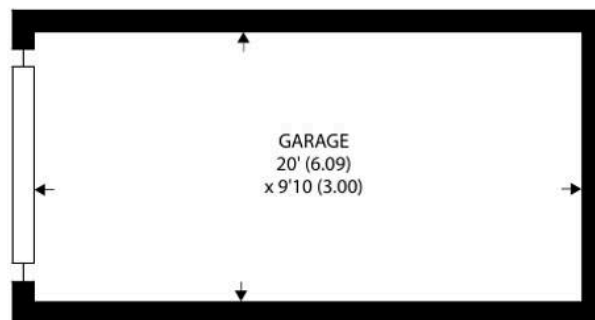
EPC Environmental Impact Rating: B

- Beautifully Presented Three Bedroom Semi-Detached House
- Quiet Cul-De-Sac Location
- Light & Spacious Throughout
- Stylish Fitted Kitchen / Dining / Family Room With Doors To Garden
- Sitting Room With Feature Bay Window
- Cloakroom
- Bedroom One With Modern En-suite
- Family Bathroom
- Garage & Parking
- Viewing Highly Advised









Approximate Area = 882 sq ft / 81.9 sq m

Garage = 197 sq ft / 18.3 sq m

Total = 1079 sq ft / 100.2 sq m

For identification only - Not to scale





GARDEN

Secure Private Garden With Patio Area & Side Access

GARAGE

Double Garage

Garage & Parking





Henry Adams – Emsworth

Henry Adams LLP, 15 North Street, Emsworth – PO10 7BY

01243 377773

emsworth@henryadams.co.uk

www.henryadams.co.uk/

Agents Note – Our particulars are for guidance only and are intended to give a fair overall summary of the property. They do not form part of any contract or offer, and should not be relied upon as a statement or representation of fact. Measurements, areas and distances are approximate only. Photographs may include lifestyle shots and pictures of local views. No undertaking is given as to the structural condition of the property, or any necessary consents or the operating ability or efficiency of any service, system or appliance. Please ask if you would like further information, especially before you travel to the property.