





St. Richards Court Ashburnham Road

Richmond, Richmond

Spacious 3-bed duplex maisonette in St Richards Court. Large living space, fitted kitchen, 3 bedrooms, modern bathroom. Near Ham Lands, local amenities, schools. Lease details available, service charge approx. £2,600 p.a. Council Tax band: D

Tenure: Leasehold

EPC Energy Efficiency Rating: D

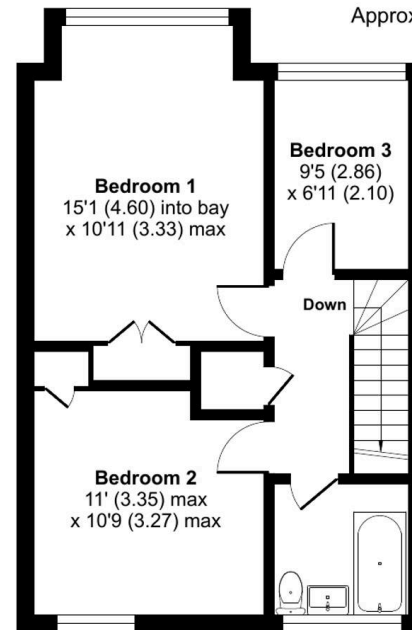
EPC Environmental Impact Rating: E

- Private entrance via secure 1st floor communal courtyard with entryphone system
- Three bedrooms: two generous doubles with built-in storage plus a third ideal as a guest room or study
- Large reception/dining room over 17' with feature bay window and open outlook
- Separate fitted kitchen with integrated appliances and space for breakfast dining
- Bathroom with full suite including bath and shower over
- Gas central heating & double glazing throughout
- Wood flooring on the main floor
- Private exterior store/bike locker

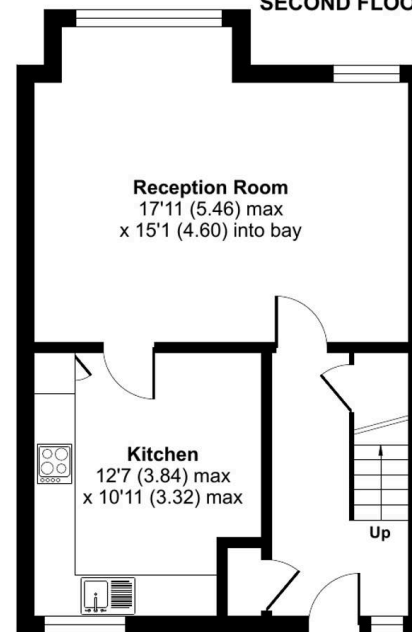
Ashburnham Road, Richmond, TW10

Approximate Area = 958 sq ft / 89 sq m

For identification only - Not to scale



SECOND FLOOR



FIRST FLOOR