

FINDING YOU A HOME  
SINCE 1972  
B



Le Reve Cache, La Route De Maufant, St. Saviour  
£2,600,000

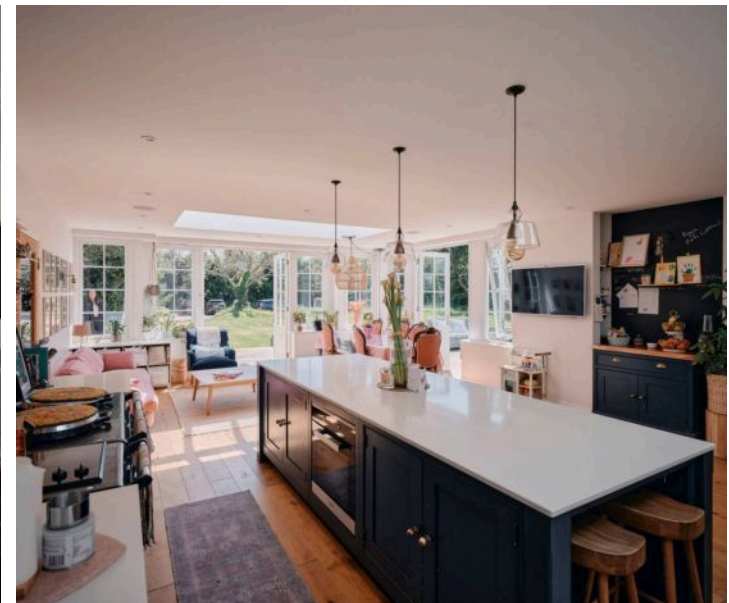
**BROADLANDS**  
FINDING YOU A HOME SINCE 1972



# Le Reve Cache, La Route De Maufant

St. Saviour, Jersey

- 5 Bed Semi-Detached Georgian Home
- Large sunny kitchen / dining room
- Separate home office & gym
- Parking for multiple vehicles
- South facing large lawned garden
- Private gated entrance
- Contact Angela - [angela@broadlandsjersey.com](mailto:angela@broadlandsjersey.com) / 07829 900010 or Harry - [harry@broadlandsjersey.com](mailto:harry@broadlandsjersey.com) 07797751557





# Le Reve Cache, La Route De Maufant

St. Saviour, Jersey

This beautifully presented five-bedroom, three-bathroom Georgian home in St. Saviour perfectly balances elegance, comfort, and practicality. From the moment you step inside, the expansive entrance hall sets a welcoming tone with its sense of space and light.

At the heart of the home is a stunning open-plan kitchen, where an exposed brick feature wall adds warmth and character. The kitchen opens into a relaxed TV lounge—an ideal space for everyday family life and casual entertaining. .

The ground floor also includes a convenient WC and a generously sized bedroom with its own ensuite—perfect for guests or multigenerational living. On the first floor, you'll find three well-proportioned bedrooms and a stylish family bathroom. The entire top floor is dedicated to the impressive principal suite, complete with an ensuite bathroom and a sense of privacy that feels like a true sanctuary.

Outside, the south-facing garden enjoys all-day sunshine and offers a superb setting for relaxation and play. A recently constructed gym and a separate home office add valuable flexibility for modern living, whether working from home or keeping active. Accessed via a secure gated entrance, the property offers both peace of mind and a welcome sense of seclusion.

This is a thoughtfully designed home that combines period charm with contemporary living—ideal for those seeking space, style, and tranquility in one of Jersey's most convenient parishes.







### **Living**

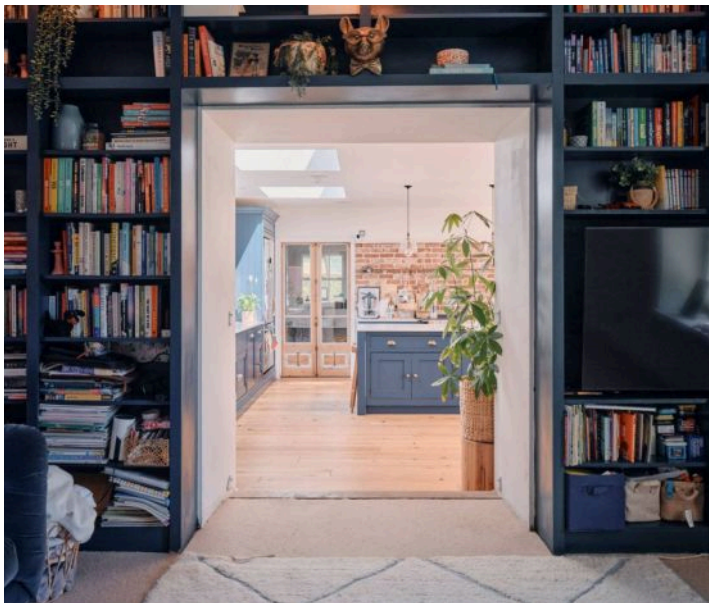
The living areas in this charming Georgian home are thoughtfully designed for both comfort and functionality. At the heart of the house, the open-plan kitchen with its striking exposed brickwork seamlessly connects to a cosy TV lounge—ideal for family life and casual gatherings. A tranquil library provides a quiet space to unwind, all framed by a spacious and welcoming entrance hall that sets the tone for the rest of the home.

### **sleeping**

The sleeping accommodation is both spacious and flexible, perfectly suited to modern family living. The ground floor features a generously sized bedroom with its own ensuite, ideal for guests or extended family. Upstairs, three well-proportioned bedrooms share a stylish family bathroom, while the top floor is dedicated to a luxurious principal suite complete with a private ensuite and a peaceful, elevated outlook.

### **Services**

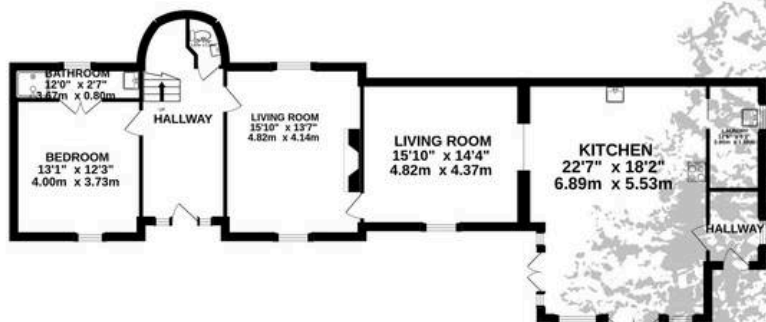
Oil fired



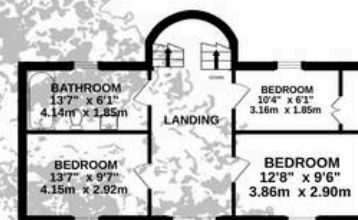




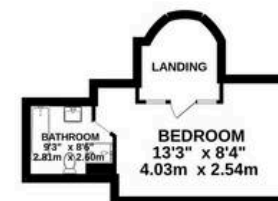
GROUND FLOOR  
1486 sq.ft. (138.1 sq.m.) approx.



1ST FLOOR  
558 sq.ft. (51.8 sq.m.) approx.



2ND FLOOR  
317 sq.ft. (29.4 sq.m.) approx.

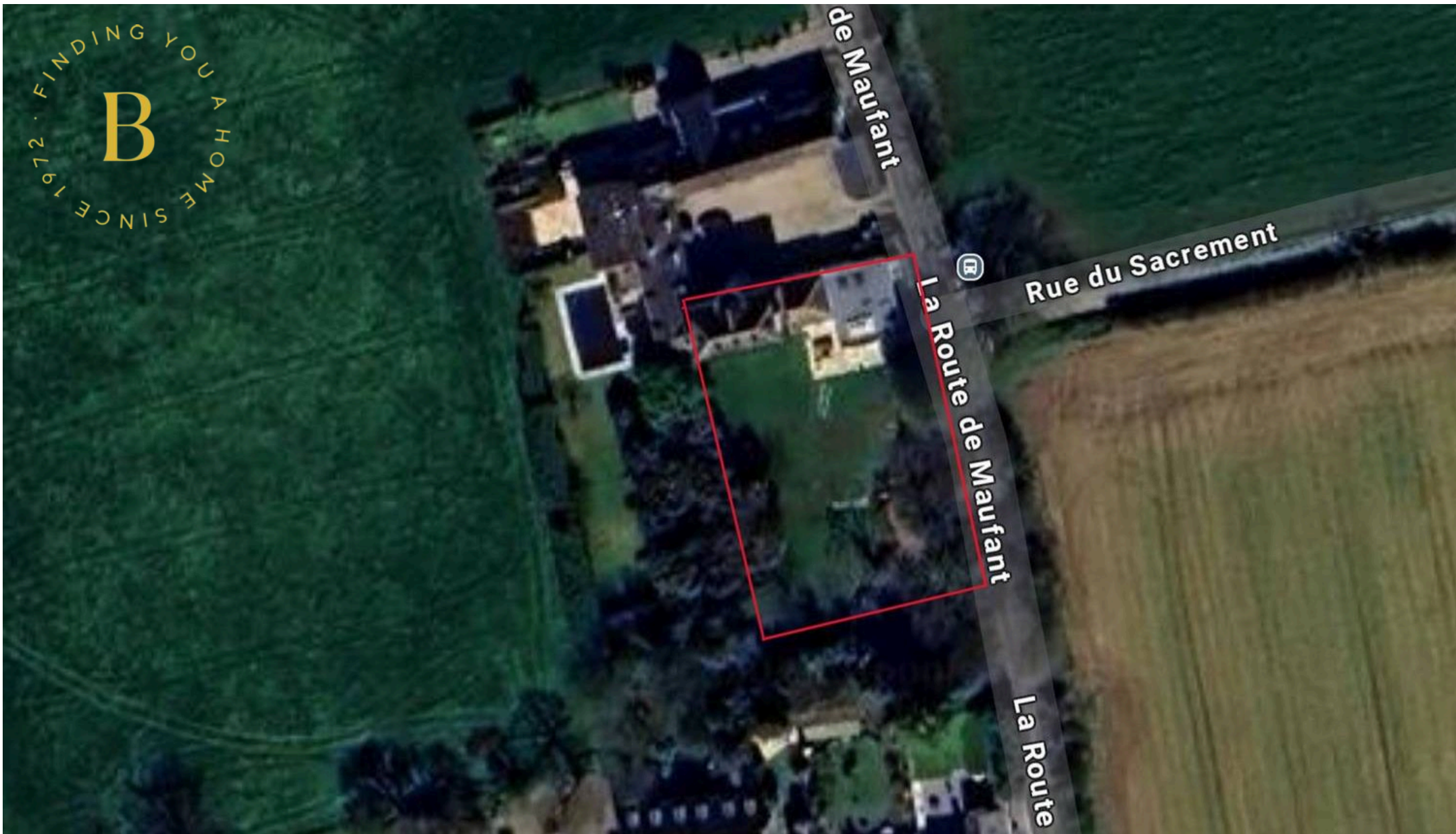


TOTAL FLOOR AREA : 2900sq.ft. (269.4 sq.m.) approx.

Whilst every attempt has been made to ensure the accuracy of the floorplan contained here, measurements of doors, windows, rooms and any other items are approximate and no responsibility is taken for any error, omission or mis-statement. This plan is for illustrative purposes only and should be used as such by any prospective purchaser. The services, systems and appliances shown have not been tested and no guarantee as to their operability or efficiency can be given.

Made with Metropix ©2025





## Broadlands

Broadlands Estates, Library Place - JE2 3NL

01534 880770 • [enquiries@broadlandsjersey.com](mailto:enquiries@broadlandsjersey.com) • [www.broadlandsjersey.com/](http://www.broadlandsjersey.com/)

# BROADLANDS

FINDING YOU A HOME SINCE 1972