

Snowdon Road, Eccles

Manchester



In Excess of £575,000

Snowdon Road

Eccles, Manchester

Incredible five bed semi-detached period house in Ellesmere Park. Grand entrance, spacious rooms, sleek kitchen, beautiful garden, close to amenities. Perfect family home in sought-after location. Council Tax band: D

Tenure: Freehold

- Stunning Period Property Laid over Four Fabulous Floors
- Located in the Desirable Ellesmere Park Area
- Family Lounge overlooking the Rear Garden & Formal Dining Space
- Fitted Kitchen and Dining Space with Integrated Appliances
- Five Generous Double Bedrooms Laid over the Upper Two Floors
- Three Piece Family Bathroom Suite & Additional Shower Room on Ground Floor
- Block Paved Driveway for Multiple Cars
- Beautifully Kept, Private Garden to the Rear Benefitting from the Sun
- The Perfect Family Home Located Close to Highly Sought After Schooling
- Surrounded by a Plethora of Amenities and Transport Links



HILLS



Entrance Hallway

Entered via a hardwood front door. Complete with a ceiling light point, wall mounted radiator and hardwood flooring.

Reception Room One

14' 6" x 13' 0" (4.42m x 3.96m)

Complete with a ceiling light point, two double glazed windows and wall mounted radiator. Fitted with carpet flooring.

Reception Room Two

14' 8" x 13' 2" (4.47m x 4.01m)

Featuring a gas fire. Complete with a ceiling light point, double glazed window, French doors and wall mounted radiator. Fitted with hardwood flooring.

Kitchen

12' 4" x 11' 3" (3.76m x 3.43m)

Featuring complementary wall and base units with gas hob, electric oven and stainless steel extractor. Integral dishwasher, and fridge freezer. Complete with a ceiling light point, wall mounted radiator, part tiled walls and tiled flooring.

Shower Room

9' 2" x 5' 7" (2.79m x 1.70m)

Featuring a three piece suite including a shower, hand wash basin and W.C. Plumbing for a washing machine. Complete with a ceiling light point, heated towel rail, part tiled walls and tiled flooring.

Rear Porch

5' 0" x 3' 4" (1.52m x 1.02m)

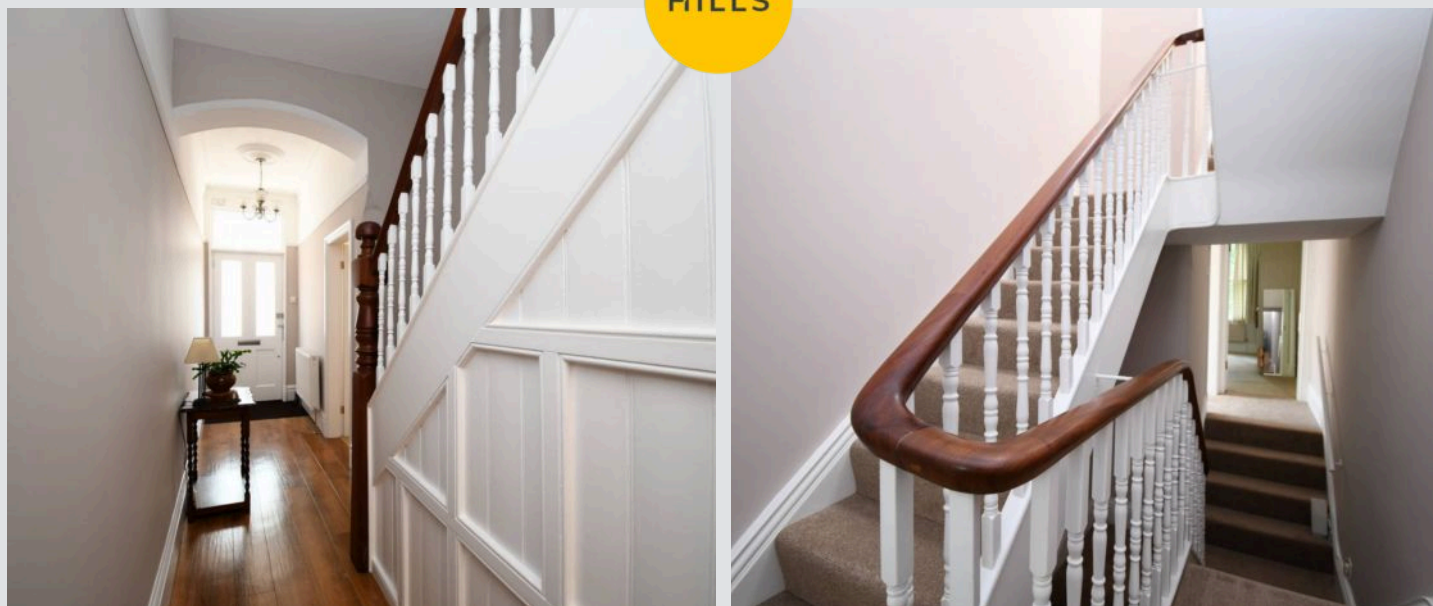
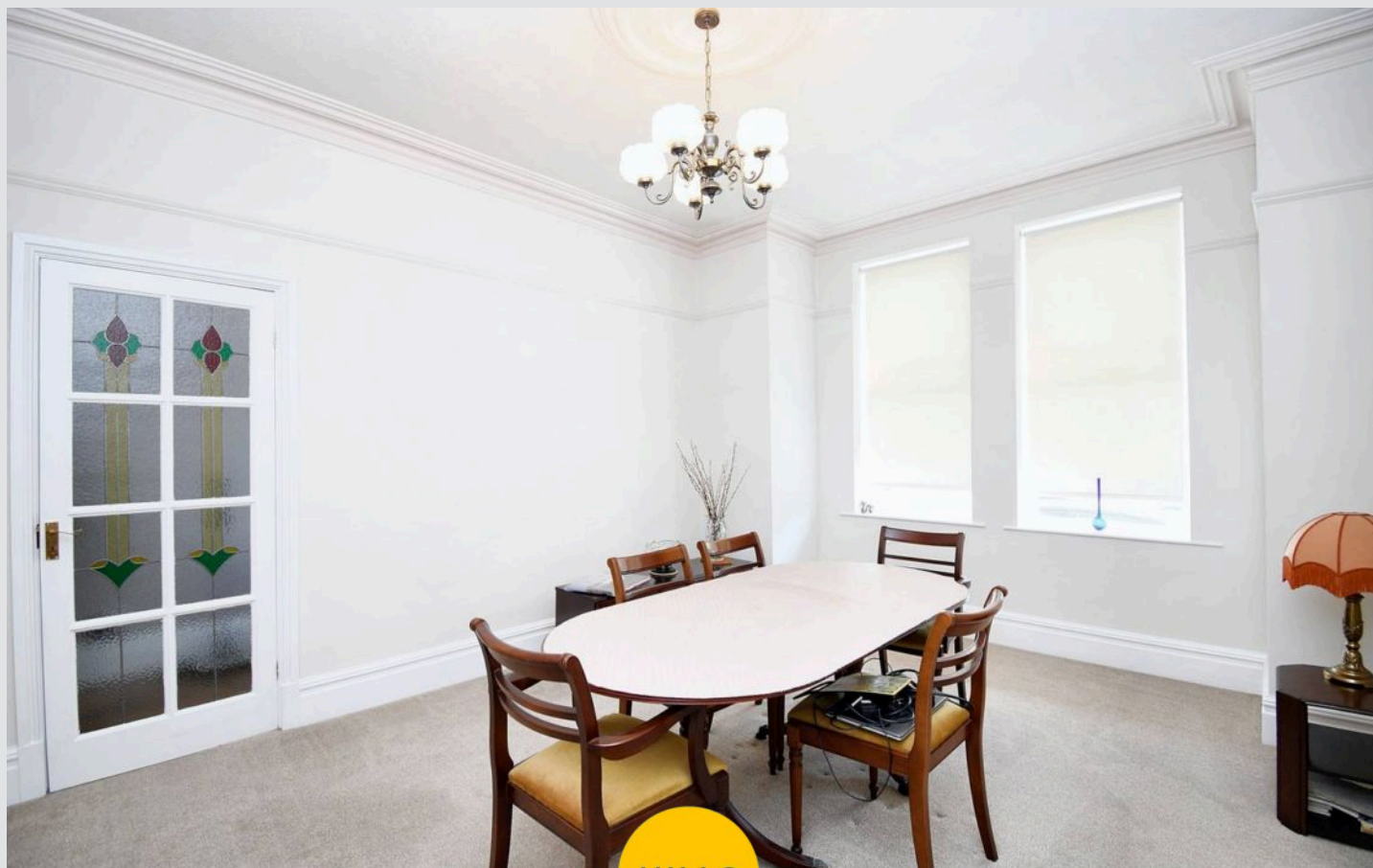
Cellar

Chamber One - 11'8" x 11'2"

Chamber Two - 14'5" x 12'6"

Chamber Three - 9'0" x 5'8"

Chamber Four - 5'2" x 3'6"6"



HILLS

Landing

Complete with a ceiling light point and carpet flooring.

Bedroom One

17' 8" x 12' 7" (5.38m x 3.84m)

Featuring a fire surround. Complete with a ceiling light point, two double glazed windows and wall mounted radiator. Fitted with carpet flooring.

Bedroom Two

12' 0" x 11' 4" (3.66m x 3.45m)

Complete with a ceiling light point, double glazed window and carpet flooring.

Bedroom Six

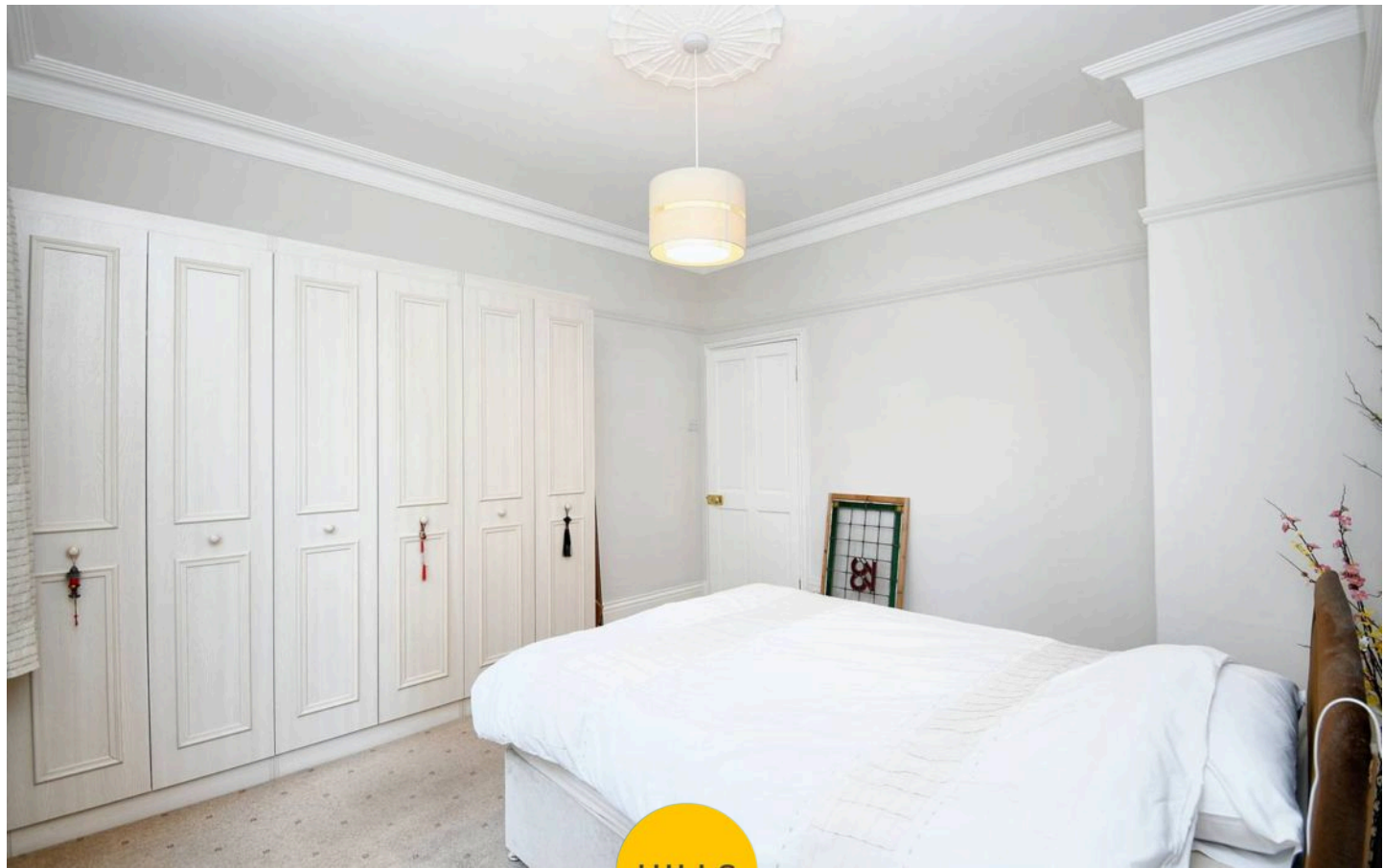
12' 8" x 12' 7" (3.86m x 3.84m)

Featuring fitted wardrobes. Complete with a ceiling light point, two double glazed windows and three wall mounted radiators. Fitted with carpet flooring.

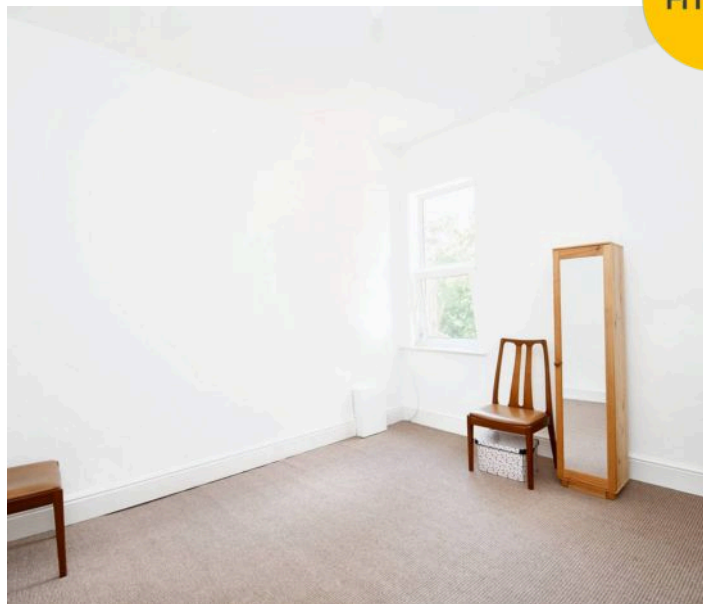
Bathroom

9' 0" x 7' 4" (2.74m x 2.24m)

Featuring a three piece suite including a bath with shower over, hand wash basin and W.C. Complete with ceiling spotlights, double glazed window and wall mounted radiator. Fitted with tiled walls and cushioned flooring.



HILLS



Landing

Complete with a ceiling light point and carpet flooring.

Bedroom Three / Office

12' 0" x 7' 5" (3.66m x 2.26m)

Complete with ceiling spotlights, two Velux windows, storage in the eaves and wall mounted radiator. Fitted with carpet flooring.

Bedroom Four

11' 5" x 11' 0" (3.48m x 3.35m)

Complete with a ceiling light point, Velux window and wall mounted radiator. Fitted with carpet flooring.

Bedroom Five

17' 8" x 12' 8" (5.38m x 3.86m)

Featuring fitted wardrobes. Complete with ceiling spotlights, double glazed window and wall mounted radiator. Fitted with carpet flooring.

W.C.

4' 6" x 4' 1" (1.37m x 1.24m)

Featuring a two piece suite including a hand wash basin and W.C. Complete with a wall light point, Velux window, storage in the eaves and wall mounted radiator. Fitted with part tiled walls and cushioned flooring.

External

To the front of the driveway is a block paved driveway. To the rear of the property is a garden featuring a lawn with planted borders, paved patio, gated access to rear field and side access.



HILLS





HILLS







Hills | Salfords Estate Agent

Hills Residential, Sentinel House Albert Street – M30 0SS

0161 707 4900

sales@hills.agency

www.hills.agency/



THE PROPERTY MISDESCRIPTIONS ACT 1991 The Agent has not tested any apparatus, equipment, fixtures and fittings or services and so cannot verify that they are in working order or fit for the purpose. A Buyer is advised to obtain verification from their Solicitor or Surveyor. References to the Tenure of a Property are based on information supplied by the Seller. The Agent has not had sight of the title documents. A Buyer is advised to obtain verification from their Solicitor. You are advised to check the availability of this property before travelling any distance to view. Every effort and precaution has been made to ensure these particulars are correct and not misleading but their accuracy is not guaranteed nor do they form part of any contract. If there is any point which is of particular importance to you, please contact us and we will provide any information you require. This is advisable, particularly if you intend to travel some distance to view the property. The mention of any appliances and services within these details does not imply that they are in full and efficient working order. These particulars are in draft form awaiting Vendors confirmation of their accuracy. These details must therefore be taken as a guide only.