



LENNOX GARDENS, SW1

Price
£120,000

An unmodernised one bedroom flat extending to 621 sq ft, with lift, on the second floor of a period building is held on a lease expiring on the 19th of September 2015. 2 Lennox Gardens entrance is on Walton Street, which the flat overlooks. The property is ideally located 200 yards from Harrods department store and all the excellent local amenities of Knightsbridge, Chelsea and South Kensington.

Details

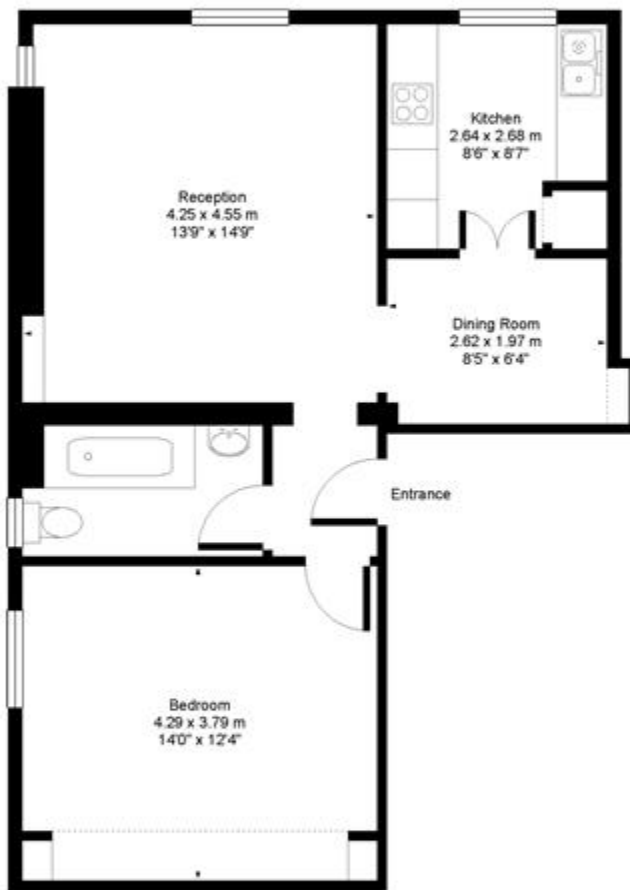
- L-shaped Reception Room
- Bedroom
- Bathroom/WC
- Kitchen
- Independent Heating/Hot Water
- Lift
- Resident Parking Permits Available



Lennox Gardens SW3



Approx. Gross Floor Area = 57 sq.meters • 621 sq.feet



SECOND FLOOR

For illustrative purposes only. Not to scale. Prepared by swan-photography.co.uk

Terms and Conditions

Tenure:	0 years
Ground Rent:	£250.00
Service Charge:	£4,285.20
Borough:	Kensington & Chelsea
Price:	£120,000

SUBJECT TO CONTRACT

VIEWING STRICTLY BY APPOINTMENT