







# 1 Low Leighton Road

New Mills, High Peak

**\*\*\*THREE DOUBLE BEDS\*\*\*** Stunning bay-fronted semi-detached house in New Mills village. Spacious with 3 reception rooms, large kitchen, 3 double beds, luxury bathroom, and private garden. Close to amenities and nature reserves. Perfect family home!  
Council Tax band: C

Tenure: Freehold

- Large Corner Plot
- Picturesque Rear Views
- Three Reception Rooms
- Driveway for 2 cars PLUS Detached Garage with Utility Room
- Convenient Location
- Three Double Bedrooms
- Large Bathroom and Shower Room
- Very spacious and airy

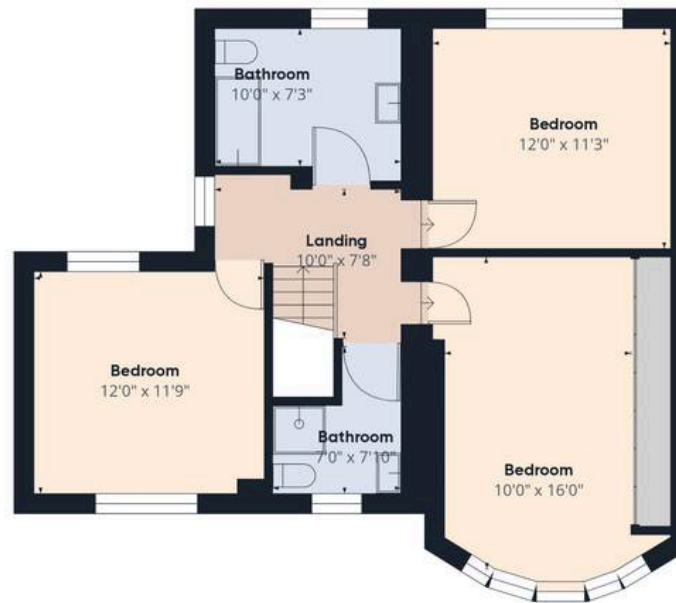








Floor 0 Building 1



Floor 1 Building 1



Floor 0 Building 2

Approximate total area<sup>(1)</sup>  
1689.4 ft<sup>2</sup>

(1) Excluding balconies and terraces

While every attempt has been made to ensure accuracy, all measurements are approximate, not to scale. This floor plan is for illustrative purposes only.

GIRAFFE360



AWARD WINNING ESTATE  
& LETTING AGENTS



SCAN THE QR CODE  
FOR MORE DETAILS  
OR BOOK A VIEWING

