

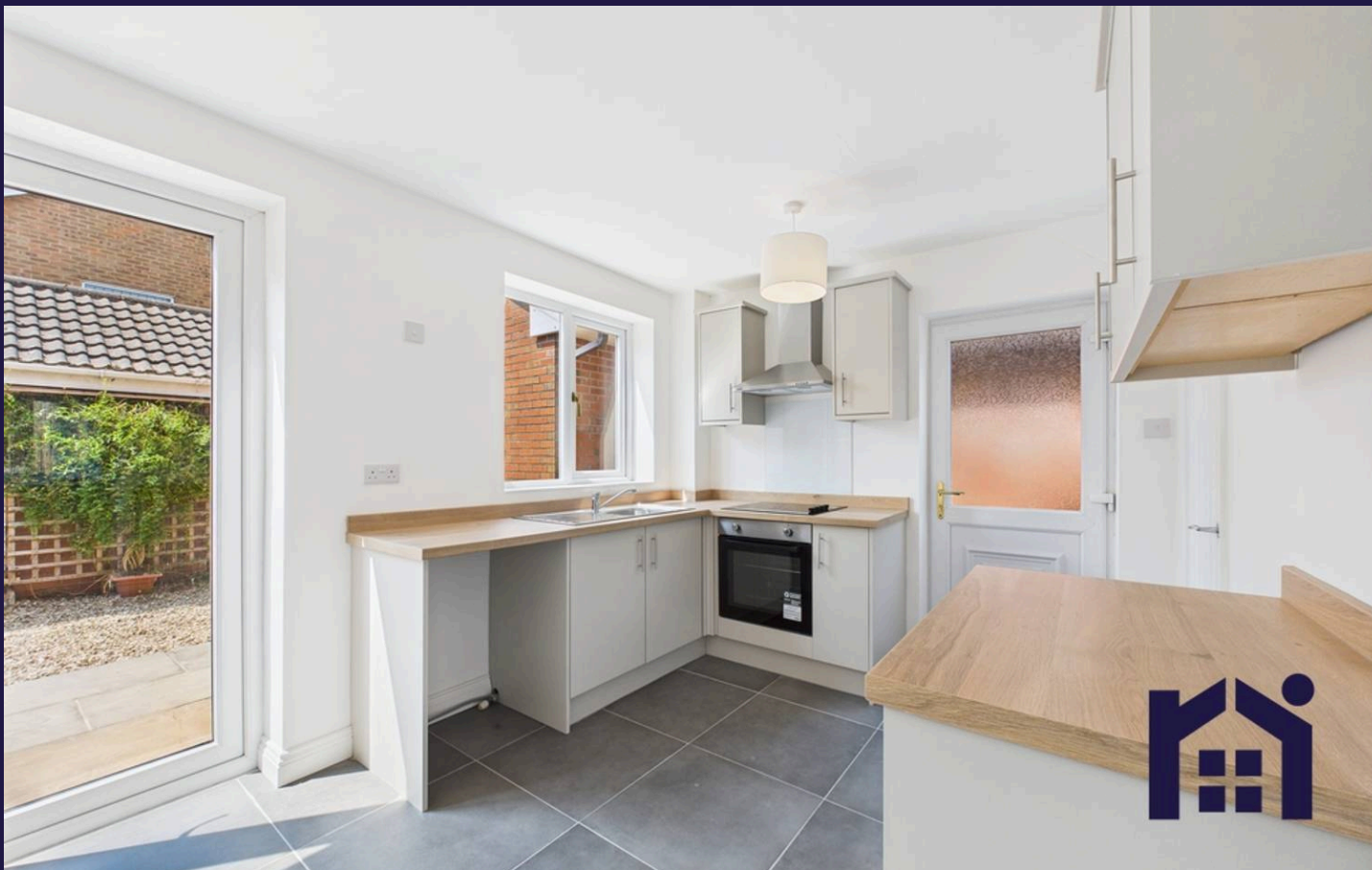
HOME  TRUTHS

The Green, Ecclestone

PR7 5TF

  
£1,095 pcm





Recently renovated three bedroom semi-detached property situated in the sought after village of Ecclestone and close to all local amenities including shops and schools. Available to let immediately.

Step through the entrance hall into the spacious lounge with bay fronted window. The newly fitted kitchen has a range of wall and base units including an electric oven and hob. There is space available for a fridge freezer and plumbing for a washing machine. The dining area has patio doors leading out to the garden.

Newly carpeted stairs lead to the first floor with two good sized double bedrooms and a comfortable single. The new bathroom comprises a panelled bath with mixer shower over, wash hand basin and wc.

The garden is low maintenance with patio area and planting pots. To the front, the property is set back from the road with a driveway for one car.



The property has been renovated with new kitchen and bathroom, new flooring, new boiler and neutrally decorated throughout. It is available now and requires a deposit of £1260 including holding deposit of £250.

Council Tax band: B

- Renovated property
- Three bedrooms
- New kitchen and bathroom
- Available now
- Village location
- Off road parking



HOME  TRUTHS

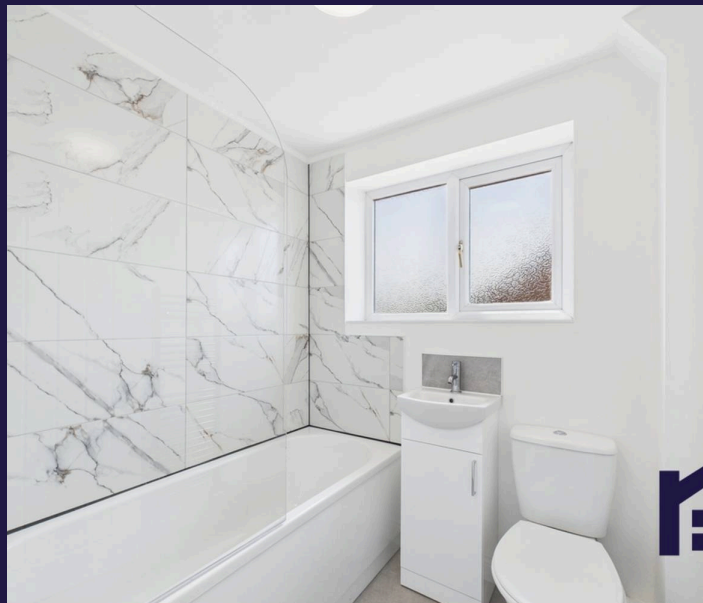
Eccleston Branch

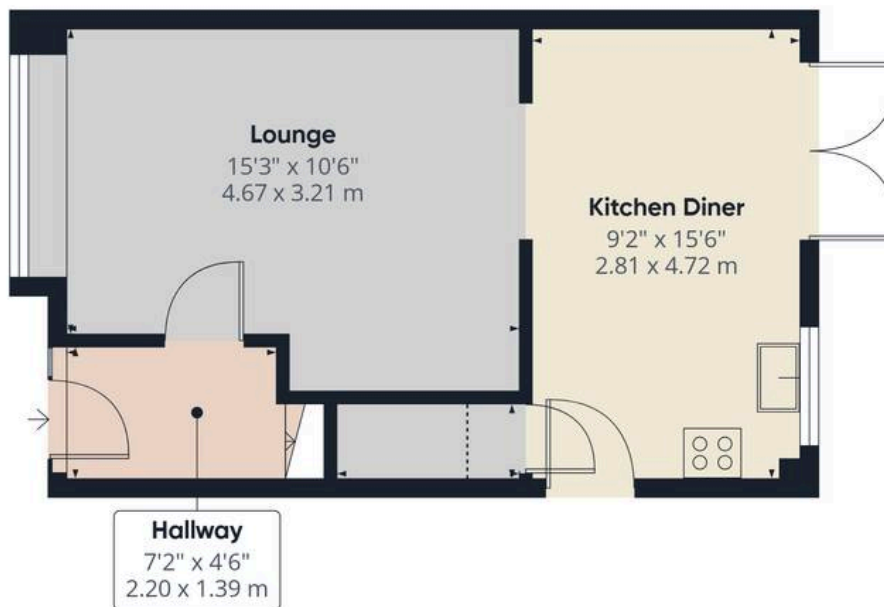
265 The Green, Eccleston, PR7 5TF  
01257 451673

Coppull Branch

244 Spendmore Lane, Coppull, PR7 5DE  
01257 794588

[www.hometruthslancs.co.uk](http://www.hometruthslancs.co.uk)  
[office@hometruthslancs.co.uk](mailto:office@hometruthslancs.co.uk)





Floor 1



Floor 2

**Approximate total area<sup>(1)</sup>**

724 ft<sup>2</sup>

67.5 m<sup>2</sup>

**Reduced headroom**

11 ft<sup>2</sup>

1.1 m<sup>2</sup>

(1) Excluding balconies and terraces

**Reduced headroom**

..... Below 5 ft/1.5 m

While every attempt has been made to ensure accuracy, all measurements are approximate, not to scale. This floor plan is for illustrative purposes only.

Calculations are based on RICS IPMS 3C standard.

GIRAFFE360